

I HEREBY CERTIFY THAT THIS DOCUMENT AND THE DATA CONTAINED HEREIN WAS PREPARED BY ME OR UNDER MY DIRECT SUPERVISION.

Ronald L. Carnell Sr. Aug. 15, 2005
RONALD L. CARNELL SR.
MN PLS NO. 43415

- LAND SURVEYOR
- PROFESSIONAL ENGINEER
- COUNTY SURVEYOR
- COUNTY ENGINEER

CERTIFICATE OF LOCATION OF GOVERNMENT CORNER

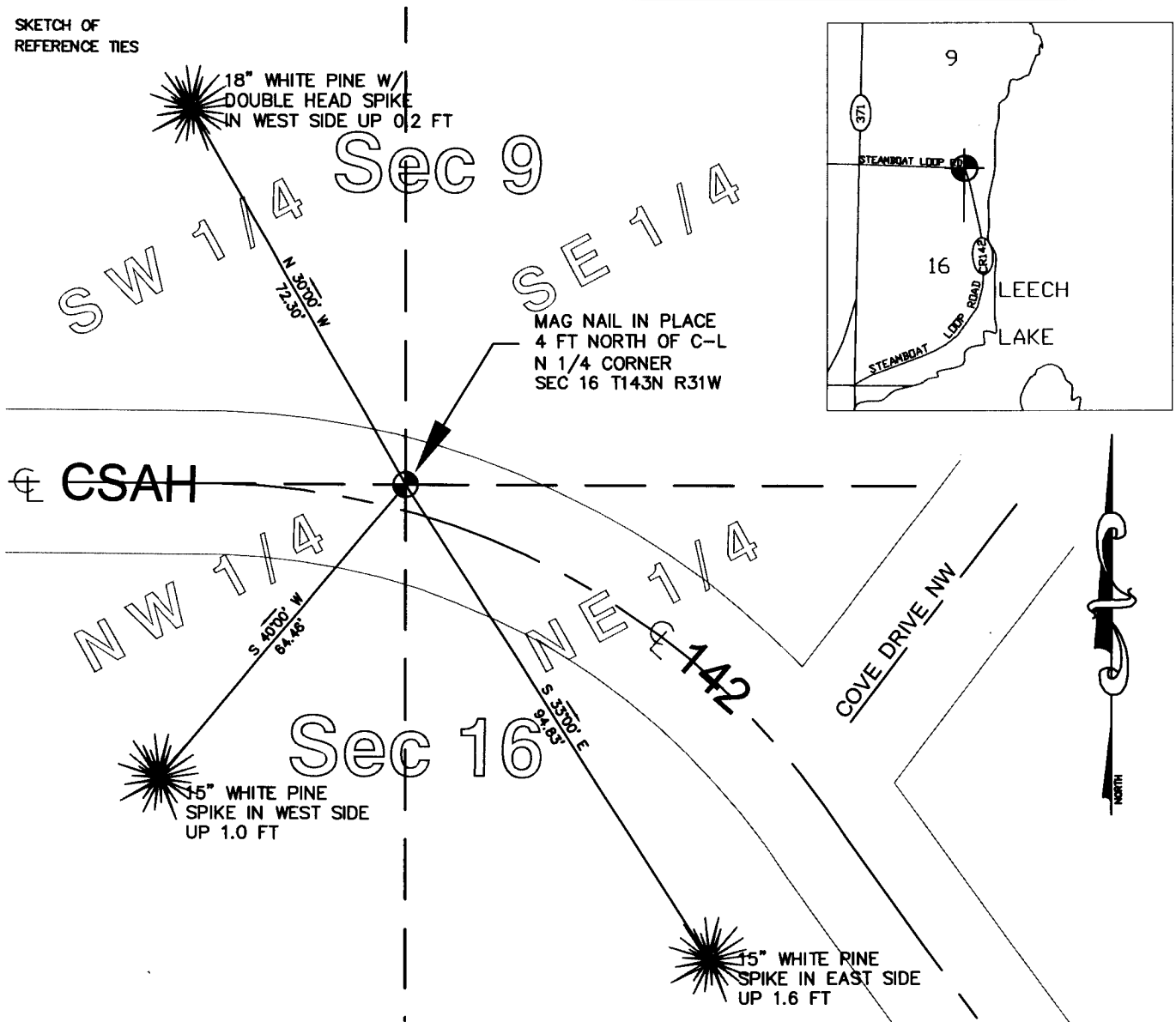
N 1/4 CORNER OF SECTION 16, TOWNSHIP 143N, RANGE 31 W, 5TH PRINCIPAL MERIDIAN

STATE OF MINNESOTA, COUNTY OF CASS

AT THE CORNER LOCATION SHOWN ON THE SKETCH:

ON JAN 19, 2005 FOUND A(N) MAG NAIL IN PLACE
 LEFT MONUMENT AS FOUND, LOWERED MONUMENT, REMOVED MONUMENT (EXPLAIN)
 ON _____, 2005 PLACED A(N) _____

SKETCH OF REFERENCE TIES



STATEMENT OF EVIDENCE RELATIVE TO THIS CORNER LOCATION IS ON BACK OF PAGE

Statement of Evidence

North Quarter Corner, Section 16, Township 143 North, Range 31 West

The original corner was established and monumented by the General Land Office in 1875 at a distance of 40.00 chains east of the Northwest corner of Section 16, Township 143 North, Range 31 West. The corner was tied into two bearing trees for future reference.

On May 24, 1976, the D.N.R. Engineering Bureau contacted the Cass County offices of Recorder, Auditor, Engineer, Surveyor and the Minnesota Department of Transportation.

In 1919, the GLO resurveyed the area and their field notes state as follows: Intersect the true point for the original ¼ Section corner which is marked by a galvanized iron pipe, 2 1/2", set by County Surveyor. North and alongside of local iron post, I set an iron post, 36"x1", with brass cap marked, from which the remains of the original bearing trees exist. Two new bearing trees were tied for future reference.

On January 19, 2005 Emmons and Olivier Resources located the corner northerly of the centerline of County Road No. 142. The brass cap was missing. After analysis of all information the corner was accepted as marking the location.

A000509699

OFFICE OF COUNTY RECORDER
CASS COUNTY MINNESOTA

CERTIFIED, FILED, AND/OR
RECORDED ON

02/08/2006 11:46:38AM

AS DOC #: A000509699

PAGES: 2

REC FEES: \$0.00

KATHRYN M. NORBY
COUNTY RECORDER

BY Kathryn M. Norby
DEPUTY