

I HEREBY CERTIFY THAT THIS DOCUMENT AND THE DATA CONTAINED HEREIN WAS PREPARED BY ME OR UNDER MY DIRECT SUPERVISION.

Ronald L. Carnell Sr. Aug 15, 2005

RONALD L. CARNELL SR.

MN PLS NO. 43415

LAND SURVEYOR

PROFESSIONAL ENGINEER

COUNTY SURVEYOR

COUNTY ENGINEER

CERTIFICATE OF LOCATION OF GOVERNMENT CORNER

E 1/4 CORNER OF SECTION 17, TOWNSHIP 143N, RANGE 31 W, 5TH PRINCIPAL MERIDIAN

STATE OF MINNESOTA, COUNTY OF CASS

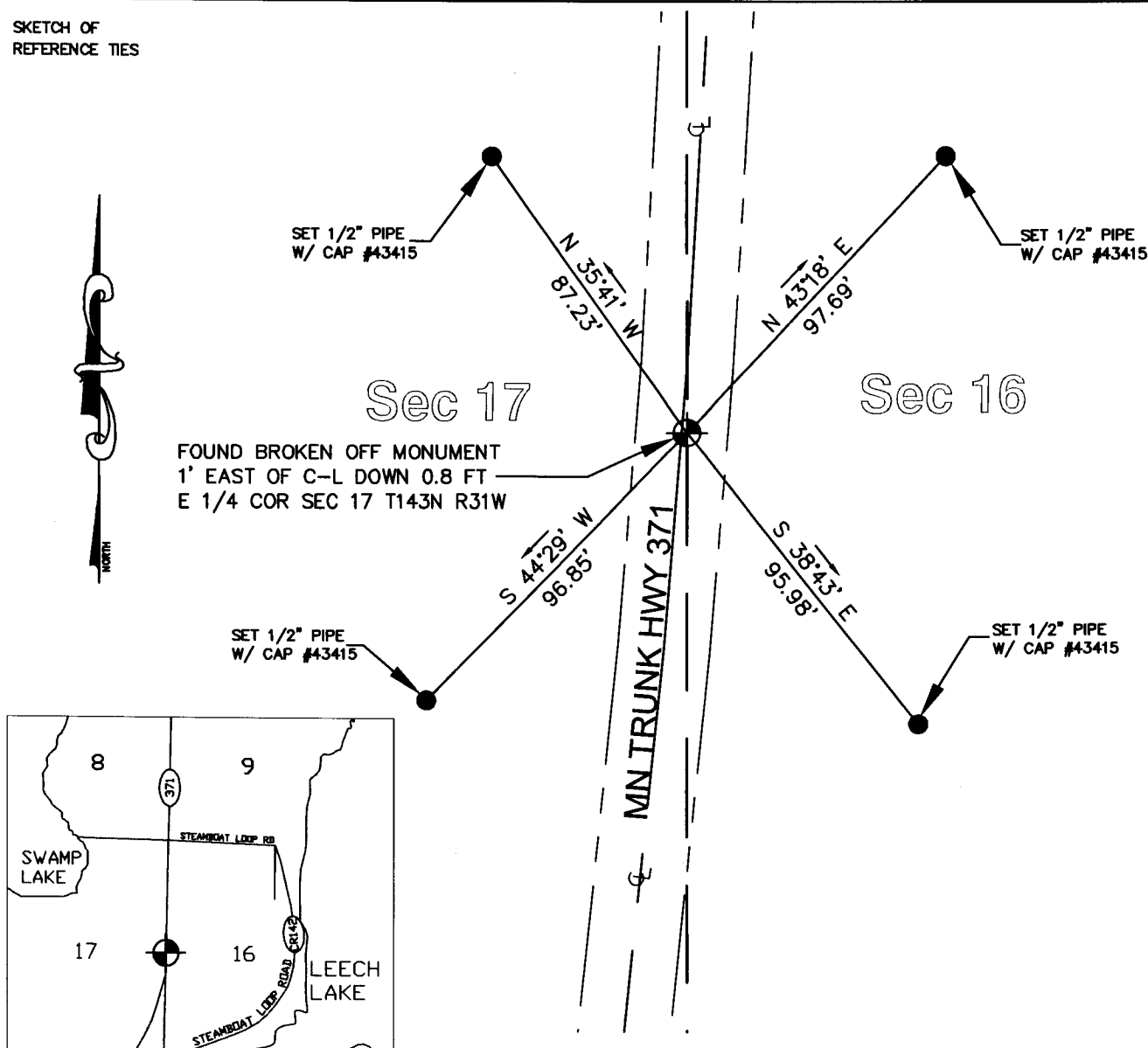
AT THE CORNER LOCATION SHOWN ON THE SKETCH:

ON JAN 20, 2005 FOUND A(N) MONUMENT W/ BROKEN TOP

LEFT MONUMENT AS FOUND, LOWERED MONUMENT, REMOVED MONUMENT (EXPLAIN)

ON _____, 2005 PLACED A(N) _____

SKETCH OF
REFERENCE TIES



STATEMENT OF EVIDENCE RELATIVE TO THIS CORNER LOCATION IS ON BACK OF PAGE

Statement of Evidence

East Quarter Corner Section 17, Township 143 North, Range 31 West

The original corner was established and monumented by the General Land Office in 1879 at a distance midway between Section corners 80.00 chains apart. The corner was tied into two bearing trees for future reference.

On May 24, 1976, the D.N.R. Engineering Bureau contacted Cass County offices of Recorder, Auditor, Engineer, Surveyor and the Minnesota Department of Transportation.

In 1919, The G.L.O. resurveyed the area but no evidence of the original corner or bearing trees could be found so the corner was set using lost methods between section corners 78.97 chains apart. The corner was tied into two bearing trees for future reference.

The November 27, 1931 field survey notes for Minn. #371 describe the corner as follows: 1" pipe on east shoulder of road-bent-brass cap possibly knocked off.

In May, 1976, the D.N.R. could find no evidence of the iron pipe. On May 26, 1977, the D.N.R. set a County cast iron monument as shown and described on this certificate. The corner was set by prolongation North along a line between the Southeast corner and the S1/16th corner between Sections 16 and 17. Said corners are brass capped G.L.O. monuments 1301.67 feet apart. The Quarter corner was set 1301.67 feet north of the 1/16th corner.

On January 20 Emmons and Olivier Resources Located the corner described above. The corner appear to have been a broken off cast iron monument. After analysis of all survey information the corner was accepted as marking the location.

A000509697

OFFICE OF COUNTY RECORDER
CASS COUNTY MINNESOTA

CERTIFIED, FILED, AND/OR
RECORDED ON
02/08/2006 11:46:36AM

AS DOC #: A000509697
PAGES: 2
REC FEES: \$0.00

KATHRYN M. NORBY
COUNTY RECORDER

BY Kathryn M. Norby
+V DEPUTY