

A000509694

OFFICE OF COUNTY RECORDER
CASS COUNTY MINNESOTA

CERTIFIED, FILED, AND/OR
RECORDED ON
02/08/2006 11:46:33AM

AS DOC #: A000509694
PAGES: 3
REC FEES: \$0.00

KATHRYN M. NORBY
COUNTY RECORDER

BY *Kathryn Norby* DEPUTY

CERTIFICATE OF LOCATION OF GOVERNMENT CORNER

Northeast Corner of Section 1, Township 137, Range 30

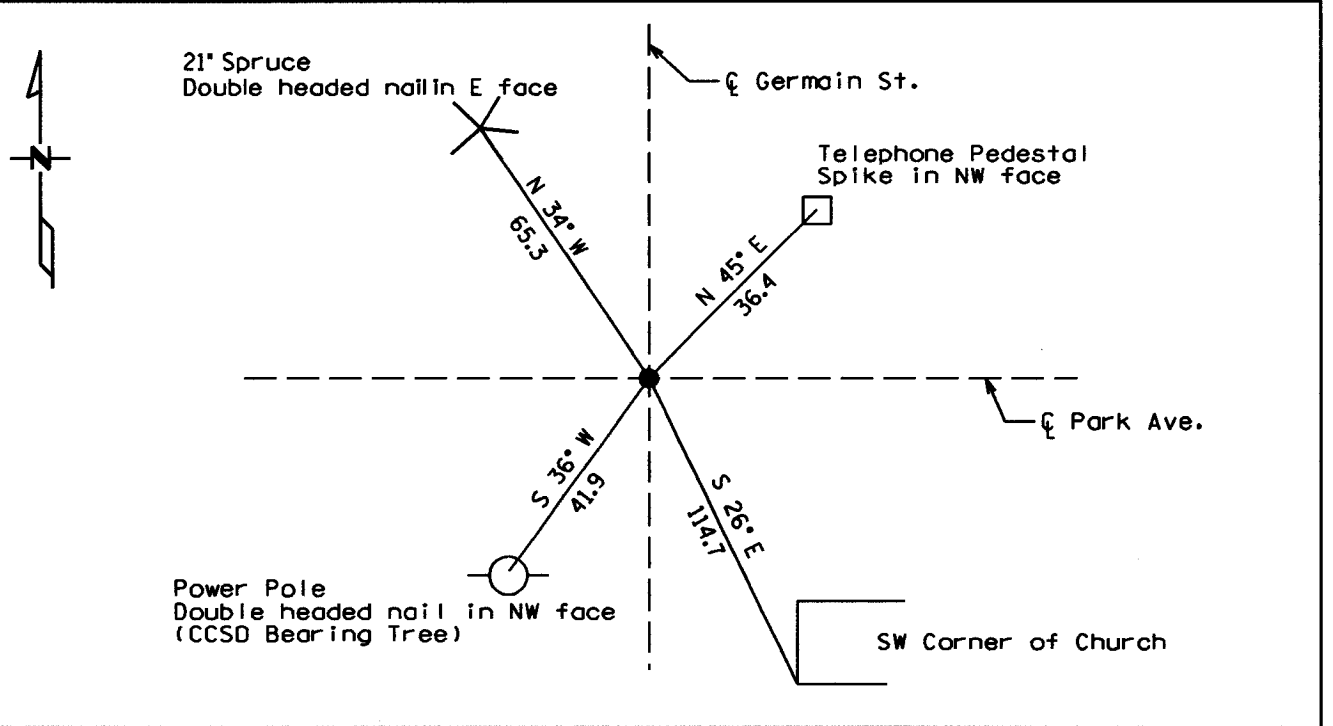
West Principal Meridian, State of Minnesota, County of Cass

At the corner location shown on the sketch:

On 3/24/05 found a Iron pipe monument capped RLS 17008
DATE

left monument as found lowered monument removed monument (explain)

On _____ placed a _____
DATE



Statement of evidence for this corner location is on back of this page.

I hereby certify that this document was researched and prepared by me or under my direct supervision.

Signature: *[Signature]* Date: 7/28/05 License No. 42619

Title: Land Surveyor Professional Engineer County Surveyor County Engineer

Statement of Evidence:

Northeast Corner Section 1, Township 137 North, Range 30 West

The Original Public Land Survey was run in 1865 and a wood post was set to mark the corner. Bearing tree ties were made to four Norway Pines.

In 1900 Mr. James Canfield shows a monument in the Original Plat of Pine River.

In 1909 Mr. John Curo set a 1" iron pipe monument. Bearing tree ties were made to two stumps, a root of an old bearing tree, and an Oak tree.

In 1910 Mr. John Curo recovered the 1" iron pipe monument set in 1909.

In 1913 Mr. John Curo show a monument in the Sixth Addition to Pine River.

In 1914 Co. Ditch Survey Bk 22, Box 3 of Co. Ditch Survey Books, Page 63.

In 1915 Mr. John Curo recovered an iron pipe monument.

In 1920 Mr. C.J. White shows a monument in Urton's 1st Addition to Pine River.

In 1920 Mr. C.J. White shows a monument in Urton's 2nd Addition to Pine River.

In 1924 the State Highway Department recovered an iron pipe monument.

In 1941 Mr. John Curo recovered an iron pipe monument and made bearing tree ties to two Jack Pines, a Poplar, and a 2" iron pipe.

In 1946 Mr. John Howard shows a monument in Lindbergs Addition to Pine River.

In 1947 The County Highway Department recovered an iron pipe monument. Bearing tree ties were made to a Cottonwood, a Power Pole and an Iron Monument.

In 1950 Mr. Harold Curo recovered an iron pipe monument. Bearing tree ties were made to a 2" pipe, a Poplar, a Telephone Pole, and a Willow.

In 1955 The County Highway Department recovered the monument.

In 1961 the Department of Natural Resources recovered an iron pipe monument.

In 1984 Mr. Terry Freeman recovered an iron pipe monument. Bearing Tree ties were made to a Box Elder, a Telephone Pole, a Cottonwood and a Power Pole.

In 1999 The Cass County Surveyors Office recovered an iron pipe monument. Bearing Tree ties were made to a Telephone Pedestal post, a Spruce, a Power Pole and a Southwest Cor. Fnd.

In 2005 Kramer Leas DeLeo recovered an iron pipe monument capped RLS 17008 and made bearing tree ties to a Spruce, a Telephone Pedestal, a Power Pole and the Southwest Corner of a Church. Kramer Leas DeLeo accepts this position as the correct location for the corner.

For details and survey analysis contact Kramer Leas DeLeo in Baxter, Minnesota.