

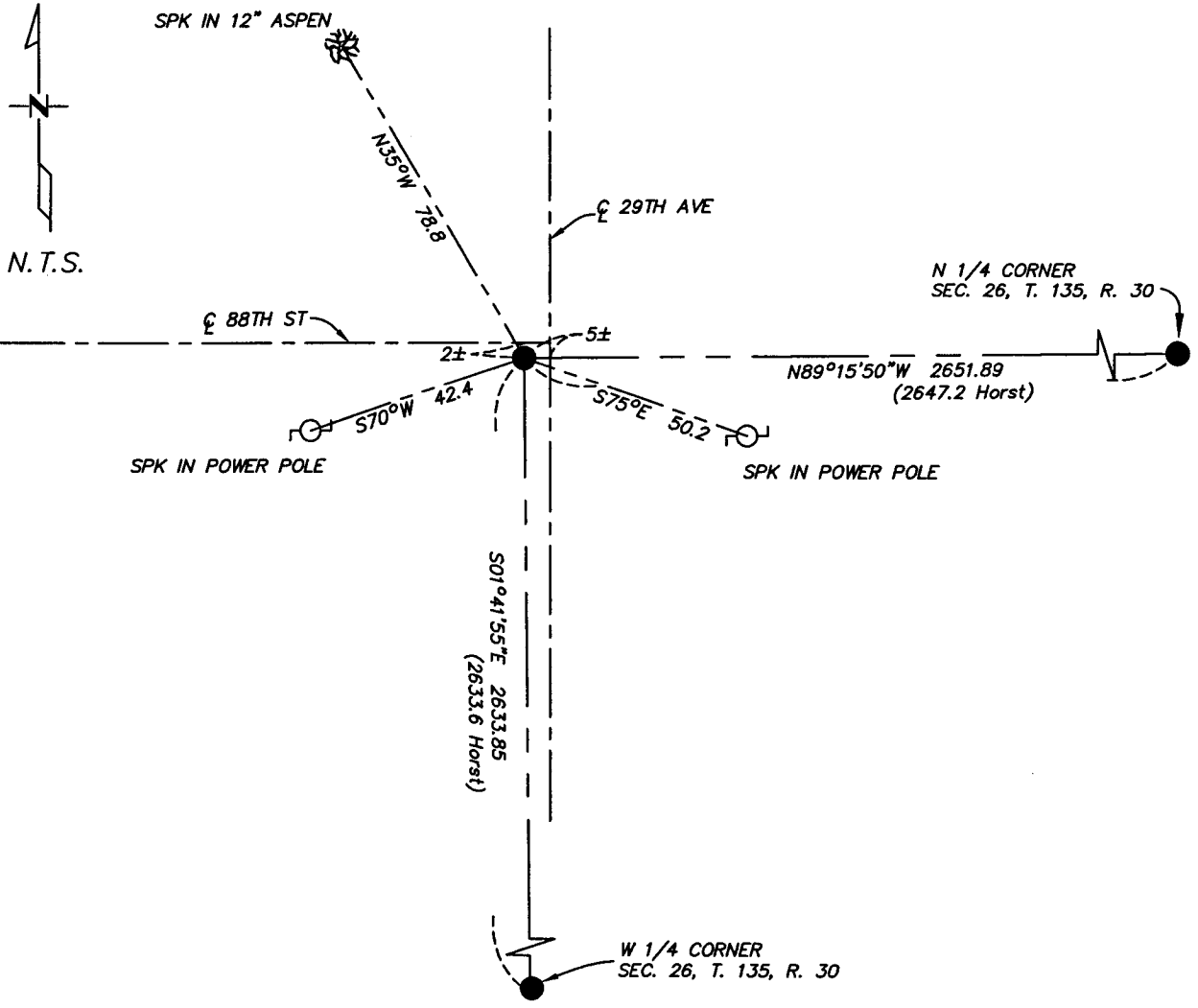
# CERTIFICATE OF LOCATION OF GOVERNMENT CORNER

Northeast Corner \_\_\_\_\_ Corner of Section 27 , Township 135 , Range 30  
5TH Principal Meridian, State of Minnesota, County of Cass

At the corner location shown on the sketch:

- On 9/12/05 found a 1/2" iron pipe capped RLS 42630  
DATE
- left monument as found     lowered monument     removed monument (explain)
- On \_\_\_\_\_ placed a \_\_\_\_\_  
DATE

## SKETCH OF REFERENCE TIES



Statement of evidence relative to this corner location is on back of page.

I hereby certify that this document and the data contained herein was prepared by me or under my direct supervision.

Bruce Linn      9/26/05  
SIGNATURE      DATE

Registration No. 17253

- Land Surveyor     Professional Engineer
- County Surveyor     County Engineer

OFFICE OF THE COUNTY RECORDER  
County of \_\_\_\_\_

I hereby certify that this document was filed in the Co. Recorders office at \_\_\_\_\_ M. on the \_\_\_\_\_ day of \_\_\_\_\_ A.D., 20\_\_\_\_

County Recorder \_\_\_\_\_  
By \_\_\_\_\_, Deputy

DOCUMENT NO. \_\_\_\_\_

Statement of Evidence

Northeast Quarter, Section 27, T. 135N. R. 30W., 5th P.M.

1869 – Wood post set for corner

1921 – E.B. Horst set 2"x48" iron monument. County Resurvey "E-33". Book "C", page 412.

1925 – Schultz found 2" pipe in road, County Book "D", page 167

2005 – Westwood Professional Services, Inc. finds 1/2" pipe capped RLS 42630 set by Randy Quale for subdivision of Section 22, T135, R30. The ties to which are shown on the face of this certificate.

A000509689  
OFFICE OF COUNTY RECORDER  
CASS COUNTY MINNESOTA  
CERTIFIED, FILED, AND/OR  
RECORDED ON  
02/08/2006 11:46:28AM

AS DOC #: A000509689  
PAGES: 2  
REC FEES: \$0.00

KATHRYN M. NORBY  
COUNTY RECORDER  
BY Kathryn Norby DEPUTY  
HV