

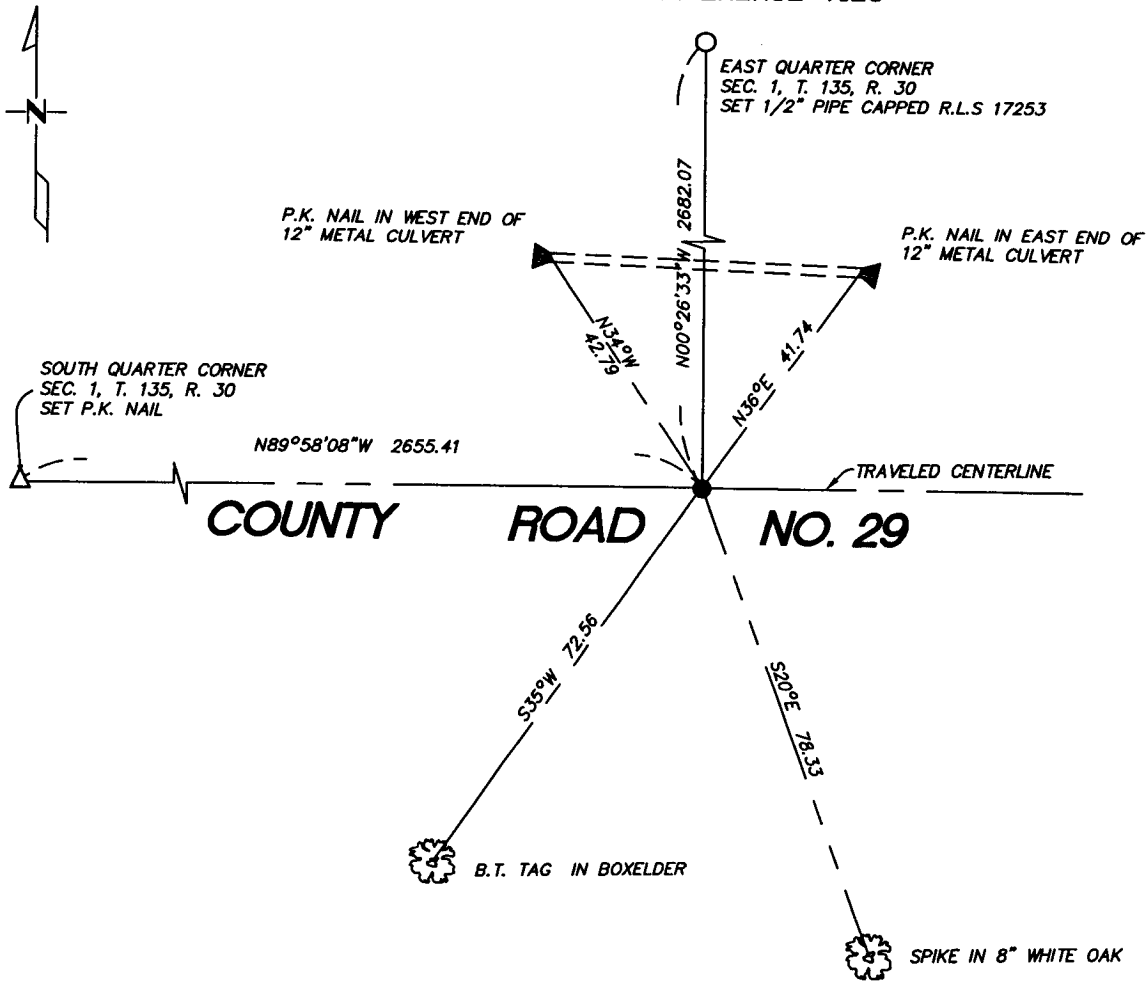
CERTIFICATE OF LOCATION OF GOVERNMENT CORNER

Northeast _____ Corner of Section 12 , Township 135 , Range 30
5TH Principal Meridian, State of Minnesota, County of _____ Cass _____

At the corner location shown on the sketch:

- On 10-26-04 found a 2" Pipe with cap
DATE
- left monument as found lowered monument removed monument (explain)
- On _____ placed a _____
DATE

SKETCH OF REFERENCE TIES



Statement of evidence relative to this corner location is on back of page.

I hereby certify that this document and the data contained herein was prepared by me or under my direct supervision.

Bruce Linn 11/10/06
SIGNATURE DATE

Registration No. 17253

- Land Surveyor Professional Engineer
- County Surveyor County Engineer

OFFICE OF THE COUNTY RECORDER
 County of _____

I hereby certify that this document was filed in the Co. Recorders office at ____ M. on the ____ day of _____ A.D., 20__

County Recorder _____
 By _____, Deputy

DOCUMENT NO. _____

Statement of Evidence:

Northeast corner Section 12, T. 135, R. 30.

- 1858 - Original Gov't Survey set post.
- 1916 - John Curo (County Book B p. 369-376 also on microfilm-roll 105 Bk 56 pg 26, 28, and 31), finds stone set by Hallet and sets a 2' x 48' galvanized pipe.
- 1971 - Cass County Highway Department finds 2' Iron monument in place.
- 2000 - C.C.S.D. finds 2' Iron monument in place.
- 2000 - C.C.S.D. sets a mag nail from ties after road construction.
- 2003 - Landecker and Associates Inc. Sketch shows monument found.
- 2004 - Westwood Professional Services, Inc. finds a 2' pipe with cap and verifies previous ties as shown on the face of this certificate.

A000509679

OFFICE OF COUNTY RECORDER
CASS COUNTY MINNESOTA

CERTIFIED, FILED, AND/OR
RECORDED ON
02/08/2006 11:46:18AM

AS DOC #: A000509679
PAGES: 2
REC FEES: \$0.00

KATHRYN M. NORBY
COUNTY RECORDER

BY Kathryn M. Norby
DEPUTY