

A000509672

OFFICE OF COUNTY RECORDER  
CASS COUNTY MINNESOTA

CERTIFIED, FILED, AND/OR  
RECORDED ON  
02/08/2006 11:46:11AM

AS DOC #: A000509672  
PAGES: 2  
REC FEES: \$0.00

KATHRYN M. NORBY  
COUNTY RECORDER

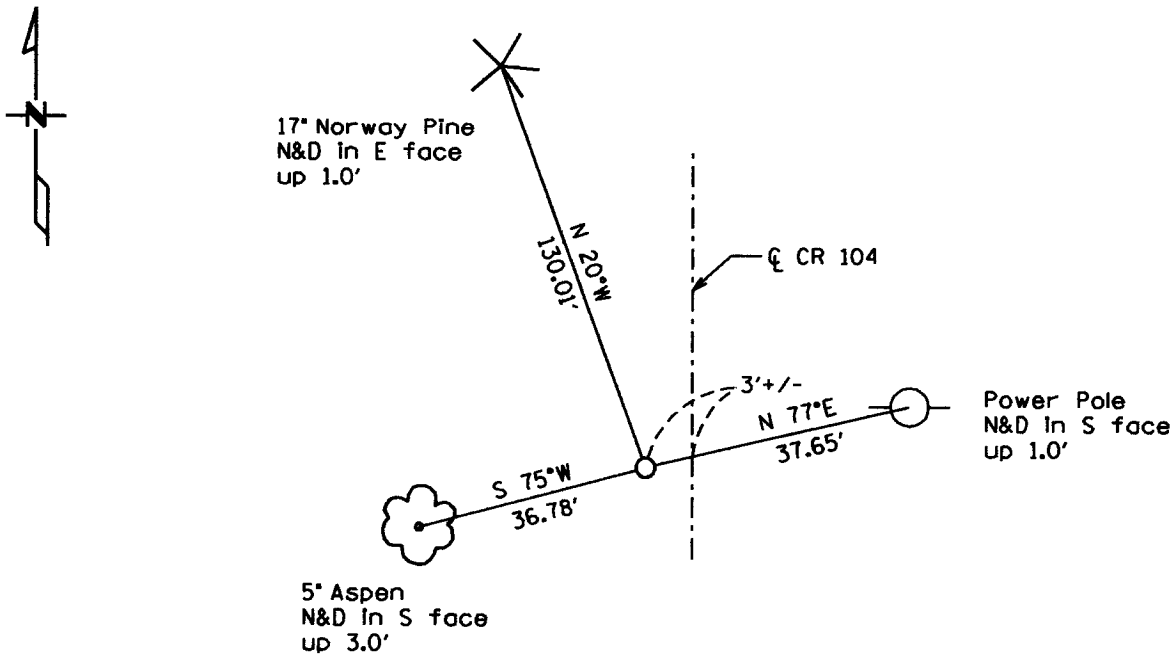
BY Kathryn M. Norby DEPUTY

# CERTIFICATE OF LOCATION OF GOVERNMENT CORNER

East Quarter Corner of Section 23, Township 134, Range 31  
West Principal Meridian, State of Minnesota, County of Cass

At the corner location shown on the sketch:

- On \_\_\_\_\_ found a \_\_\_\_\_  
DATE
- left monument as found     lowered monument     removed monument (explain)
- On 12/14/05 placed a 1/2" iron pipe monument capped RLS 42619  
DATE



Statement of evidence for this corner location is on back of this page.

I hereby certify that this document was researched and prepared by me or under my direct supervision.

Signature Jessie M. Lear Date 12/15/05 License No. 42619  
 Titles:  Land Surveyor     Professional Engineer     County Surveyor     County Engineer

**Statement of Evidence:**

**East Quarter Corner Section 23, Township 134 North, Range 31 West**

**The Original Public Land Survey was run in 1869 and a wood post was set to mark the corner. Bearing tree ties were made to two pine trees.**

**In 2005 Kramer Leas DeLeo searched for corner evidence and found nothing. The corner position was computed lost and a ½" iron pipe monument capped RLS 42619 was set. Bearing tree ties were made to a Norway Pine, an Aspen, and a Power Pole. Kramer Leas DeLeo accepts this position as the correct location for the corner.**

**For details and survey analysis contact Kramer Leas DeLeo in Brainerd, Minnesota.**