

CERTIFICATE OF LOCATION OF GOVERNMENT CORNER

I hereby certify that this survey, plan, or report was prepared by me or under my direct supervision and that I am a duly Licensed Land Surveyor under the laws of the State of Minnesota.

Terry L. Freeman
 TERRY L. FREEMAN

Date: 4/21/05 License No: 21367

OFFICE OF THE COUNTY RECORDER
 County of CASS

I hereby certify that this document was filed in the Office of the County Recorder at _____ o'clock _____ M. on the _____ day of _____, 20____ A.D.

County Recorder _____

By: _____, Deputy
 DOCUMENT NO. _____

EAST QUARTER Corner of Section 21, Township 140, Range 26, 5TH P.M.

On 4/12/15 found a 2 1/2 INCH IRON PIPE ±9 INCHES ABOVE GROUND

left monument as found, lowered monument, removed monument (explain)

On _____ placed a _____

decl: 5° EAST (ASSUMED)

SKETCH OF REFERENCE TIES

INDEX NO. P-13

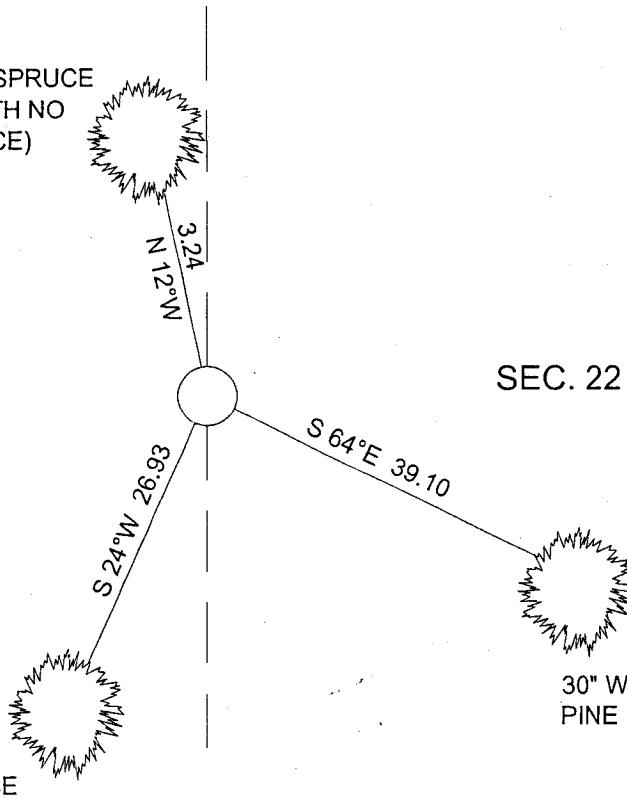
Not to Scale



12" SPRUCE
 (EXISTIN B.T. TAG WITH NO
 BEARING OR DISTANCE)

SEC. 21

SEC. 22



ALL DISTANCES ARE HORIZONTAL
 TO NAIL IN BASE OF BEARING TREE.

Statement of evidence for this corner position is on the back of this page

STATEMENT OF EVIDENCE

Index No. P - 13

East Quarter Corner, Section 21, Township 140 North,
Range 26 West, Cass County, Minnesota.

- 1871 William P. Allen and Edgar P. Putnam, U.S. Deputy Surveyors, originally established this corner position while surveying the interior and subdivision lines of Township 140 North, Range 26 West. A wood post was set for the corner position with the following witnesses: A 6 inch Fir, South 80 degrees West, 12 links; A 6 inch Birch, North 84 degrees East, 17 links.
- 1950 Harold Curo, RLS#3417, found a 2 inch by 48 inch galvanized iron pipe with cap and accepts it as the Quarter Corner position on record at Cass County Surveyor's office, County Book "D", pp. 358-359, Survey Record No. 626.
- 1973 R.F. Schneider, RLS#5740, found a 2 ½ inch iron pipe and accepts it as the Quarter Corner position on record at Landecker and Associates, Inc. Walker Office, field book No. 29, p. 58.
- 1992 A Landecker and Associates, Inc. survey crew found the 2 ½ inch iron pipe used by Schneider and accepts it as the Quarter Corner position.
- 2002 Wallace Buckler, RLS#9672, Certificate of Survey on file in the Cass County Surveyors Office shows a monument found.
- 2005 A Landecker and Associates, Inc. survey crew found the 2 ½ inch iron pipe monument ±9 inches above ground and accepts it as the Quarter Corner position. The following accessories were established: A 30 inch White Pine, South 64 degrees East, 39.10 feet; A 12 inch Spruce, South 24 degrees West, 26.93 feet; A 12 inch Spruce, North 12 degrees West, 3.24 feet.

A000503534

**OFFICE OF COUNTY RECORDER
CASS COUNTY MINNESOTA**

**CERTIFIED, FILED, AND/OR
RECORDED ON
09/09/2005 10:52:21AM**

**AS DOC #: A000503534
PAGES: 2
REC FEES: \$0.00**

**KATHRYN M. NORBY
COUNTY RECORDER**

BY Kathryn M. Norby **DEPUTY**