

A000497242

OFFICE OF COUNTY RECORDER  
CASS COUNTY MINNESOTA

CERTIFIED, FILED, AND/OR  
RECORDED ON  
04/15/2005 12:29:09PM

AS DOC #: A000497242  
PAGES: 2  
REC FEES: \$0.00

KATHRYN M. NORBY  
COUNTY RECORDER

BY Kathryn M. Norby <sup>DEPUTY</sup>

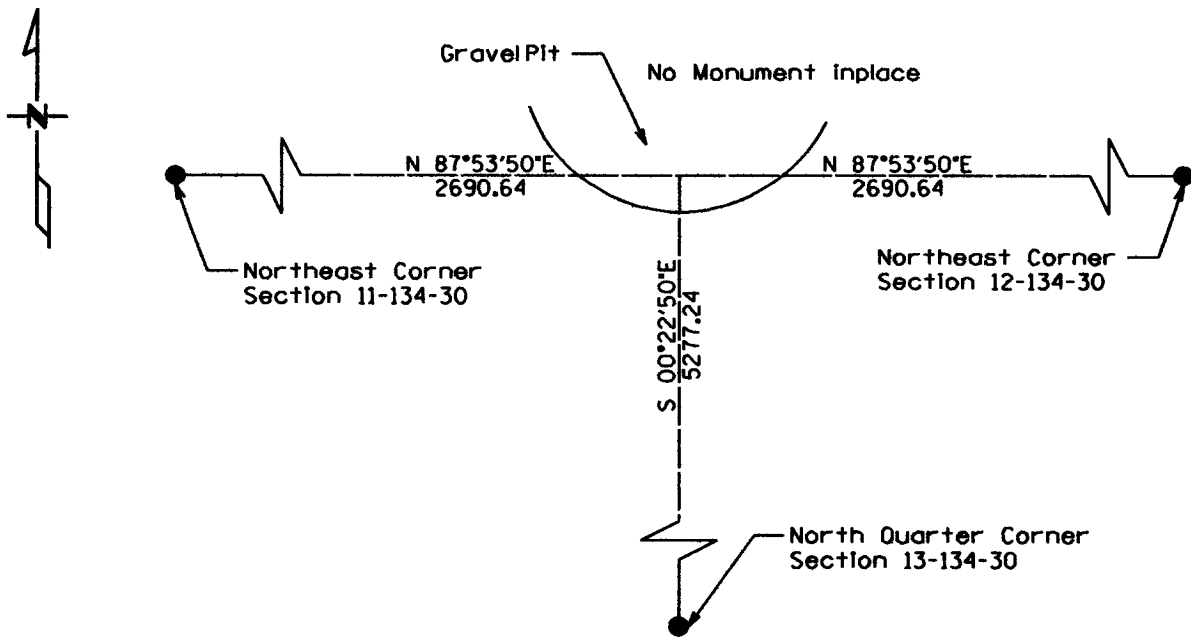
# CERTIFICATE OF LOCATION OF GOVERNMENT CORNER

North Quarter Corner of Section 12, Township 134, Range 30

West Principal Meridian, State of Minnesota, County of Cass

At the corner location shown on the sketch:

- On \_\_\_\_\_ found a \_\_\_\_\_  
DATE
- left monument as found     lowered monument     removed monument (explain)
- On \_\_\_\_\_ placed a \_\_\_\_\_  
DATE



Statement of evidence for this corner location is on back of this page.

I hereby certify that this document was researched and prepared by me or under my direct supervision.

Signature *Jamie M. Lee* Date 3/29/05 License No. 42619

Title:  Land Surveyor     Professional Engineer     County Surveyor     County Engineer

Statement of Evidence:

North Quarter Corner Section 12, Township 134 North, Range 30 West

The Original Public Land Survey was run in 1868 and a wood post was set to mark the corner. Bearing tree ties were made to a Norway Pine and a White Pine.

In 1990 the Cass County Highway Department recovered an iron pipe monument in a gravel pit.

In 1993 the DNR, while working in Section 29, established a position for this corner. No monument was set.

In 2004 Kramer Leas DeLeo accepts this position as the correct location for the corner.

For details and survey analysis contact Kramer Leas DeLeo in Baxter, Minnesota.