

A000497236

OFFICE OF COUNTY RECORDER  
CASS COUNTY MINNESOTA

CERTIFIED, FILED, AND/OR  
RECORDED ON  
04/15/2005 12:29:03PM

AS DOC #: A000497236  
PAGES: 2  
REC FEES: \$0.00

KATHRYN M. NORBY  
COUNTY RECORDER

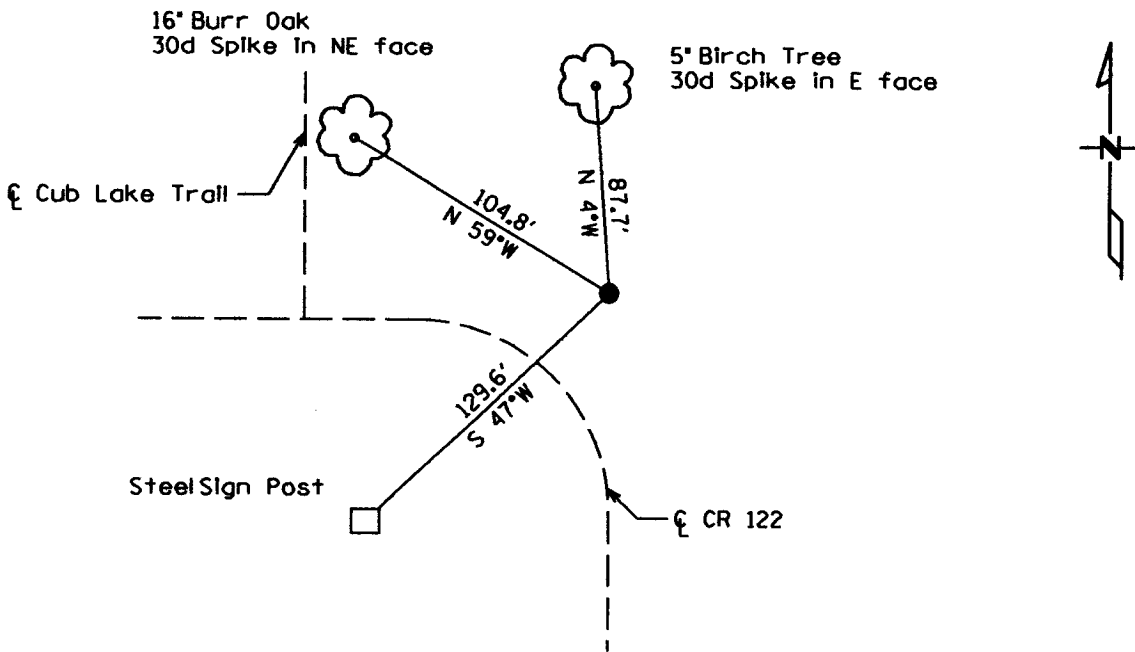
BY Kathryn M. Norby DEPUTY

# CERTIFICATE OF LOCATION OF GOVERNMENT CORNER

Northeast Corner of Section 4, Township 140, Range 30  
West Principal Meridian, State of Minnesota, County of Cass

At the corner location shown on the sketch:

- On 3/05/2004 found a 3/4" Iron pipe monument  
DATE
- left monument as found     lowered monument     removed monument (explain)
- On \_\_\_\_\_ placed a \_\_\_\_\_  
DATE



Statement of evidence for this corner location is on back of this page.

I hereby certify that this document was researched and prepared by me or under my direct supervision.

Signature Jawett A. Lee Date 3/29/05 License No. 42619  
 Title:  Land Surveyor     Professional Engineer     County Surveyor     County Engineer

Statement of Evidence:

Northeast Corner Section 4, Township 140 North, Range 30 West

The Original Public Land Survey was run in 1865 and a wood post was set to mark the corner. Bearing tree ties were made to a Tamarack and a Black Oak.

In 1978 the Cass County Highway Department recovered a ¾" iron pipe monument. Bearing tree ties were made to two Oak Trees and a Birch Tree.

Mr. Stevenson recovered a 1" iron pipe monument. Bearing tree ties were made to a White Oak, a Red Oak and a Telephone Pole.

In 2002 the Cass County Surveyor's Office recovered a 1" iron pipe monument.

In March 2004 Kramer Leas DeLeo recovered ¾" iron pipe monument and bearing tree ties were made to a Burr Oak, a Birch Tree, and to a steel sign post. Kramer Leas DeLeo accepts this position as the correct location for the corner.

For details and survey analysis contact Kramer Leas DeLeo in Baxter, Minnesota.