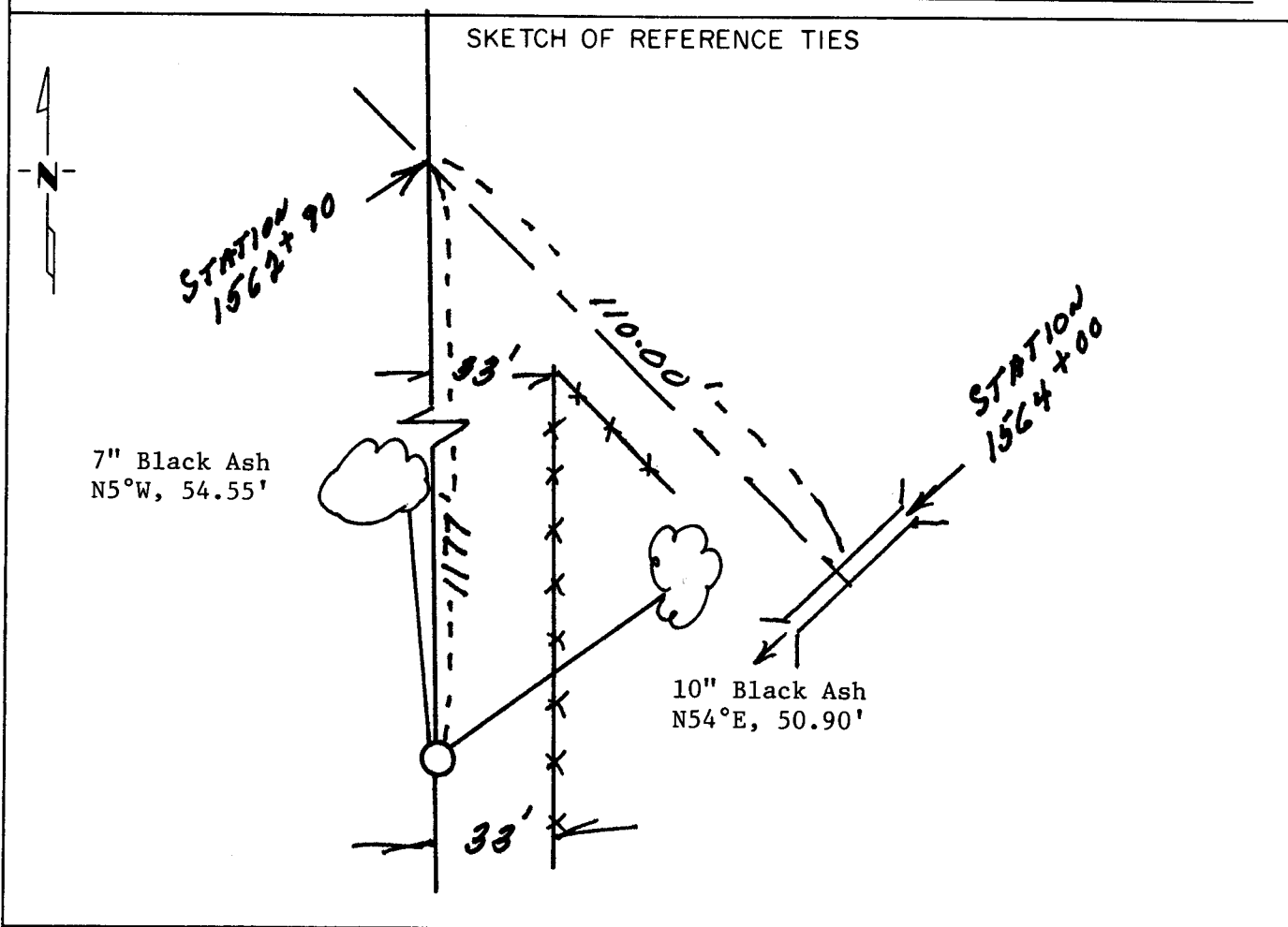


CERTIFICATE OF LOCATION OF GOVERNMENT CORNER

SECTION _____ Corner ^{to} ~~of~~ Sections 1 & 2, Township 140N, Range 25W, 5th P.M.
 STATE OF MINNESOTA, County of CASS

At the corner location shown on the sketch:

- On 12/20/02 ~~found~~ ^{DATE} Corner obliterated
- left monument as found, lowered monument, removed monument (explain)
- On 4/15/03 ^{DATE} placed a 1" x 6' steel rod (4 1/2' in soft ground)



Statement of evidence relative to this corner location is on back of page.



I hereby certify that this document and the data contained herein was prepared by me or under my direct supervision.

Milo E. Stefan 2/12/05
 SIGNATURE DATE

Registration No. 12261

- Land Surveyor
 County Surveyor

OFFICE OF THE COUNTY RECORDER

County of _____

I hereby certify that this document was filed in the Co. Recorders office at _____ .M. on the _____ day of _____ A.D., 19 _____

County Recorder _____

By _____, Deputy

DOCUMENT NO. _____

Statement of Evidence:

ORIGINAL SURVEY

18? - This corner was established by the U.S. General Land Office surveyor in running the 3rd guide meridian and at 80.00 chains set a wood post with two bearing trees:
8" Cedar, N55°W, 18 Links
7" Cedar, S35°W, 7 Links

SUBSEQUENT SURVEYS

1909 - The engineers for the railroad tied to this corner calling the distance Southerly on the 3rd guide 1177 feet. Stationing on this line being 1562+90. Stationing on the first draining structure East of the 3rd guide being 1564+00.

1910 - 1920 - Fred Blair in the operation of the lumber milling operation developed a 33 foot roadway Easterly of the 3rd guide with a fence line running parallel to the 3rd guide and on the East side of the roadway.

I restore this Section Corner from the railroad information and on the supporting roadway and fence line from Blair's operations.

Milo E Stefan



A000496585

OFFICE OF COUNTY RECORDER
CASS COUNTY MINNESOTA

CERTIFIED, FILED, AND/OR
RECORDED ON
03/29/2005 01:28:44PM

AS DOC #: A000496585
PAGES: 2
REC FEES: \$0.00

KATHRYN M. NORBY
COUNTY RECORDER

BY *Kathryn M Norby* DEPUTY
HV