

# CERTIFICATE OF LOCATION OF GOVERNMENT CORNER

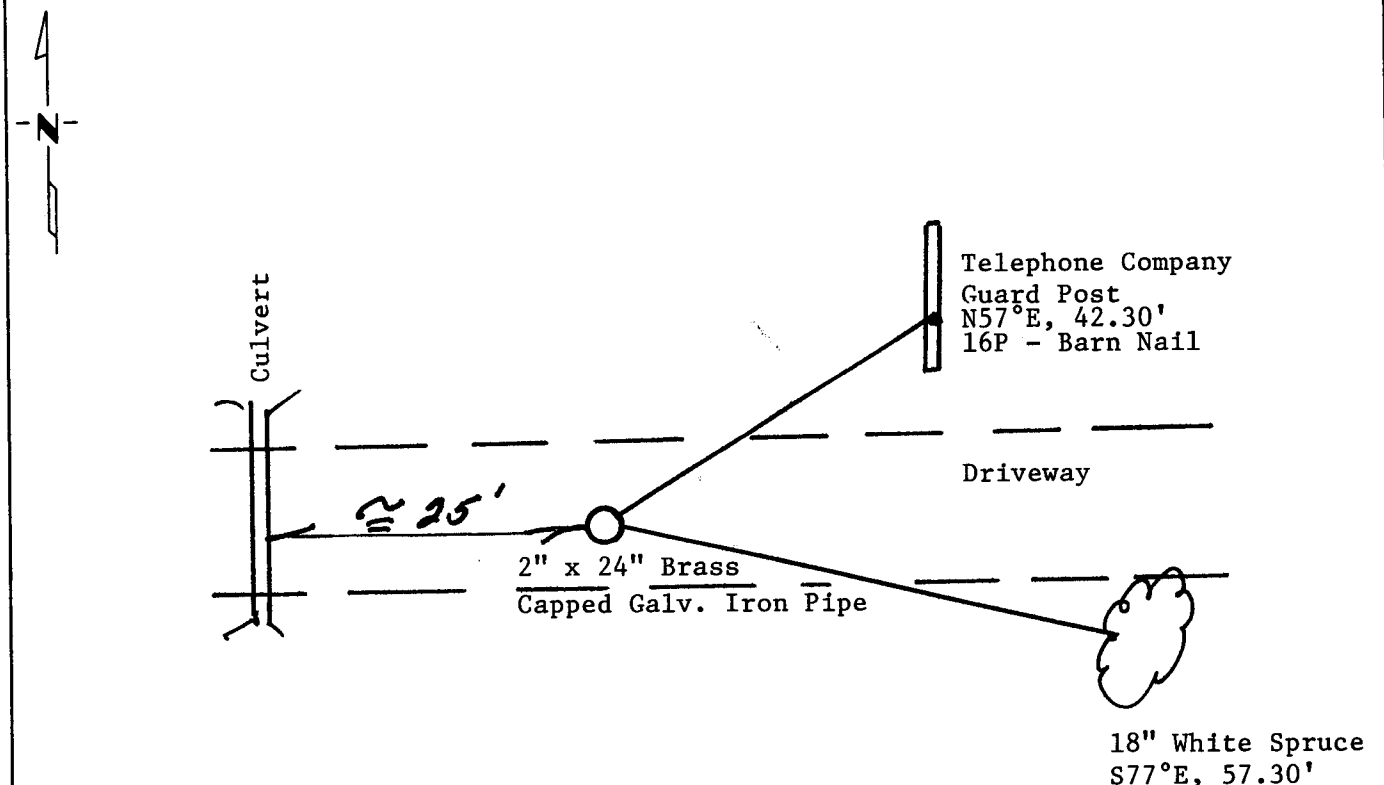
SECTION \_\_\_\_\_ Corner of Section 30/29, Township 142N, Range 25W, 5th P.M.  
31/32

STATE OF MINNESOTA, County of CASS

At the corner location shown on the sketch:

- On 4/20/99 found a 1 1/4" Iron pipe and steel rod bent over.  
DATE
- left monument as found,  lowered monument,  removed monument (explain)
- On 4/20/99 placed a Replaced bent rod with a 2" x 24" brass capped galv. iron pipe.  
DATE

## SKETCH OF REFERENCE TIES



Statement of evidence relative to this corner location is on back of page.

I hereby certify that this document and the data contained herein was prepared by me or under my direct supervision.

Milo E. Stefan 2/12/05  
SIGNATURE DATE

Registration No. 12261

- Land Surveyor  
 County Surveyor

### OFFICE OF THE COUNTY RECORDER

County of \_\_\_\_\_

I hereby certify that this document was filed in the Co. Recorders office at \_\_\_\_\_ .M. on the \_\_\_\_\_ day of \_\_\_\_\_ A.D., 19 \_\_\_\_\_

County Recorder \_\_\_\_\_

By \_\_\_\_\_, Deputy

DOCUMENT NO. \_\_\_\_\_



Statement of Evidence:

ORIGINAL SURVEY

April 1871 William Allen and Edgar Putnam at 80.00 chains set a wood post for the Section Corner to Sections 29, 30, 31 and 32; with four bearing trees:

- 8" Fir, N55°E, 23 Links
- 8" Fir, S60°E, 8 Links
- 16" Aspen, S60°W, 11 Links
- 8" Fir, N60°W, 20 Links

SUBSEQUENT SURVEYS

This corner was used to establish the E 1/16 Corner to Sections 30 and 31. No record of this survey has been located.

In about 1996 Walter Curo placed an iron rod next to the 1 1/2" iron pipe. He used this corner when working for James Swankier in the NE,NE of Section 31. This corner was pointed out to me by George Patterson, a long time resident of the NW,NW of Section 32.

I accept this iron pipe as a perpetuated location of the original corner.

*Milo E Stefan*



A000496584

OFFICE OF COUNTY RECORDER  
CASS COUNTY MINNESOTA

CERTIFIED, FILED, AND/OR  
RECORDED ON  
03/29/2005 01:28:43PM

AS DOC #: A000496584  
PAGES: 2  
REC FEES: \$0.00

KATHRYN M. NORBY  
COUNTY RECORDER

BY *Kathryn M. Norby* DEPUTY  
HV