

CERTIFICATE OF LOCATION OF GOVERNMENT CORNER

I hereby certify that this survey, plan, or report was prepared by me or under my direct supervision and that I am a duly Licensed Land Surveyor under the laws of the State of Minnesota

Terry L. Freeman
 TERRY L. FREEMAN

Date: 3/29/05 License No: 21367

OFFICE OF THE COUNTY RECORDER
 County of CASS

I hereby certify that this document was filed in the Office of the County Recorder at _____ o'clock _____ M. on the _____ day of _____, 20____ A.D.

County Recorder _____
 By: _____, Deputy
 DOCUMENT NO. _____

CENTER QUARTER Corner of Section 16, Township 140, Range 31, 5TH P.M.

On 03/02/05 found a 1 INCH IRON PIPE 2 INCHES BELOW ROAD SURFACE

left monument as found, lowered monument, removed monument (explain)

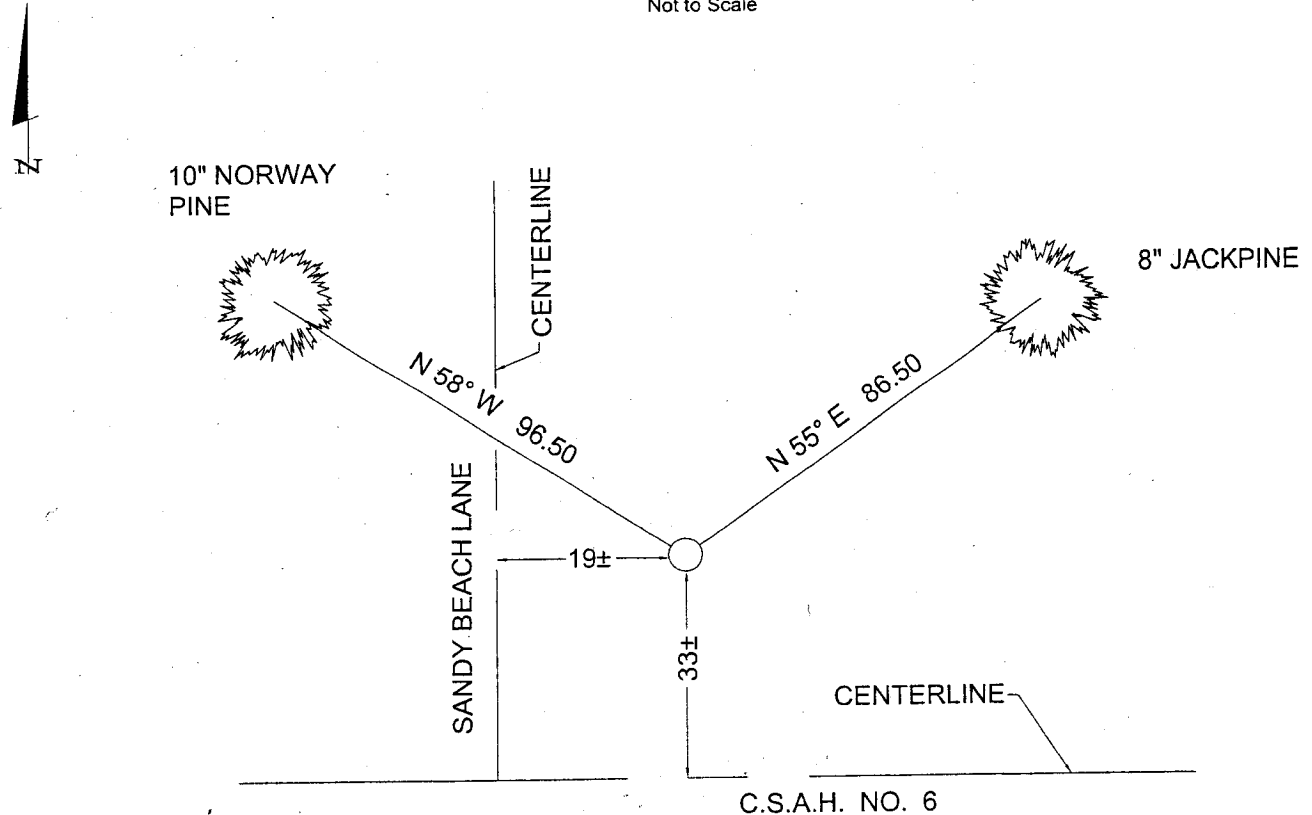
On _____ placed a _____

decl: 5° EAST (ASSUMED)

SKETCH OF REFERENCE TIES

INDEX NO. L-11

Not to Scale



ALL DISTANCES ARE HORIZONTAL TO NAIL IN BASE OF BEARING TREE.

Statement of evidence for this corner position is on the back of this page

STATEMENT OF EVIDENCE

Index No. L - 11

Center Quarter, Section 16, Township 140 North,
Range 31 West, Cass County, Minnesota

- 1927 John Green, County Surveyor, survey of Plat of THE SEA WALL shows an iron monument.
- 1963 Harold Curo, County Surveyor, survey of Plat of LONG PINE shows an iron monument.
- 1968 R.F. Schneider, RLS#5740, found a pipe in place 5 feet north of road centerline. He established the following witnesses: A 12 inch Jackpine, South 40 degrees East, 66.10 feet; A 12 inch Jackpine, South 12 degrees West, 52.20 feet. Both bearing trees having old blazes.
- 1973 Don Coulter, RLS#5852, shows an iron monument in place. He notes, however, that the monument is 1.30 feet north of the East-West Quarter line per plat of LONG PINE and per ties of County Surveyor R.F. Schneider.
- 1978 R.F. Schneider, RLS#5740, shows a spike in place set by the County. On record at Landecker and Associatees, Inc., Walker Office.
- 2005 A Landecker and Associates, Inc. survey crew found a 1 inch iron pipe 2 inches below the road surface and accepts the found monument for the Center Quarter position as monumented by previous surveyors in the plats referenced above from which the following accessories: A 10 inch Norway Pine, North 58 degrees West, 78.40 feet; An 8 inch Jackpine, North 55 degrees East, 61.10 feet.

A000496577
OFFICE OF COUNTY RECORDER
CASS COUNTY MINNESOTA
CERTIFIED, FILED, AND/OR
RECORDED ON
03/29/2005 01:28:36PM

AS DOC #: A000496577
PAGES: 2
REC FEES: \$0.00

KATHRYN N. NORBY
COUNTY RECORDER

BY Kathryn Norby DEPUTY
#1