

# CERTIFICATE OF LOCATION OF GOVERNMENT CORNER

EAST QUARTER \_\_\_\_\_ Corner of Section 5 , Township 137 , Range 30  
5TH Principal Meridian, State of Minnesota, County of Cass

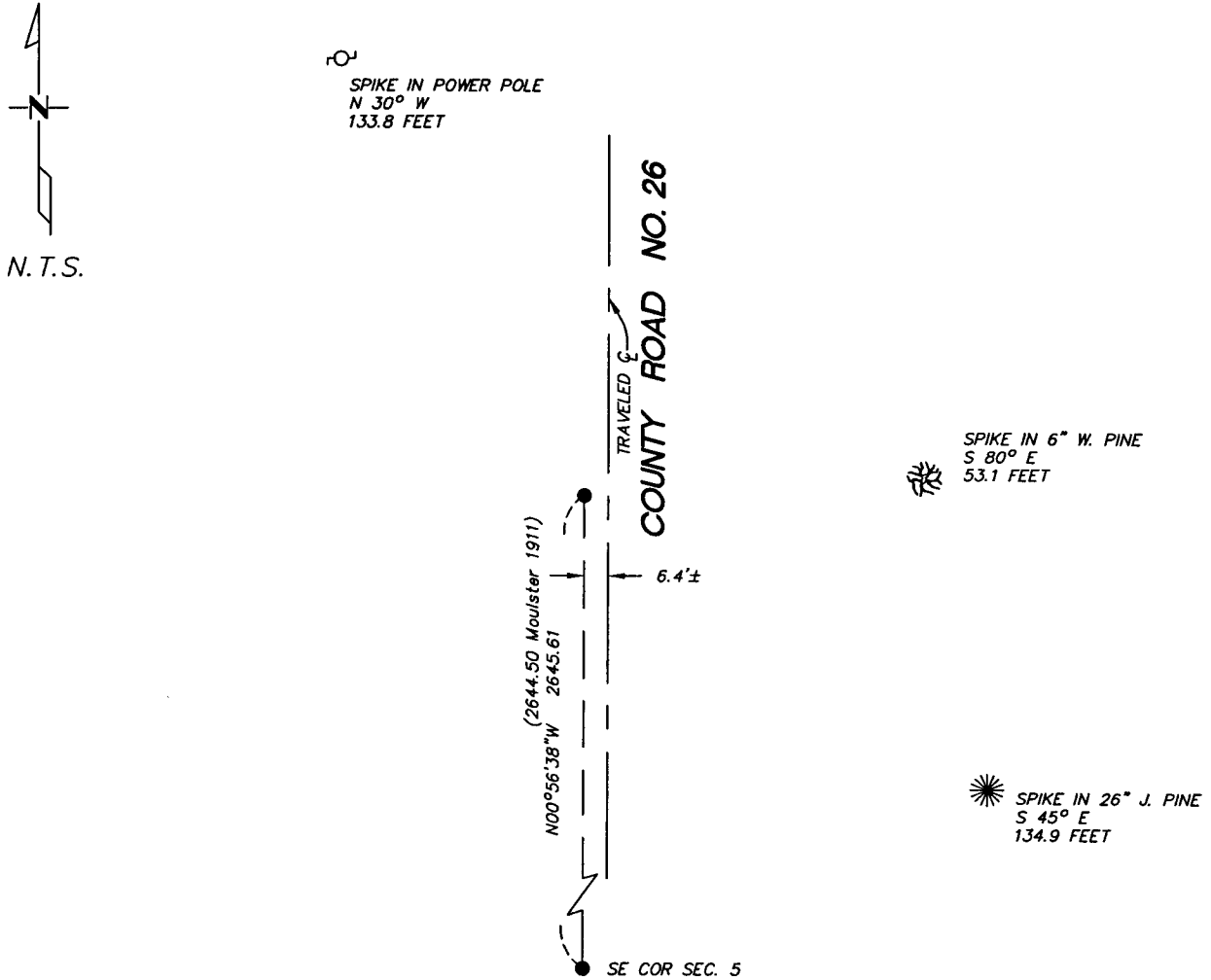
At the corner location shown on the sketch:

On 9/28/04 found a PK NAIL  
DATE

left monument as found     lowered monument     removed monument (explain)

On \_\_\_\_\_ placed a \_\_\_\_\_  
DATE

## SKETCH OF REFERENCE TIES



Statement of evidence relative to this corner location is on back of page.

I hereby certify that this document and the data contained herein was prepared by me or under my direct supervision.

Bruce Linn 10/1/04  
SIGNATURE DATE

Registration No. 17253

- Land Surveyor     Professional Engineer
- County Surveyor     County Engineer

OFFICE OF THE COUNTY RECORDER  
County of \_\_\_\_\_

I hereby certify that this document was filed in the Co. Recorders office at \_\_\_\_\_ M. on the \_\_\_\_\_ day of \_\_\_\_\_ A.D., 20\_\_\_\_

County Recorder \_\_\_\_\_

By \_\_\_\_\_, Deputy

DOCUMENT NO. \_\_\_\_\_

Statement of Evidence

East Quarter, Section 5, T. 137N. R. 30W., 5th P.M.

1870 - Wood post was set for corner.

1911 - A.W. Moulster found bearing trees. marked 1/4. (also on microfilm - roll 105, Book 50, P. 91). County Survey Record Book "B", p. 282-285. (Survey Record No. 29)

2004 - Westwood Professional Services, Inc. found PK nail in bituminous. Position fits reasonably well with Survey Record No. 29, Book "B", p. 284, ties to which are shown on the face of this certificate.

A000489886

OFFICE OF COUNTY RECORDER  
CASS COUNTY MINNESOTA

CERTIFIED, FILED, AND/OR  
RECORDED ON  
10/05/2004 01:18:58PM

AS DOC #: A000489886  
PAGES: 2  
REC FEES: \$0.00

KATHRYN M. NORBY  
COUNTY RECORDER

BY Kathryn M. Norby DEPUTY  
TV