

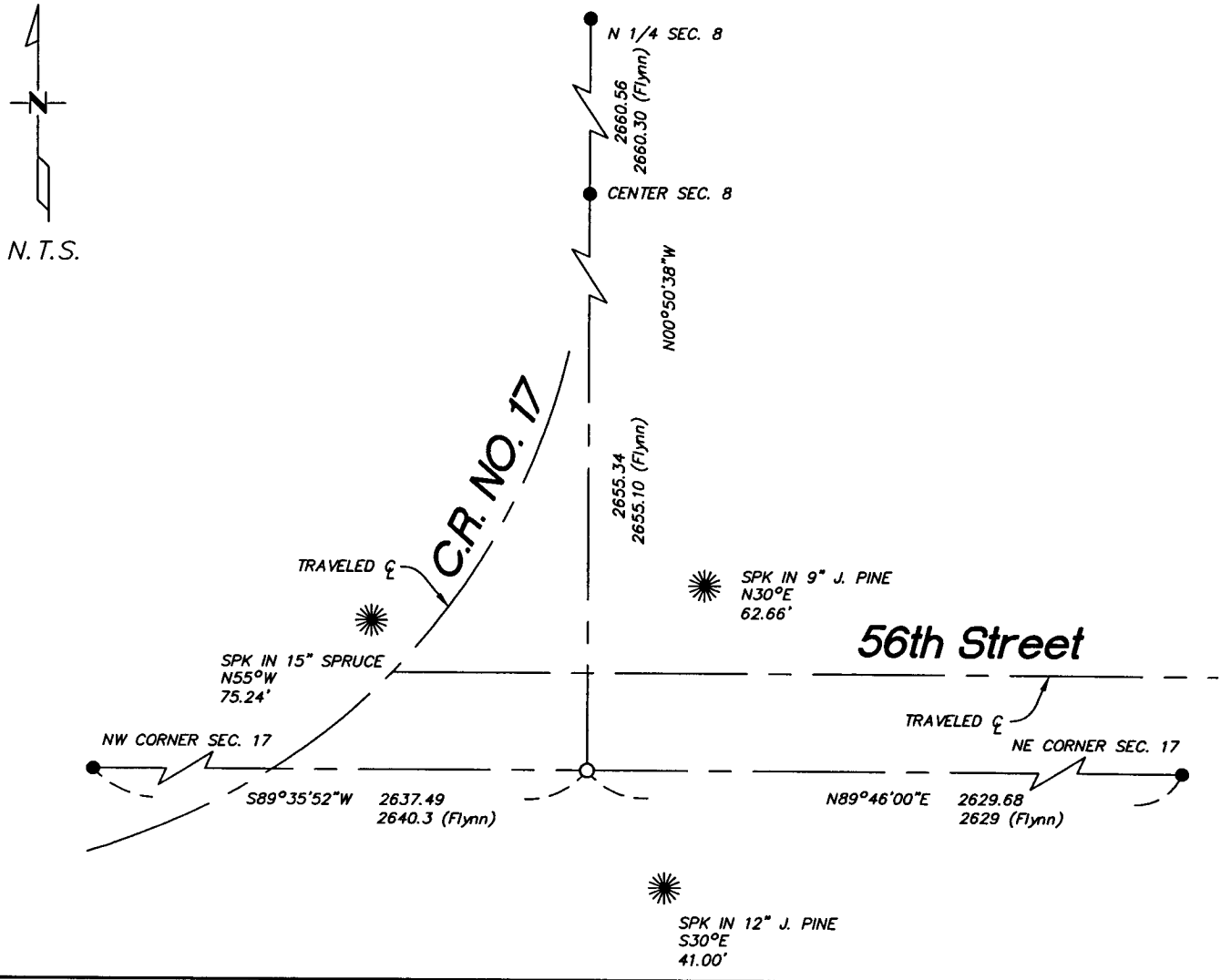
CERTIFICATE OF LOCATION OF GOVERNMENT CORNER

North 1/4 Corner _____ Corner of Section 17 , Township 136 , Range 29
5TH Principal Meridian, State of Minnesota, County of Cass

At the corner location shown on the sketch:

- On _____ found a _____
DATE
- left monument as found lowered monument removed monument (explain)
- On 5/13/04 placed a 1/2" iron pipe capped RLS 17253
DATE

SKETCH OF REFERENCE TIES



Statement of evidence relative to this corner location is on back of page.

I hereby certify that this document and the data contained herein was prepared by me or under my direct supervision.

[Signature] _____
SIGNATURE DATE

Registration No. 17253

- Land Surveyor Professional Engineer
- County Surveyor County Engineer

OFFICE OF THE COUNTY RECORDER
County of _____

I hereby certify that this document was filed in the Co. Recorders office at _____ M. on the _____ day of _____ A.D., 20____

County Recorder _____

By _____, Deputy

DOCUMENT NO. _____

Statement of Evidence

North 1/4 Corner, Section 17, T. 136N. R. 29W., 5th P.M.

1870 - Wood post was set for corner.

1917 - E.B. Horst set iron monument. (microfilm - Roll 105, Bk 64, P 76, 82)
County Book "C" P. 147, 148.

1918 - J.H. Flynn found iron monument. County Book "C" P 138.

2004 - Westwood Professional Services, Inc. set 1/2" iron monument capped
RLS 17253. Corner was reestablished using J.H. Flynn survey dated June 4, 1918.
The ties to which are shown on the front of this certificate.

A000488020

OFFICE OF COUNTY RECORDER
CASS COUNTY MINNESOTA

CERTIFIED, FILED, AND/OR
RECORDED ON
08/23/2004 09:04:03AM

AS DOC #: A000488020
PAGES: 2
REC FEES: \$0.00

KATHRYN M. NORBY
COUNTY RECORDER

BY Kathryn M. Norby
TV DEPUTY