

CERTIFICATE OF LOCATION OF GOVERNMENT CORNER

Northeast Corner of Section 29, Township 133, Range 29

5TH Principal Meridian, State of Minnesota, County of Cass

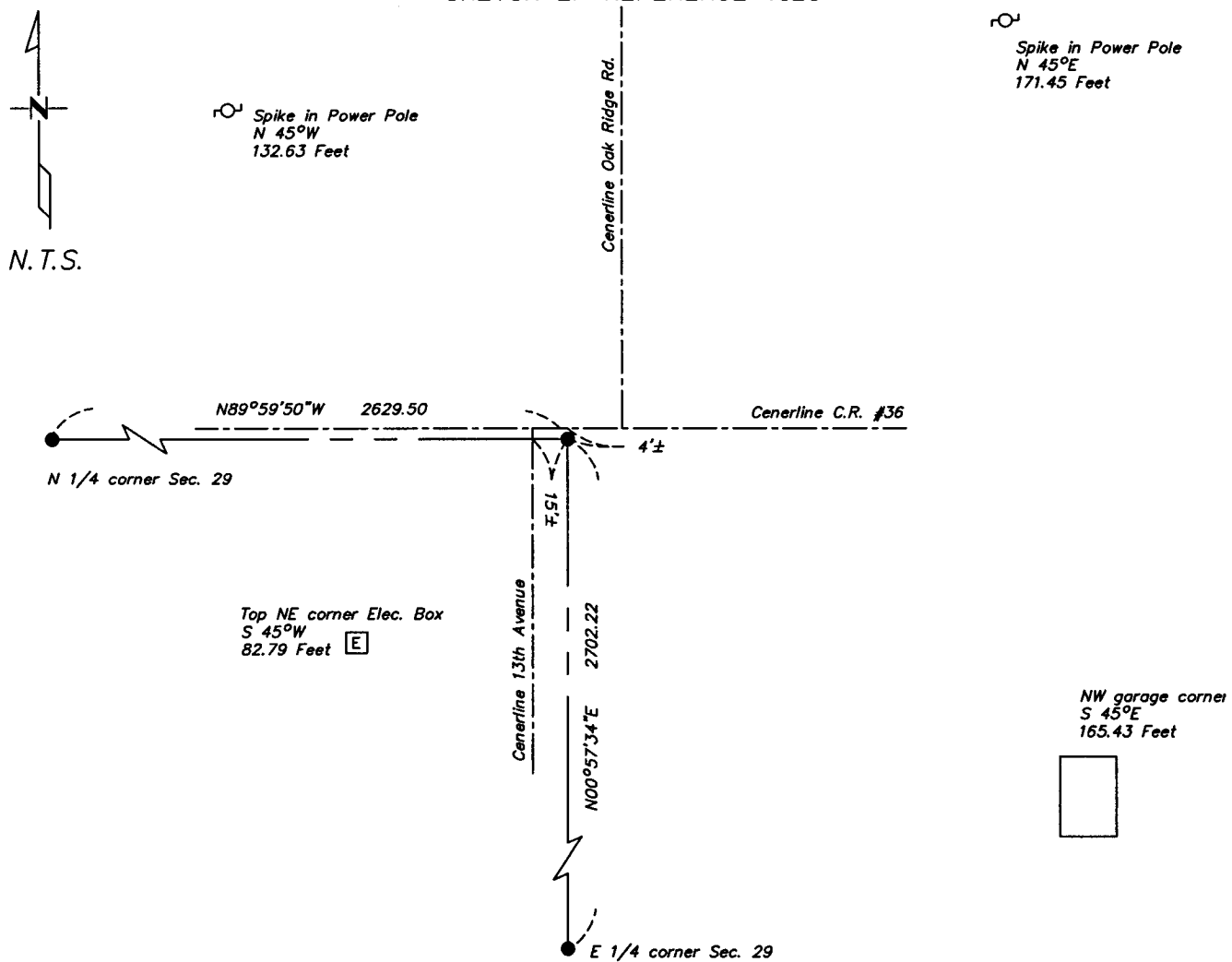
At the corner location shown on the sketch:

On 7/28/04 found a PK nail
DATE

left monument as found lowered monument removed monument (explain)

On _____ placed a _____
DATE

SKETCH OF REFERENCE TIES



Statement of evidence relative to this corner location is on back of page.

I hereby certify that this document and the data contained herein was prepared by me or under my direct supervision.

Burt Linn
SIGNATURE DATE 8/3/04

Registration No. 17253

- Land Surveyor Professional Engineer
- County Surveyor County Engineer

OFFICE OF THE COUNTY RECORDER
County of _____

I hereby certify that this document was filed in the Co. Recorders office at _____ M. on the _____ day of _____ A.D., 20____

County Recorder _____

By _____, Deputy

DOCUMENT NO. _____

Statement of Evidence

Northeast Corner, Section 29, T. 133N. R. 29W., 5th P.M.

1980 – Rieke Carroll Muller finds 1.5" pipe.

2004 – Westwood Professional Services, Inc. finds PK nail and pulls ties as shown on the face of this certificate. This position conforms to RCM position for section subdivision in 1980 survey for Perry Terwilliger.

A000487349

OFFICE OF COUNTY RECORDER
CASS COUNTY MINNESOTA

CERTIFIED, FILED, AND/OR
RECORDED ON
08/06/2004 11:09:22AM

AS DOC #: A000487349
PAGES: 2
REC FEES: \$0.00

KATHRYN M. NORBY
COUNTY RECORDER

BY Kathryn M. Norby
THV DEPUTY