

CERTIFICATE OF LOCATION OF GOVERNMENT CORNER

East 1/4 Corner _____ Corner of Section 19, Township 133, Range 29
5TH Principal Meridian, State of Minnesota, County of Cass

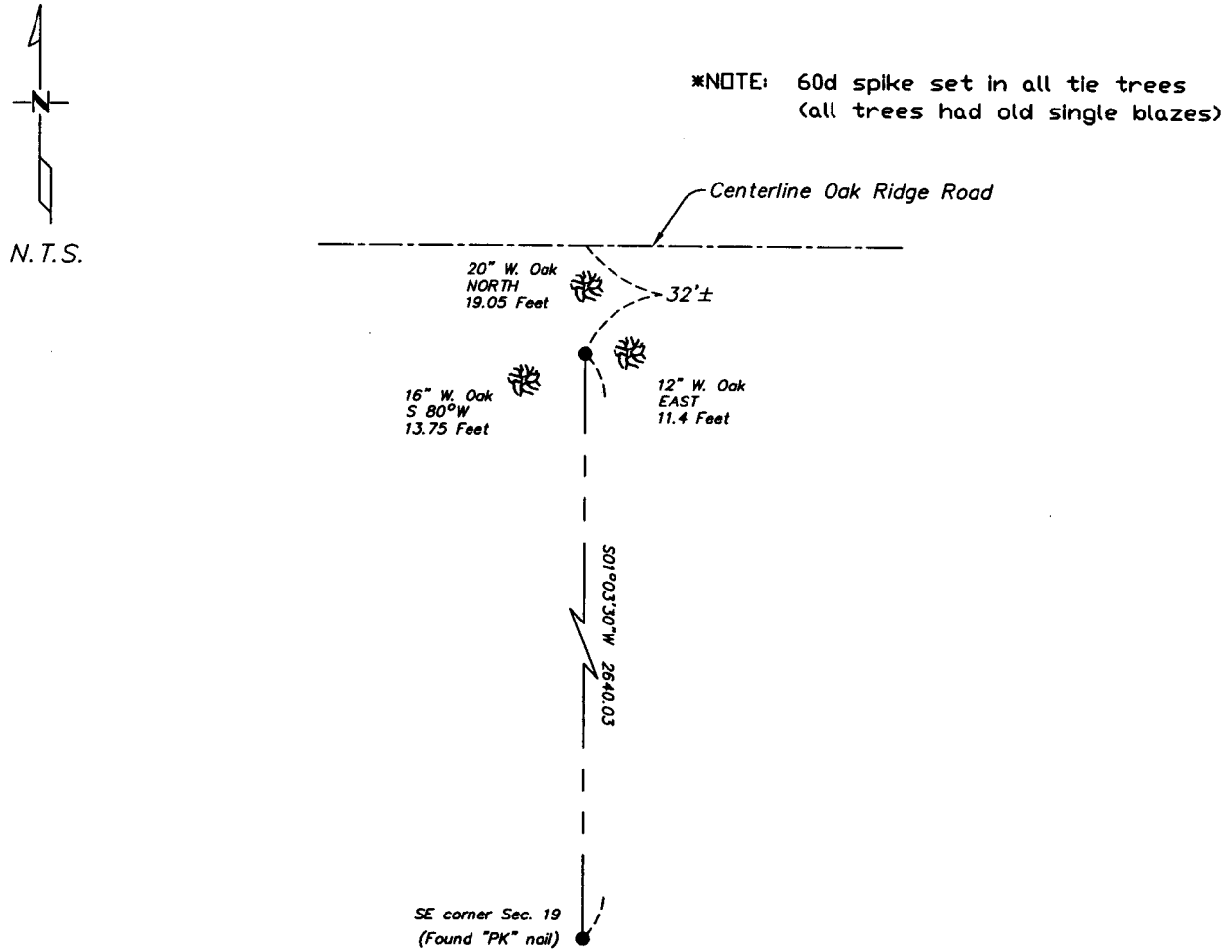
At the corner location shown on the sketch:

On 2/25/04 found a 1" pipe
DATE

left monument as found lowered monument removed monument (explain)

On _____ placed a _____
DATE

SKETCH OF REFERENCE TIES



Statement of evidence relative to this corner location is on back of page.

I hereby certify that this document and the data contained herein was prepared by me or under my direct supervision.

Bruce L. Linn 4/20/04
SIGNATURE DATE

Registration No. 17253

- Land Surveyor Professional Engineer
 County Surveyor County Engineer

OFFICE OF THE COUNTY RECORDER
 County of _____

I hereby certify that this document was filed in the Co. Recorders office at _____ M. on the _____ day of _____ A.D., 20____

County Recorder _____
 By _____, Deputy

DOCUMENT NO. _____

Statement of Evidence

East Quarter Corner, Section 19, T. 133N. R. 29W., 5th P.M.

1870 - Wood post was set for corner.

2004 - Westwood Professional Services, Inc. finds 1" pipe in place.

A000483085
OFFICE OF COUNTY RECORDER
CASS COUNTY MINNESOTA

CERTIFIED, FILED, AND/OR
RECORDED ON
05/04/2004 12:52:07PM

AS DOC #: A000483085
PAGES: 2
REC FEES: \$0.00

KATHRYN M. NORBY
COUNTY RECORDER

BY Kathryn M. Norby HV DEPUTY