


CERTIFICATE OF LOCATION OF GOVERNMENT CORNER

I hereby certify that this survey, plan, or report was prepared by me or under my direct supervision and that I am a duly Licensed Land Surveyor under the laws of the State of Minnesota.



 TERRY FREEMAN

Date: 2/6/04 License No: 21367

OFFICE OF THE COUNTY RECORDER
 County of CASS

I hereby certify that this document was filed in the Office of the County Recorder at _____ o'clock _____ M. on the _____ day of _____, 20____ A.D.

County Recorder _____

By: _____, Deputy
 DOCUMENT NO. _____

MEANDER CORNER Corner of Section 25,30, Township 144, Range 29,30, 5TH P.M.

On 2/27/03 found a G.L.O. BRASS CAP MONUMENT 1' ABOVE GROUND

left monument as found, lowered monument, removed monument (explain)

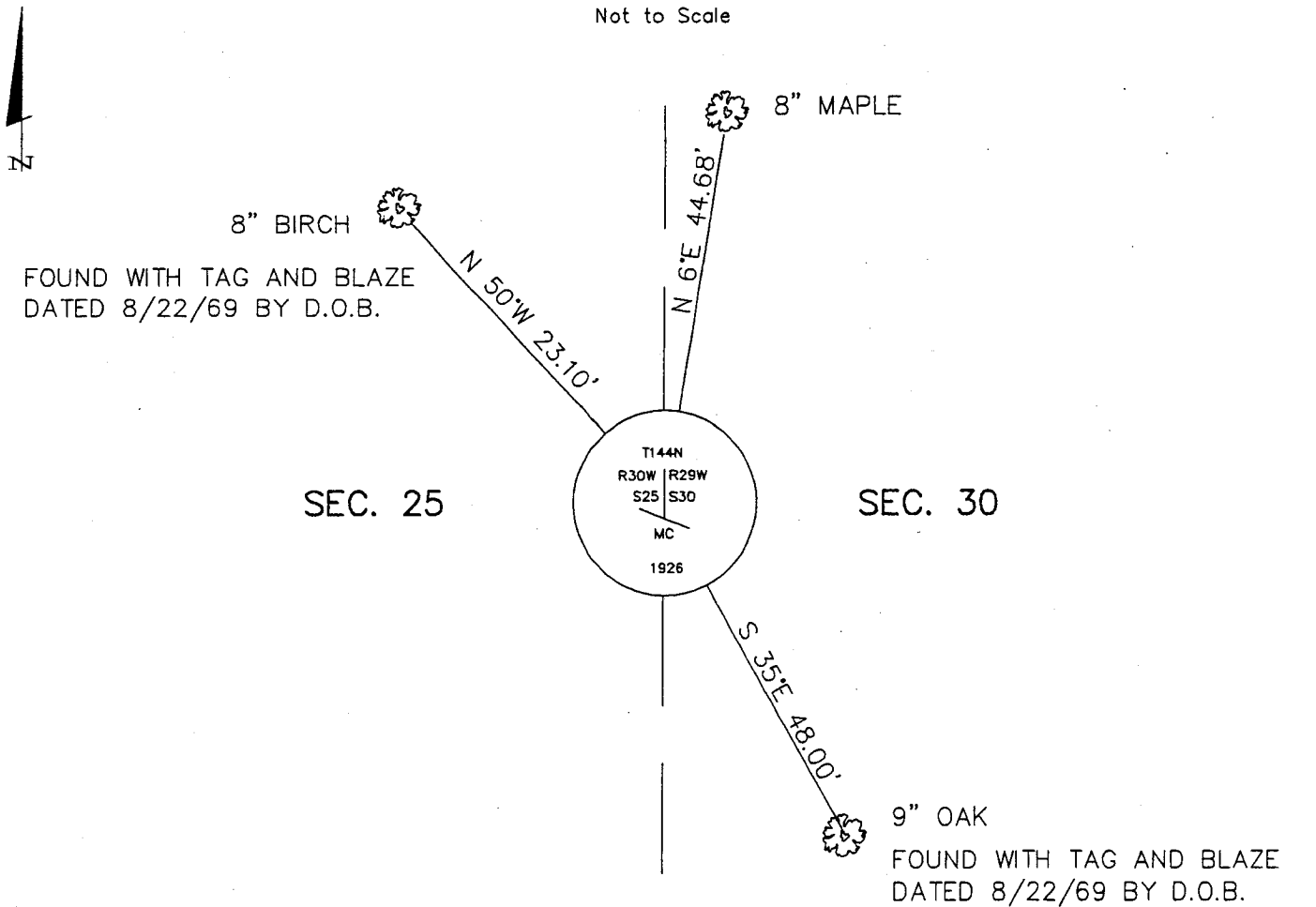
On _____ placed a _____

decl: 5° EAST (ASSUMED)

SKETCH OF REFERENCE TIES

INDEX NO. R/S-25

Not to Scale



THE BEARING TREES WERE MARKED WITH BT TAGS AND NAILS AT BASE.

ALL DISTANCES ARE HORIZONTAL TO NAIL IN BASE OF BEARING TREE.

Statement of evidence for this corner position is on the back of this page

STATEMENT OF EVIDENCE

Index No. R/ S - 25

Meander Corner between Sections 25 and 30, Township
144 North, Range 29 and 30 West, Cass County, Minnesota

- 1926 U.S. General Land Office established this corner position while performing a resurvey of a portion of the exterior and subdivisional lines and survey of Certain Indian Allotments in Township 144 North, Range 29 West. An iron post, 3 feet long, 1 inch diameter, 26 inches in the ground with brass cap was set with the following witnesses: A 12 inch Maple, South 42 degrees, 45 minutes East, 117 links; no other tree suitable for a bearing tree.
- 1983 A survey by William Okerman, RLS#6807, shows the G.L.O. brass cap monument in place. He accepts the monument for the corner position.
- 1988 A survey by Walt Curo, RLS#11395, shows the G.L.O. brass cap monument in place. He accepts the monument for the corner position.
- 1999 A survey by Paul B. Schoberg, RLS#14700, shows an iron monument in place at the meander corner position. He accepts the monument.
- 2003 February 27, a Landecker and Associates, Inc. survey crew found a G.L.O. brass cap monument in place and accepts the monument as the meander corner position. Also found were two bearing trees with nail and blaze. The bearing tree tags indicate that both were set by D.O.B. on February 22, 1969. The bearing trees found were as follows: A 9 inch Oak, South 35 degrees East, 48.00 feet; An 8 inch Birch, North 50 degrees West, 23.10 feet. Landecker and Associates, Inc. established the following witness: A 8 inch Maple, North 6 degrees East, 44.68 feet.

A000483075
 OFFICE OF COUNTY RECORDER
 CASS COUNTY MINNESOTA
 CERTIFIED, FILED, AND/OR
 RECORDED ON
 05/04/2004 12:51:57PM

AS DOC #: A000483075
 PAGES: 2
 REC FEES: \$0.00

KATHRYN M. NORBY
 COUNTY RECORDER
 BY Kathryn M. Norby *thv*
 DEPUTY