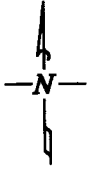


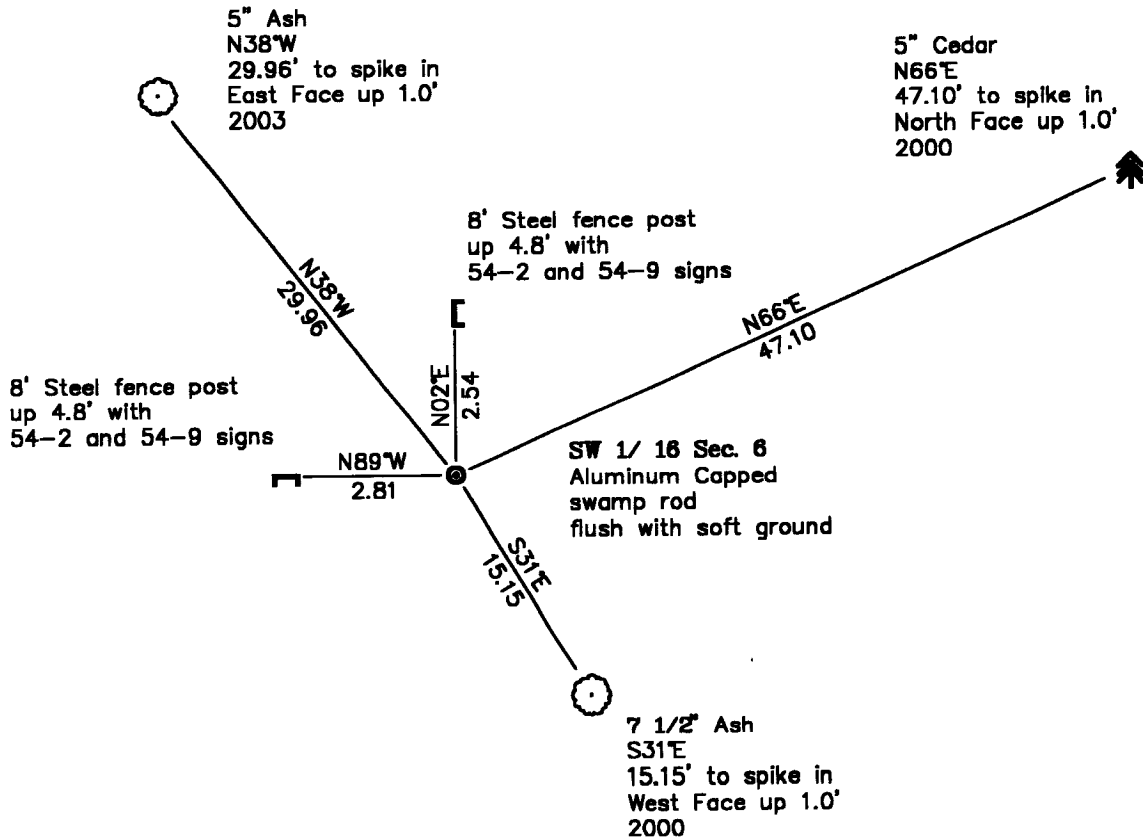
CERTIFICATE OF LOCATION OF GOVERNMENT CORNER

Southwest 1/16th Corner, Section 6, Township 141 North, Range 29 West, of the Fifth Principal Meridian, Cass County, Minnesota. The original 1" x 36" Iron pipe was found tipped and replaced with a 1" aluminum swamp rod with aluminum cap.

SKETCH OF REFERENCE TIES T 141 N, R 29 W



NOT TO SCALE



Bearings are Grid North, Minnesota Central Zone, measured with a hand compass adjusted to 3° East declination.

Abstract Document #480064

Statement of evidence relative to this corner location is on the back of this page

I hereby certify that this survey, plan, or report was prepared by me or under my direct supervision and that I am a duly Licensed Land Surveyor under the laws of the State of Minnesota.

Laverne Leueling 2-11-04
Laverne Leueling Date
Licensed Land Surveyor No. 16089
Northern Lights Surveying & Mapping, Inc

OFFICE OF THE COUNTY RECORDER
County of Cass

I hereby certify that this document was filed in the Recorder's office.

Time: 9:45 A.M. Date: 2-12-2004
Recorder Jaywyn M. Torby
By tlv Deputy
DOCUMENT NO. 480064

Statement of Evidence

Page 2 of 3

Southwest 1/16th Corner, Section 6, Township 141 North, Range 29 West, of the Fifth Principal Meridian, Cass County, Minnesota.

1918: Earl G. Harrington, US Surveyor, set a 1"x36" iron pipe with a brass cap from which he made the following BT's:

7" Cedar	14" Cedar
S68°E	N25°30'W
9 lks (5.94')	36 lks (23.76')

Notes of G.L.O. Resurvey of 1917, Page 184. Said notes are on file with the Secretary of State in Saint Paul, MN and copies are in the Cass County Surveyor's Office in Walker, MN.

January 12, 2000: R. Main, United States Forest Service, found the G.L.O. monument in place leaning South. He found a 3' high stump that matched bearing and distance to the G.L.O. 14" Cedar. He made the following BT's:
Book 6, Page 71.

7 1/2" Ash	5" Cedar
S31°E	N65°E
15.15' to spike	47.10' to spike

September, 2003: Northern Lights Surveying and Mapping, found the monument tipped badly. Found the Ash and Cedar BT's from 2000. Replaced the G.L.O. monument with 12' of swamp monument. Hit roots on the way down so had to stamp corner mark west of center. Monument is flush in cedar swamp. Made one new BT and added signs as shown on front. All BT's are painted and have tags.

5" Cedar	7 1/2" Ash	5" Ash
N66°E	S31°E	N38°W
47.10' to spike in	15.15' to spike in	29.96' to spike in
North Face up 1.0'	West Face up 1.0'	East Face up 1.0'
2000	2000	2003

8' Steel fence post	8' Steel fence post
N02°E 2.54'	N89°W 2.81'
up 4.8' with	up 4.8' with
54-2 and 54-9 signs	54-2 and 54-9 signs

The original copy of the notes are on page 73, Book 1 for contract No. 53-6392-3-2 for the USFS and are on file at the Supervisors Office of the Chippewa National Forest in Cass Lake, Minnesota. Copies are in the office of Northern Lights Surveying & Mapping in Grand Rapids, MN.

Coordinates by Static GPS:

Cass County North

Northing = 191,853.40'
Easting = 454,161.98'

State Plane Coordinate System
Minnesota Central Zone
NAD 83 (HARN 96)

Y = 1,077,814.02'
X = 2,587,140.41'

Geodetic Coordinates:

Latitude = 47° 03' 19.0328"N
Longitude = 94° 24' 01.9613"W