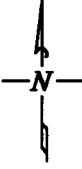
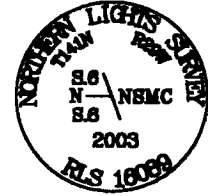


CERTIFICATE OF LOCATION OF GOVERNMENT CORNER

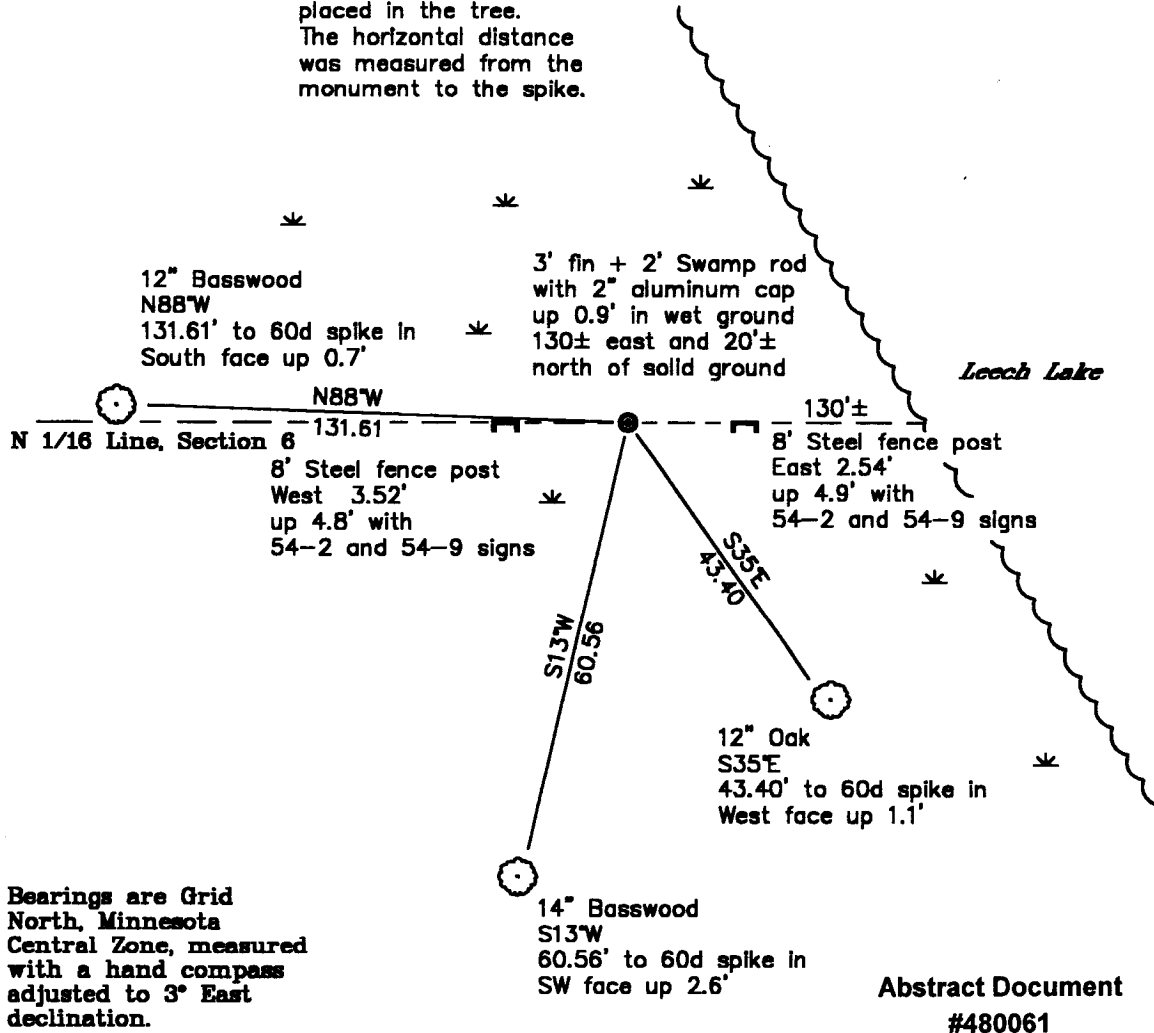
Special Meander Corner on North 1/16 line between Government Lot 1 and Government Lot 2, Section 6, Township 141 North, Range 29 West, of the 5th Principal Meridian. This corner was accepted as the original SMC set by the GLO Resurvey in 1918.

SKETCH OF REFERENCE TIES T 141 N, R 29 W


NOT TO SCALE



New bearing trees were blazed, scribed and painted red. A location tag was affixed to the tree. A 60d spike was placed in the tree. The horizontal distance was measured from the monument to the spike.

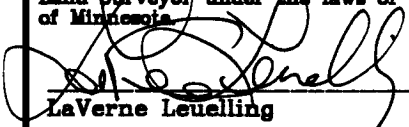


Bearings are Grid North, Minnesota Central Zone, measured with a hand compass adjusted to 3° East declination.

Abstract Document #480061

Statement of evidence relative to this corner location is on the back of this page

I hereby certify that this survey, plan, or report was prepared by me or under my direct supervision and that I am a duly Licensed Land Surveyor under the laws of the State of Minnesota.


LaVerne Leuelling
Date 2-11-04
Licensed Land Surveyor No. 16089
Northern Lights Surveying & Mapping, Inc.

OFFICE OF THE COUNTY RECORDER
County of Cass

I hereby certify that this document was filed in the Recorder's office.

Time: 9:30 A.M. Date: 2-12-2004
Recorder Raymond M. Newby
By HR, Deputy
DOCUMENT NO. 480061

Statement of Evidence

Page 2 of 2

Special Meander Corner on North 1/16 line between Government Lot 1 and Government Lot 2, Section 6, Township 141 North, Range 29 West, of the 5th Principal Meridian.

1918: Earl G. Harrington, US Surveyor, set a 1"x36" iron pipe with a brass cap from which he made the following BT's:

| | |
|-------------------|-------------------|
| 8" Poplar | 12" White Oak |
| S31°30'E | N56°15'W |
| 154 lks (101.64') | 203 lks (133.98') |

Notes of G.L.O. Resurvey of 1918, Page 186. Said notes are on file at the Secretary of State, Saint Paul, MN. Copies of these notes can be found at the Cass County Surveyor's Office, Walker, MN.

Bearing & Distance to the N 1/16 Sec. 1-6:
N89°53'W 10.18 chains (671.88')

December 1, 2003: J. Major and B. Thompson found the GLO 1" X 36" iron pipe with brass cap. The pipe was bent because a tree had fallen on it. They found no evidence of the bearing trees. They replaced the bent iron with 5' of aluminum swamp rod with a 2" aluminum cap and witnessed it with the following accessories: The original copy of the notes are on page 80, Book 1 and page 9, Book 2 for USFS contract No. 53-6392-3-2 and are on file at the Supervisor's Office of the Chippewa National Forest in Cass Lake, Minnesota. Copies are in the office of Northern Lights Surveying & Mapping in Grand Rapids, MN.

| | | |
|---|---|---|
| 12" Basswood | 14" Basswood | 12" Oak |
| N88°W | S13°W | S35°E |
| 131.61' to 60d spike in South face up 0.7' | 60.56' to 60d spike in SW face up 2.6' | 43.40' to 60d spike in West face up 1.1' |

| | |
|---------------------|---------------------|
| 8' Steel fence post | 8' Steel fence post |
| West 3.52' | East 2.54' |
| up 4.8' with | up 4.9' with |
| 54-2 and 54-9 signs | 54-2 and 54-9 signs |

Bearing & Distance to the N 1/16 Sec. 1-6: (Reset by Walt Curo, LLS 11395)
N89°53'53"W 672.79'

Coordinates by Static GPS:

Cass County North

Northing = 194,460.02'
Easting = 453,536.05'

State Plane Coordinate System
Minnesota Central Zone
NAD 83 (HARN 96)

Y = 1,080,220.20'
X = 2,586,513.34'

Geodetic Coordinates:

Latitude = 47° 03' 44.7440"N
Longitude = 94° 24' 11.0802"W