

CERTIFICATE OF LOCATION OF GOVERNMENT CORNER

NORTH QUARTER Corner of Section 16, Township 136, Range 29, 5TH P.M.

STATE OF MINNESOTA, County of CASS

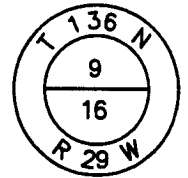
At the location shown on the sketch:

On 12/05/03 found a 2 1/2" IRON PIPE MONUMENT, 2' ABOVE GROUND
DATE

left monument as found, lowered monument, removed monument (explain)

On _____ placed a _____
DATE

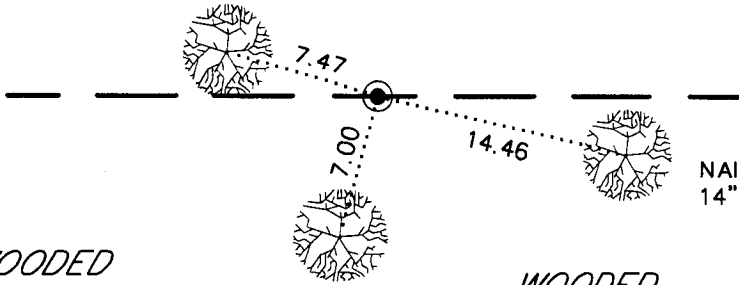
SKETCH OF REFERENCE TIES
(NOT TO SCALE)



WOODED

OPEN AREA

NAIL IN NE SIDE
6" PINE, 2' UP



NAIL IN SW SIDE
14" BIRCH, 2' UP

WOODED

WOODED

NAIL IN W SIDE
12" BIRCH, 2' UP

Abstract Document
#479090

Statement of evidence relative to this corner is on back of page.

I hereby certify that this survey, plan or report was prepared by me or under my direct supervision and that I am a duly Licensed Land Surveyor under the laws of the State of Minnesota.

Dan R. Rasmussen

Date 1/06/04 Registration No. 16102

OFFICE OF THE COUNTY RECORDER
County of Cass

I hereby certify that this document was filed in the Co. Recorders office at 9:15A .M. on the 16th day of January A.D., 20 04
County Recorder

By Kathryn M. Noby, Deputy

DOCUMENT NO. 479090

STATEMENT OF EVIDENCE: NORTH QUARTER CORNER OF SECTION 16, T.136N., R.29W.

1870 The original government survey of Township 136 North, Range 29 West, 5th Principal Meridian was run by the U.S. General Land Office. A wood post was set at this section corner and reference ties were established to witness its location.

1909 John Curo, County Surveyor, searched for this section corner in March of 1909. The corner and the old bearing tree stumps could not be found because of deep snow. The search was abandoned at this time and the actual corner location was not established. The field notes for this survey are recorded in County Surveyor Record Book A, page 571, on file in the County Surveyor's Office.

1917 In January of 1917 E.B. Horst conducted a survey to locate the center line of the Mayo Brook County Road along the north line of Sections 16, 17 and 18, T. 136 N., R. 29 W. Horst's field notes indicate that the original bearing tree stumps were recovered during the survey. The corner was monumented with a 2 inch diameter iron pipe 48 inches long. The field notes for this survey are recorded in Survey Record Book C, page 146, on file in the Cass County Surveyor's Office.

1948 Harold J. Curo, Cass County Surveyor, recovered a 2 inch capped iron pipe monument at this corner in November of 1948. He accepted the capped iron pipe as the true Quarter Corner, previously monumented by Horst in 1918. Two new bearing trees were established to witness its location.

1978 Landecker and Associates, a Land Surveying firm located in Pequot Lakes, Minnesota, conducted a survey in Section 16, T. 136 N., R.29 W. to establish the boundaries for the plats of **MILLER SHORES** and **PINEVIEW NORTH**. An iron monument was found at this corner and was accepted as the true location for the Quarter Corner.

2003 Widseth Smith Nolting (WSN) conducted a survey in Section 16 to determine the boundaries of the SW1/4-NW1/4, the SE1/4-NW1/4 and the SW1/4-NE1/4. The County Surveyor's Office was contacted for any survey information available to help retrace the boundaries of Section 16. A WSN survey crew searched for this corner and recovered a 2 ½ inch iron pipe monument. Measurements taken to other recovered section corners verified this pipe to be the same monument established by Horst in 1917 from the original bearing tree stumps. It was accepted as the true position for the corner and new reference ties were established to witness its location.