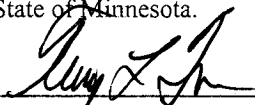


CERTIFICATE OF LOCATION OF GOVERNMENT CORNER

I hereby certify that this survey, plan, or report was prepared by me or under my direct supervision and that I am a duly Licensed Land Surveyor under the laws of the State of Minnesota.


TERRY L. FREEMAN

Date: 9/30/03 License No: 21367

OFFICE OF THE COUNTY RECORDER
County of CASS

I hereby certify that this document was filed in the Office of the County Recorder at 12:00 o'clock P.M. on the 7th day of Oct., 20 03 A.D.

County Recorder Kathryn M. Norby

By: du, Deputy
DOCUMENT NO. 474531

EAST QUARTER Corner of Section 29, Township 140, Range 26, 5TH P.M.

On 9/16/03 found a 3/4" IRON PIPE WITH PLASTIC CAP MARKED RLS 9672

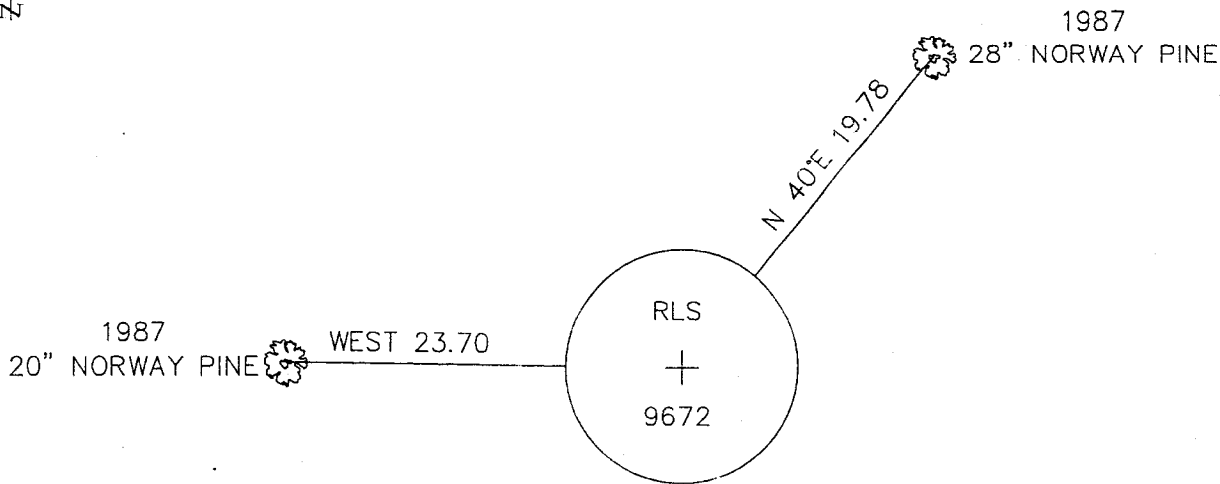
left monument as found, lowered monument, removed monument (explain)

On _____ placed a _____

decl: 5° EAST (ASSUMED)

SKETCH OF REFERENCE TIES

Not to Scale



ALL DISTANCES ARE HORIZONTAL
TO NAIL IN BASE OF BEARING TREE.

Statement of evidence for this corner position is on the back of this page

East Quarter, Section 29, Township 140 North, Range 26
West, Cass County, Minnesota

- 1871 Walker, Allen, & Putnam, U.S. Deputy Surveyors originally established this corner while surveying the subdivision and meander lines of Township 140 North, Range 26 West. A wood post was set to mark the corner position with the following witnesses: A 24 inch Norway Pine, North 8 degrees East, 71 links; A 18 inch Norway Pine, North 80 degrees West, 24 links.
- 1987 Wallace F. Buckler, Registered Land Surveyor, set a $\frac{3}{4}$ inch iron pipe at the lost position with the following accessories: A 20 inch Norway Pine, West 23.70 feet; A 28 inch Norway Pine, North 40 degrees East 19.78 feet.
- 2003 September 16, a Landecker & Associates, Inc. survey crew found a $\frac{3}{4}$ inch iron pipe and accepts the corner as the Quarter corner.