

CERTIFICATE OF LOCATION OF GOVERNMENT CORNER

Northeast Corner _____ Corner of Section 17 , Township 133 , Range 29

STH Principal Meridian, State of Minnesota, County of Cass

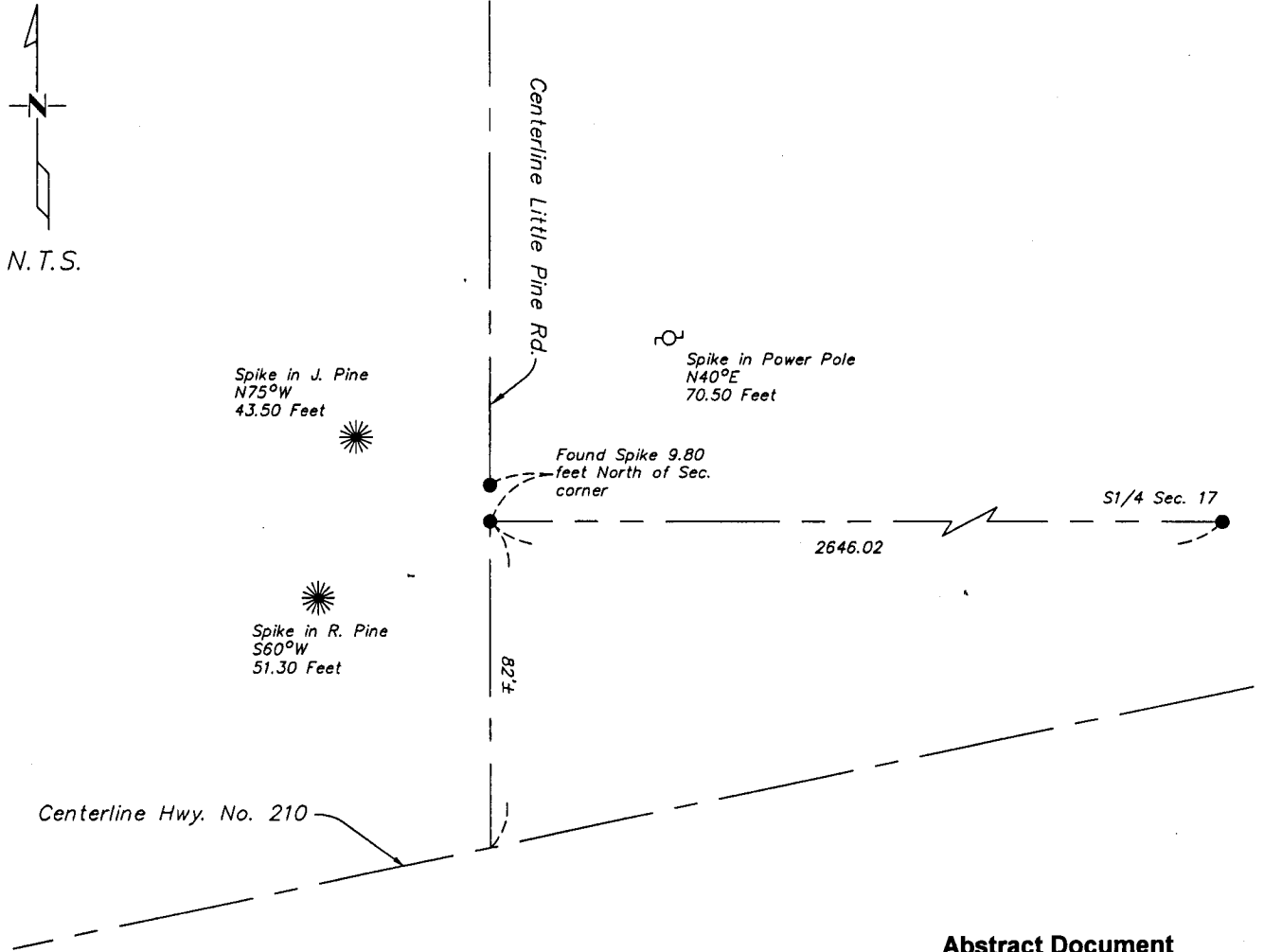
At the corner location shown on the sketch:

On 8/27/03 found a Nail
DATE

left monument as found lowered monument removed monument (explain)

On _____ placed a _____
DATE

SKETCH OF REFERENCE TIES



**Abstract Document
#473005**

Statement of evidence relative to this corner location is on back of page.

I hereby certify that this document and the data contained herein was prepared by me or under my direct supervision.

Bruce Lewis 9/3/03
SIGNATURE DATE

Registration No. 17253 Bruce Lewis

- Land Surveyor Professional Engineer
 County Surveyor County Engineer

OFFICE OF THE COUNTY RECORDER
County of Cass

I hereby certify that this document was filed in the Co. Recorders office at 10:45AM, on the 11th day of Sept. A.D., 2003

County Recorder Kathryn M. Morby
By _____ de Deputy

DOCUMENT NO. 473005

Statement of Evidence

Northeast Corner, Section 17, T. 133N. R. 29W., 5th P.M.

1870 – Wood post was set for corner.

1915 – John Curo found old wood post and Gov't bearing trees, replaced with 2" iron pipe.

1918 – E.B. Horst found Iron Monument

2001 – Cass County Surveyor finds spike down 0.2' and pulls ties. Appears as though they tied out to the spike 9.80' to the north of actual corner location.

2003 – Westwood Professional Services, Inc. finds spike inplace and pulls new ties as shown on the face of this certificate.