

CERTIFICATE OF LOCATION OF GOVERNMENT CORNER

East Quarter _____ Corner of Section 16, Township 133, Range 29

5TH Principal Meridian, State of Minnesota, County of Cass

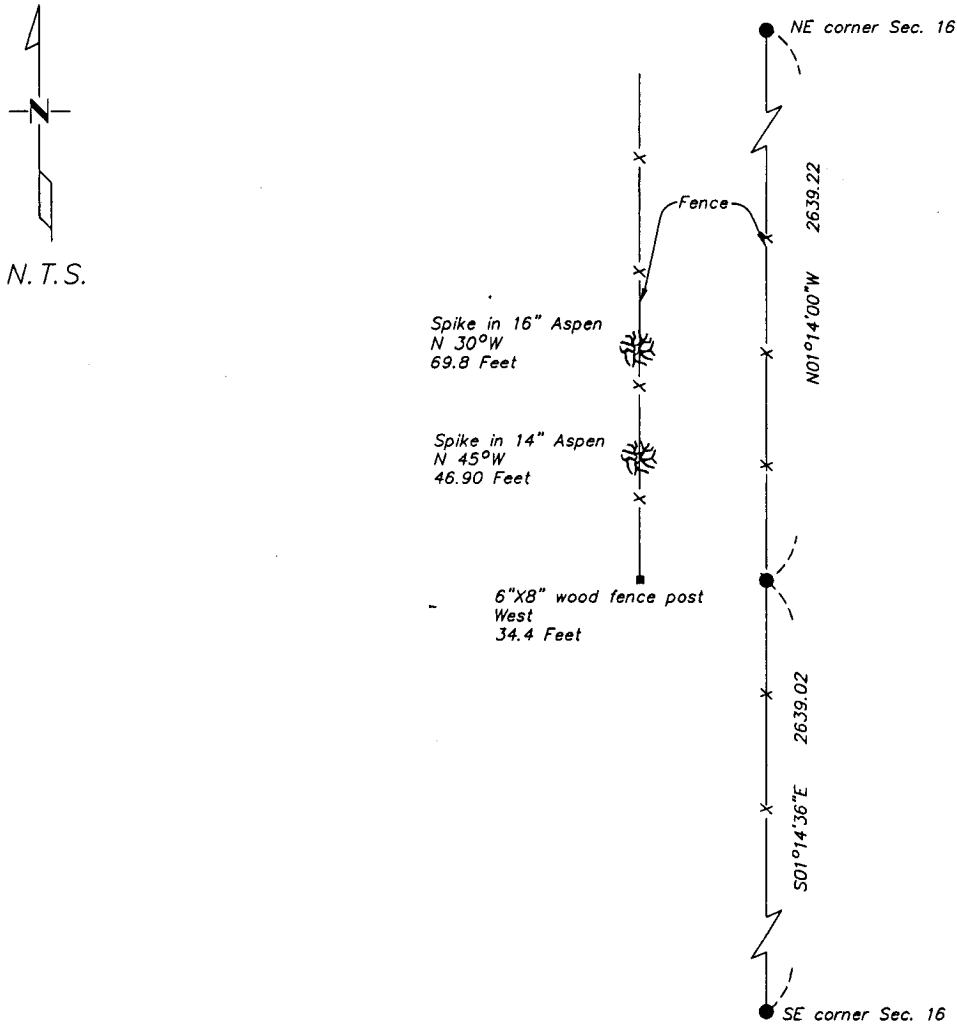
At the corner location shown on the sketch:

On 8/27/03 found a 1.5" pipe
DATE

left monument as found lowered monument removed monument (explain)

On _____ placed a _____
DATE

SKETCH OF REFERENCE TIES



**Abstract Document
#473004**

Statement of evidence relative to this corner location is on back of page.

I hereby certify that this document and the data contained herein was prepared by me or under my direct supervision.

Bruce Lewis 9/3/03
SIGNATURE DATE
Registration No. 17253 Bruce Lewis

- Land Surveyor Professional Engineer
 County Surveyor County Engineer

OFFICE OF THE COUNTY RECORDER
County of Cass

I hereby certify that this document was filed in the Co. Recorders office at 10:40 A.M. on the 11th day of Sept A.D., 2003

County Recorder Kathryn M. Norky
By _____ de Deputy

DOCUMENT NO. 473004

Statement of Evidence

East Quarter, Section 16, T. 133N. R. 29W., 5th P.M.

1870 – Wood post was set for corner.

1997 – Plat of survey by W. Buckler shows monument found.

2003 – Westwood Professional Services, Inc. finds 1.5" pipe and pulls ties as shown on the face of this certificate.