

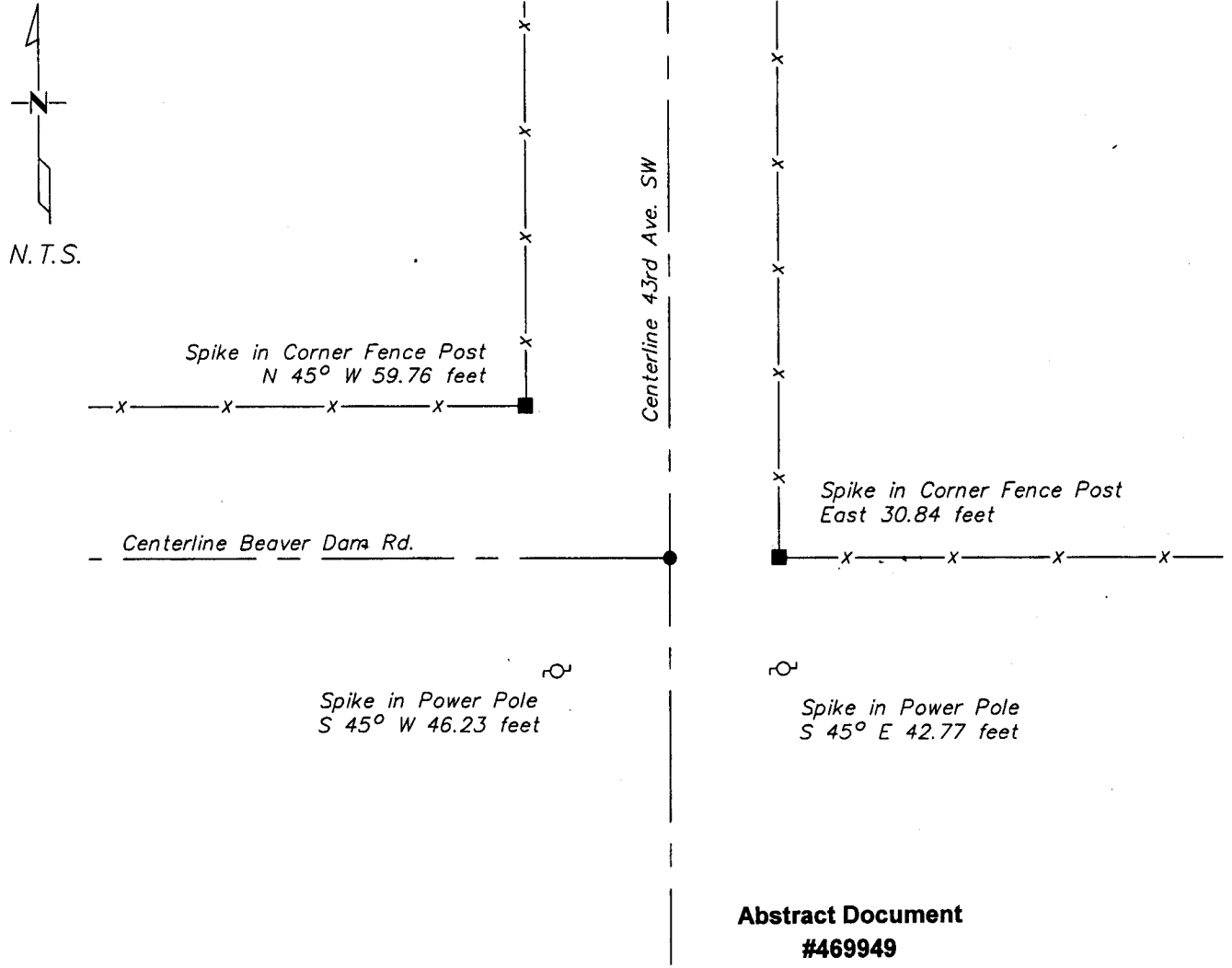
CERTIFICATE OF LOCATION OF GOVERNMENT CORNER

North Quarter _____ Corner of Section 7 , Township 133 , Range 30
5TH Principal Meridian, State of Minnesota, County of Cass

At the corner location shown on the sketch:

- On 4/2002 found a 1/2" iron pipe capped #11865
DATE
- left monument as found lowered monument removed monument (explain)
- On _____ placed a _____
DATE

SKETCH OF REFERENCE TIES



Abstract Document
#469949

Statement of evidence relative to this corner location is on back of page.

I hereby certify that this document and the data contained herein was prepared by me or under my direct supervision.

Bruce Linn 7/15/03
SIGNATURE DATE

Registration No. 17253

Land Surveyor Professional Engineer
 County Surveyor County Engineer

OFFICE OF THE COUNTY RECORDER
County of Cass

I hereby certify that this document was filed in the Co. Recorders office at 9:05A.M. on the 16th day of July A.D., 2003

County Recorder Kathryn M. Morby
By de Deputy

DOCUMENT NO. 469949

Page 1 of 2 Pages

Statement of Evidence

North 1/4, Section 7, T. 133N. R. 30W., 5th P.M.

1870 – Wood post was set for corner.

2002 – Westwood Professional Services, Inc. finds 1/2" iron piped down 0.3' capped #11865. Ties to which are shown on the front of this sheet.