

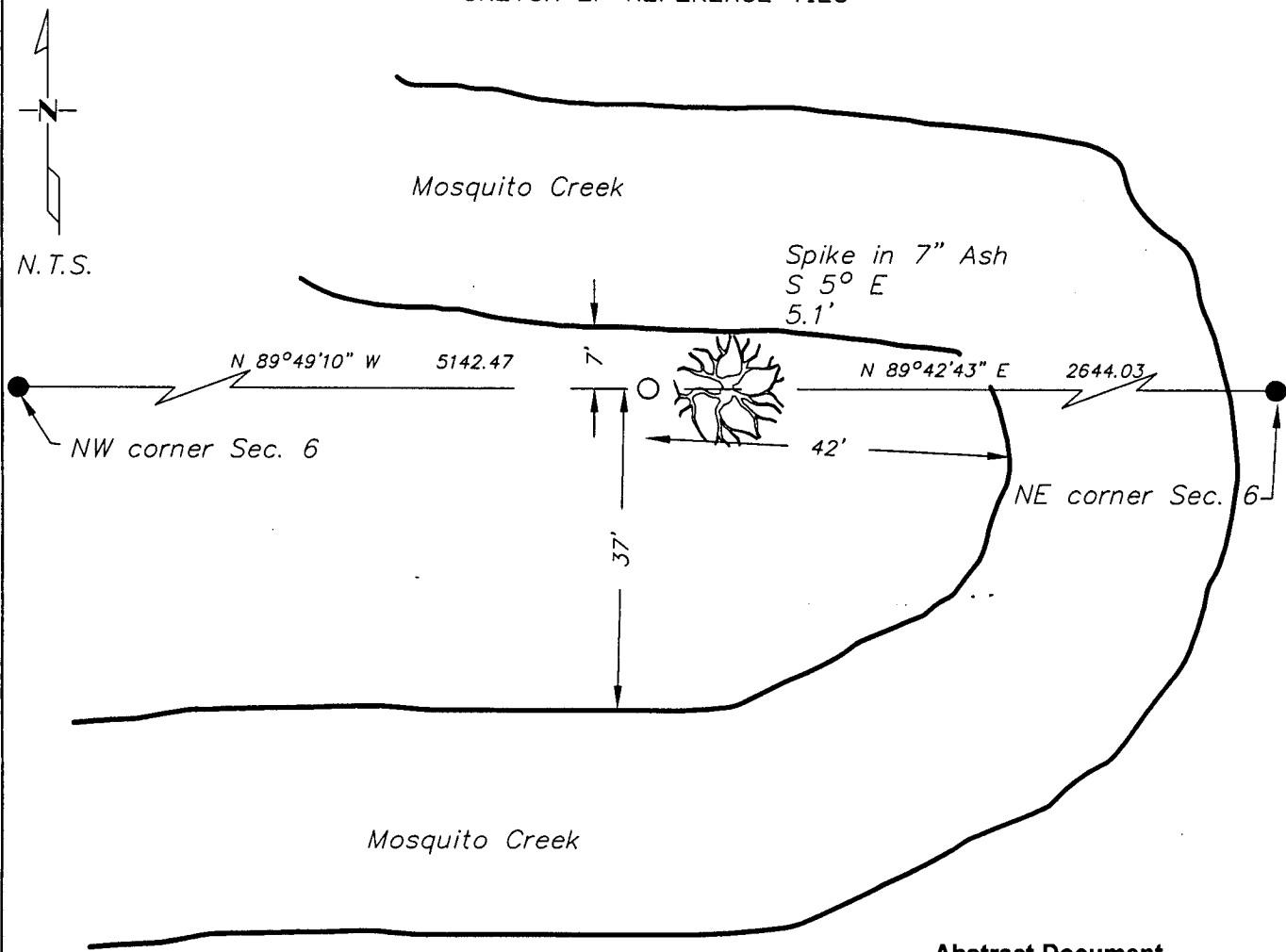
# CERTIFICATE OF LOCATION OF GOVERNMENT CORNER

North Quarter Corner of Section 6, Township 133, Range 31  
5TH Principal Meridian, State of Minnesota, County of Cass

At the corner location shown on the sketch:

- On \_\_\_\_\_ found a \_\_\_\_\_  
DATE
- left monument as found     lowered monument     removed monument (explain)
- On 3/24/03 placed a 1/2" iron pipe capped #17253  
DATE

## SKETCH OF REFERENCE TIES



Abstract Document  
#467572

Statement of evidence relative to this corner location is on back of page.

I hereby certify that this document and the data contained herein was prepared by me or under my direct supervision.

Bruce Linn 5/27/03  
SIGNATURE DATE  
Registration No. 17253

- Land Surveyor     Professional Engineer
- County Surveyor     County Engineer

OFFICE OF THE COUNTY RECORDER  
County of Cass

I hereby certify that this document was filed in the Co. Recorders office at 9:55A.M. on the and day of June A.D., 2003

County Recorder Kathryn M. Morby  
By Della Cadwell, Deputy  
DOCUMENT NO. 467572

Statement of Evidence

North 1/4, Section 6, T. 133N. R. 31W., 5th P.M.

The Original Land Survey was run in 1863 by George W. Wright and a wood post was set to mark the corner.

In 1987 Comstock and Davis Inc. did a survey for Ira Allen dated Jan. 22, 1987, Job #FL86071 and computed a proportioned lost position for east/west direction and set the north/south position based on fence remains approximately 130"± to the east. It appears as though nothing was set.

In 2003 Westwood Professional Services set a 1/2" iron pipe capped with number 17253 at Comstock and Davis' computed position. Ties to which are shown on the front of this page.