

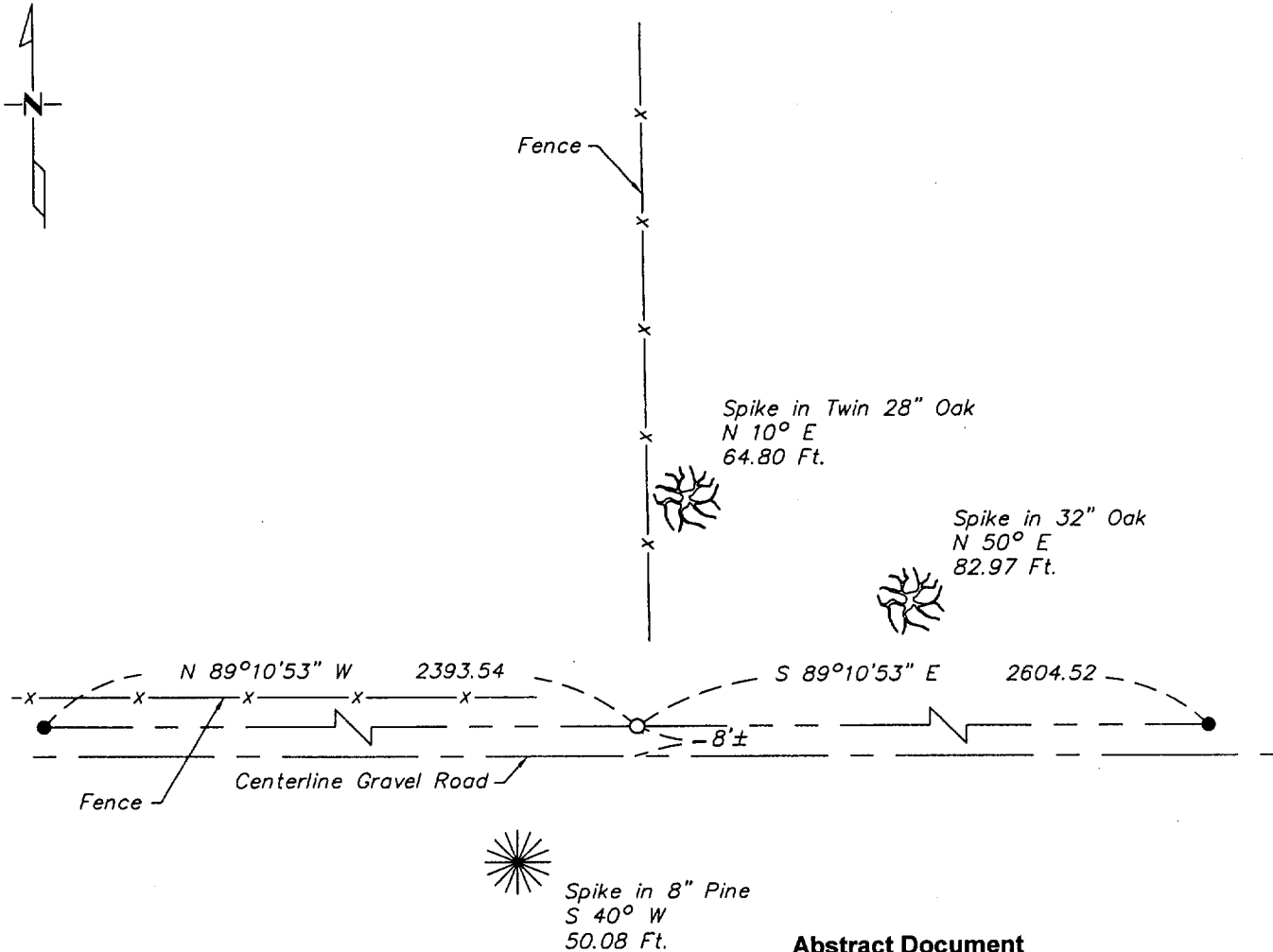
# CERTIFICATE OF LOCATION OF GOVERNMENT CORNER

South Quarter \_\_\_\_\_ Corner of Section 18 , Township 135 , Range 29  
5TH Principal Meridian, State of Minnesota, County of \_\_\_\_\_ Cass

At the corner location shown on the sketch:

- On \_\_\_\_\_ found a \_\_\_\_\_  
DATE
- left monument as found     lowered monument     removed monument (explain)
- On 4/1/03 placed a 1/2" Iron pipe with cap #17253  
DATE

## SKETCH OF REFERENCE TIES



**Abstract Document  
 #465459**

Statement of evidence relative to this corner location is on back of page.

I hereby certify that this document and the data contained herein was prepared by me or under my direct supervision.

Bruce Grinna 4/1/03  
SIGNATURE DATE  
 Registration No. 17253

- Land Surveyor     Professional Engineer  
 County Surveyor     County Engineer

OFFICE OF THE COUNTY RECORDER  
 County of Cass

I hereby certify that this document was filed in the Co. Recorders office at 12:45 PM on the 22nd day of April A.D., 2003

County Recorder Kathryn M. Morby  
 By Debra Cadwell, Deputy  
 DOCUMENT NO. 465459

Statement of Evidence:

South Quarter corner Section 18, T. 135, R. 29.

- 1865 - A post was set during Original Government Survey.
- 1906 - John Curo finds stumps of original Gov't bearing trees (Bk. B p. 128-131)
- 1920 - E.L. Tusler (Bk. C p. 377) sets 1/4 corner 2393.50 feet east of SW corner.
- 2003 - Westwood Professional Services, Inc. performs survey in Sec. 18. The overall distance along the south line of Sec. 18 measures 4998.05 feet compared to 4992 feet by Tusler in 1920 (Bk. C p. 377). Westwood Professional Services, Inc. sets S1/4 at proportion position. This fits fence to north and agrees with distance shown by Tusler from SW corner to S1/4 2393.50 (Tusler) to (2393.54 WPS). Ties are established as shown on face of this certificate.