

CERTIFICATE OF LOCATION OF GOVERNMENT CORNER

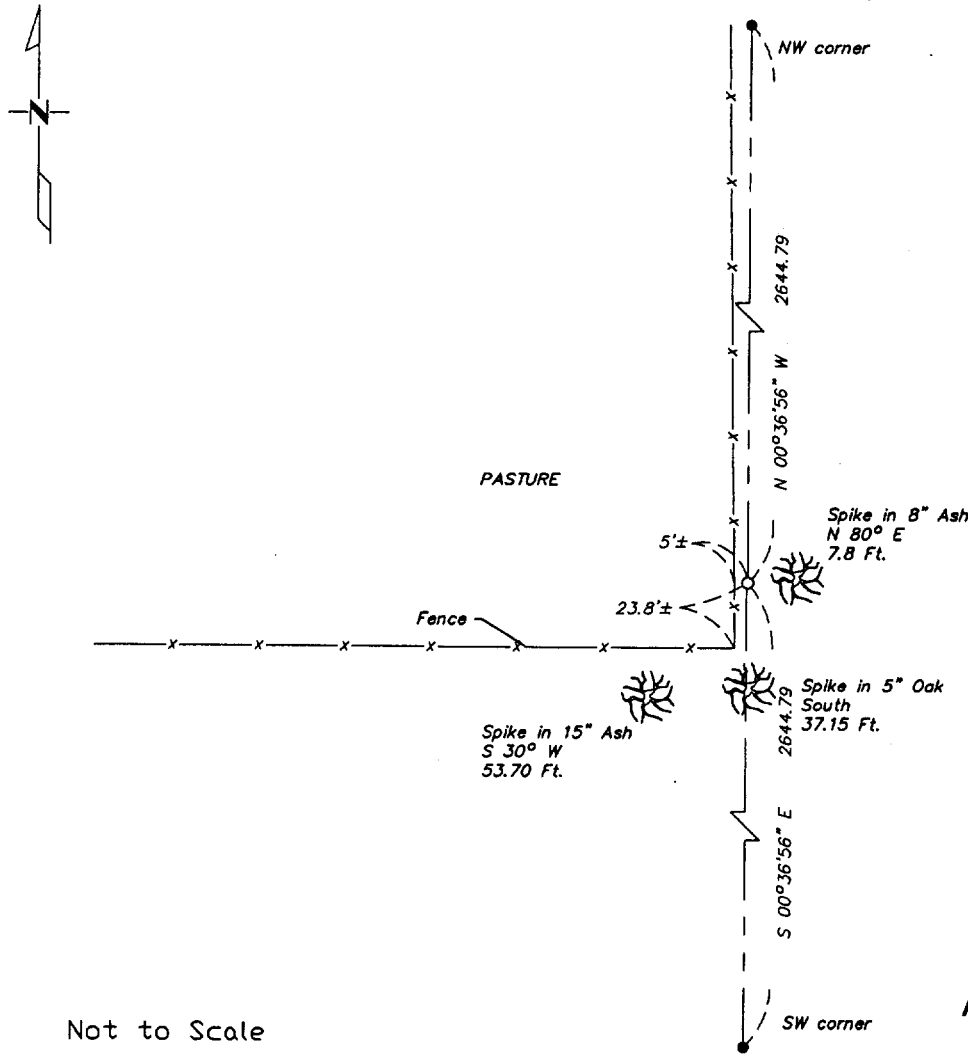
West Quarter _____ Corner of Section 18 , Township 135 , Range 29

5TH Principal Meridian, State of Minnesota, County of _____ Cass _____

At the corner location shown on the sketch:

- On _____ found a _____
DATE _____
- left monument as found lowered monument removed monument (explain)
- On 4/1/03 placed a 1/2" Iron pipe with cap #17253
DATE _____

SKETCH OF REFERENCE TIES



**Abstract Document
#465458**

Statement of evidence relative to this corner location is on back of page.

I hereby certify that this document and the data contained herein was prepared by me or under my direct supervision.

Bruce Grivna 4/17/03
SIGNATURE BRUCE GRIVNA DATE

Registration No. 17253

- Land Surveyor Professional Engineer
- County Surveyor County Engineer

OFFICE OF THE COUNTY RECORDER
County of Cass

I hereby certify that this document was filed in the Co. Recorders office at 12:40 P.M. on the 22nd day of April A.D., 2003

County Recorder Kathryn M. Morby
By Della Cadwell Deputy

DOCUMENT NO. 465458

Statement of Evidence

West Quarter corner Sec. 18, T. 135, R. 29

1858 - A post was set during Original Government Survey.

1920 - E.L. Tusler (Bk C p376) sets W1/4 Sec. 18 at 2647.10 feet south of NW corner Sec. 18

2003 - Westwood Professional Services, Inc. performs survey in Sec. 18. The overall distance along west line Sec. 18 measures 5289.58 feet. It appears Tusler (Bk C p376) measures 5280 in 1920. Westwood Professional Services, Inc. sets W1/4 corner Sec. 18 at 2644.79 feet. In 1920 Tusler established W1/4 corner Sec. 18 at 2647.10 feet. Ties are established by Westwood Professional Services, Inc. as shown on face of this certificate.