

# CERTIFICATE OF LOCATION OF GOVERNMENT CORNER

I hereby certify that this survey, plan, or report was prepared by me or under my direct supervision and that I am a duly Licensed Land Surveyor under the laws of the State of Minnesota.

Alvin J. Jurek

Date: 2/12/03 License No: 17008

OFFICE OF THE COUNTY RECORDER  
County of CASS

I hereby certify that this document was filed in the Office of the County Recorder at 9:10 o'clock A.M. on the 14th day of Feb., 2003 A.D.

County Recorder Kathryn M. Norby

By: John M. Maeda, Deputy  
DOCUMENT NO. 462469

MEANDER (#27) Corner of Section 29, Township 136, Range 29, 5th P.M.

On Jan. 15, 2003 found a 1 1/4" THREADED IRON PIPE 0.5' ABOVE GROUND

left monument as found,  lowered monument,  removed monument (explain)

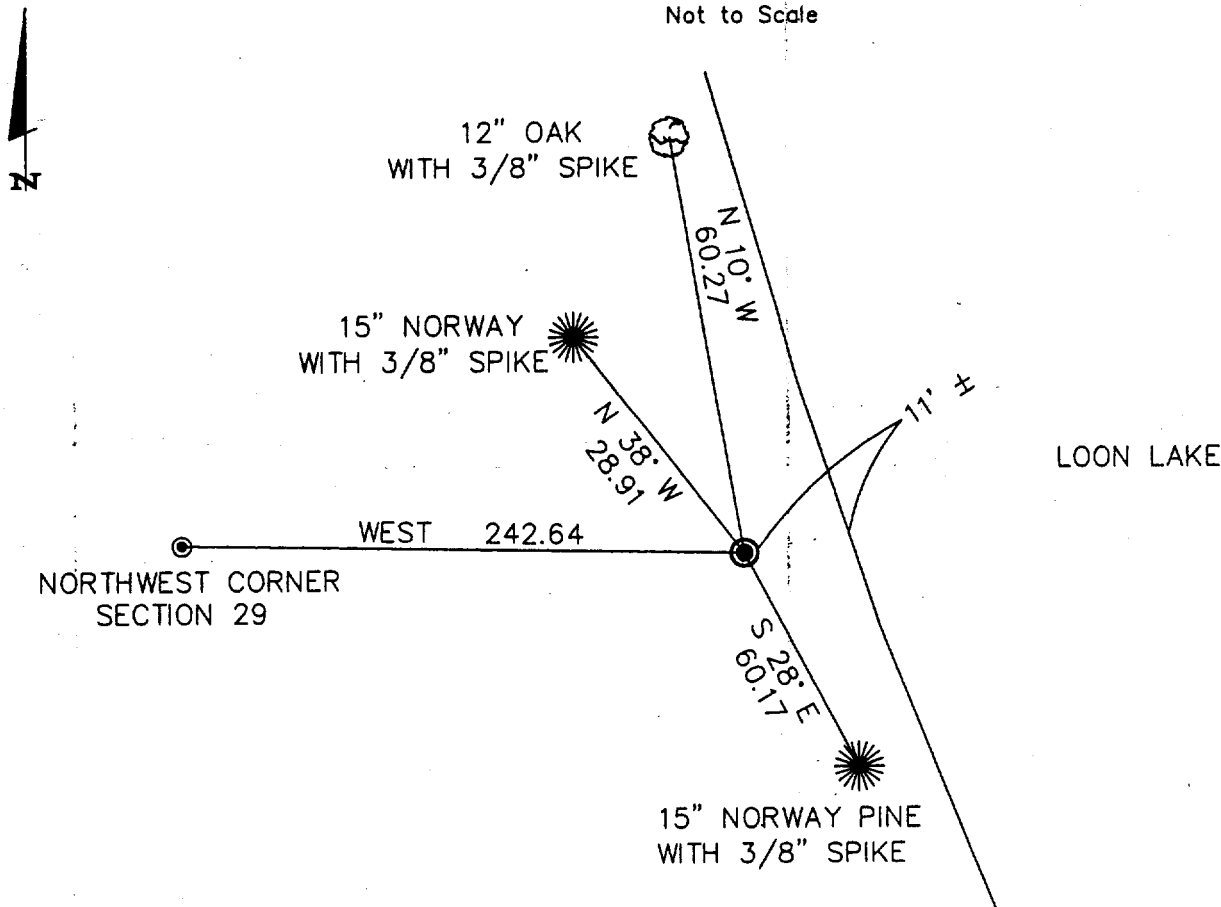
On \_\_\_\_\_ placed a \_\_\_\_\_

decl: 5° E (ASSUMED)

## SKETCH OF REFERENCE TIES

Abstract Document  
#462469

Not to Scale



NOTE: DISTANCES SHOWN AS MEASURED TO SPIKE IN FACE OF TREE.

Statement of evidence for this corner position is on the back of this page

Statement of Evidence

Index No. R-5,6

Meander corner (#27), Section 29, Township 136 North,  
Range 29 West, Cass County, Minnesota

1870 Walker, Allen and Putnam originally established this corner position while subdividing Township 136 North, Range 29 West. A wood post was set to mark the corner with the following witnesses: A 18" N. Pine, South 6 degrees East, 47 links; a 14" N. Pine, North 59 degrees West, 52 links.

1909 County Survey Record Book A, p. 571-576, John W. Curo found the 1870 bearing tree at South 6 degrees East, 47 links and set a stake at corner

1916 County Survey Record Book B, p. 335-338, E. B. Horst also found the 1870 government bearing tree and set 2 x 48" iron pipe as corner with the following witnesses: A 4" N. Pine, North 43 degrees 30 minutes West, 31.30 feet; a 22" N. Pine, South 6 degrees East, 31.02 feet.

2003 A Landecker & Associates, Inc. survey crew found and accepted a 1 1/4" iron pipe as the meander corner.  
Three reference ties were established as shown.

NOTE Landecker and Associates, Inc. and other surveyors have used the existing corners of Section 29 with confidence for over 20 years while performing a variety of surveys.  
The North and West lines of today's monumented Section 29 conform with the plat shown in County Survey Record Book A, p.571-576, dated 1909. The North line of Section 29 as monumented today has a distance of 5359.05 feet, compared to the 1909 survey showing a distance of 5363.5 feet ±. The West line of Section 29 as monumented today has a distance of 5333.76 feet, compared to the 1909 survey showing a distance of 5336.5 feet.