

# CERTIFICATE OF LOCATION OF GOVERNMENT CORNER

I hereby certify that this survey, plan, or report was prepared by me or under my direct supervision and that I am a duly Licensed Land Surveyor under the laws of the State of Minnesota.

**Abstract Document**  
**#461718**

Date: 1/29/03 License No: 21367

OFFICE OF THE COUNTY RECORDER  
County of CASS

I hereby certify that this document was filed in the Office of the County Recorder at 9:10 o'clock A.M. on the 29th day of January, 2003 A.D.

County Recorder Kathryn M. Norby  
By: John E. Naeder, Deputy  
DOCUMENT NO. 461718

WC to MC 5 Corner of Section 4, Township 142, Range 25, 5TH P.M.

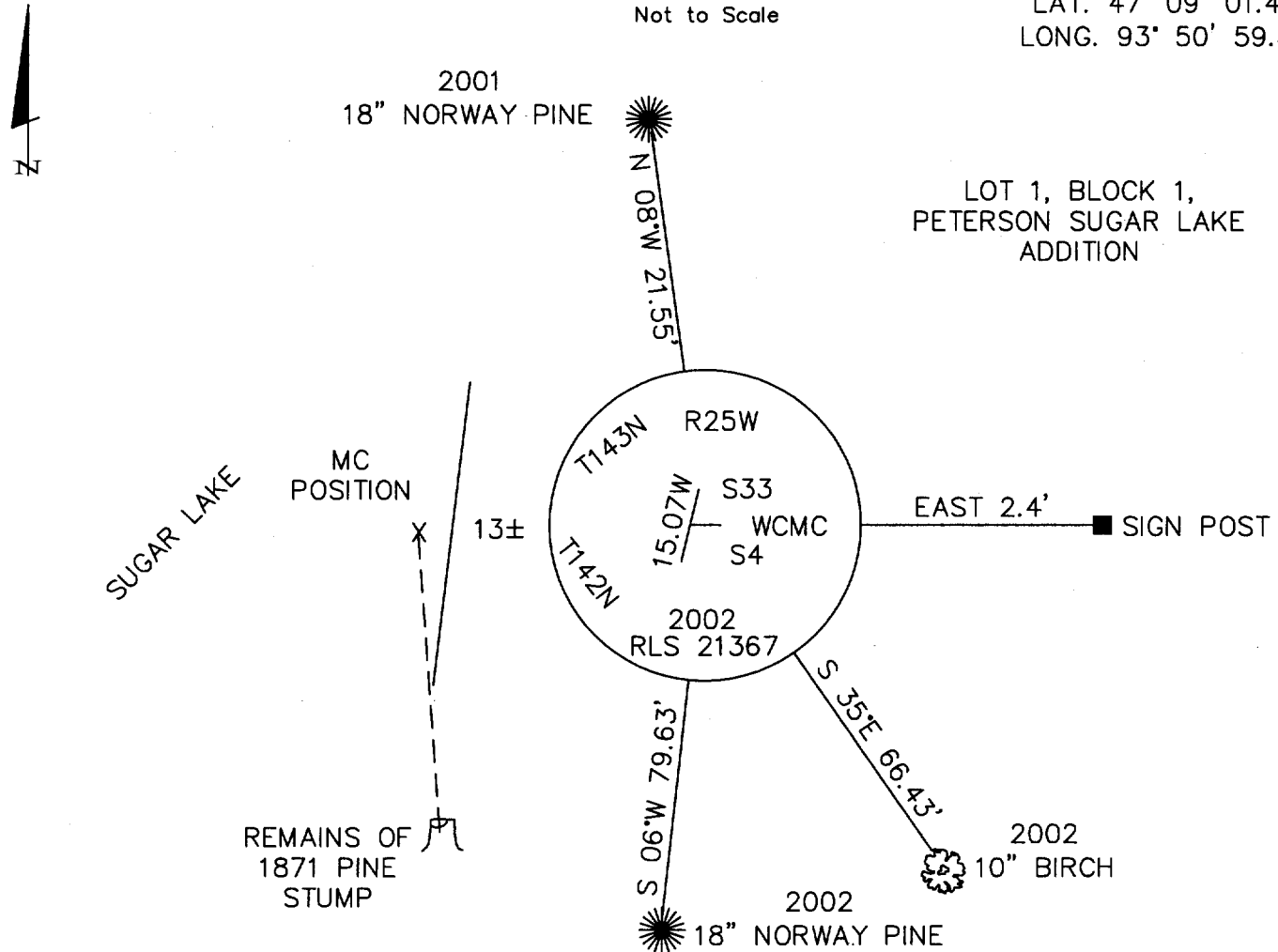
- On \_\_\_\_\_ found a \_\_\_\_\_
- left monument as found,  lowered monument,  removed monument (explain)
- On 10/17/02 placed a 2 1/2" ALUM. POST, 28" LONG, 22" IN THE GROUND, WITH ALUM. CAP

decl: 5° EAST (ASSUMED)

## SKETCH OF REFERENCE TIES

Not to Scale

LAT. 47° 09' 01.4696"  
LONG. 93° 50' 59.8958"



THE BEARING TREES ARE SCRIBED, PAINTED WITH RED ENAMEL AND MARKED WITH BT TAGS.

ALL DISTANCES ARE HORIZONTAL TO NAIL IN BASE OF BEARING TREE.

Statement of evidence for this corner position is on the back of this page

Page 1 of 2 Pages

STATEMENT OF EVIDENCE

Index No. A 10-11

MC #5, Township 142 North, Range 25 West

1871 Walker, Putnum & Allen, U.S. Deputy Surveyors, originally established this corner position while surveying the North line of Township 142 North, Range 25 West. A wood post was set to mark the corner position with the following witnesses: A 18 inch Norway Pine, South 3 degrees East, 16 links.

1976 Dependent Resurvey of the South line of Township 143 North, Range 25 West by Bureau of Land Management found the remains of the original bearing tree and determined the meander corner position. Corner position was not monumented. Copies of this survey are on file in the Cass County Surveyor's Office.

1999 Landecker & Associates, Inc. plat Peterson Sugar Lake Addition. Plat shows iron in place. Recorded in Cass County Registrar of Titles as Doc.#16974.

2002 January 24 Landecker & Associates, Inc. and U.S. Forest Service personnel Mike Hayes and Rob Main locate remains of Pine stump fitting position.

2002 October 17 Landecker & Associates, Inc., survey crew set a 2 ½ inch diameter aluminum post, 28 inches long, 22 inches in the ground with aluminum cap marked as shown at a position 15.07 feet easterly of the true point as established from remains of burnt pine stump as recovered during 1976 Dependent Resurvey and is witnessed by: A 18 inch Norway Pine, North 8 degrees West, 21.55 feet; a 10 inch Birch, South 35 degrees East, 66.43 feet; a 18 inch Norway Pine, South 6 degrees West, 79.63 feet; a steel sign post, East 2.4 feet.