

CERTIFICATE OF LOCATION OF GOVERNMENT CORNER

I hereby certify that this survey, plan, or report was prepared by me or under my direct supervision and that I am a duly Licensed Land Surveyor under the laws of the State of Minnesota.

[Signature]

Date: 1/29/13 License No: 21367

OFFICE OF THE COUNTY RECORDER
County of CASS

I hereby certify that this document was filed in the Office of the County Recorder at 9:00 o'clock A.M. on the 29th day of Jan, 2003 A.D.

County Recorder Kathryn M. Norby
By: John A. Nadeau, Deputy
DOCUMENT NO. 461716

NORTHEAST CORNER Corner of Section 5, Township 142, Range 25, 5TH P.M.

On 9/25/01 found a 2 1/2" ALUM. PIPE WITH ALUM. CAP

left monument as found, lowered monument, removed monument (explain)

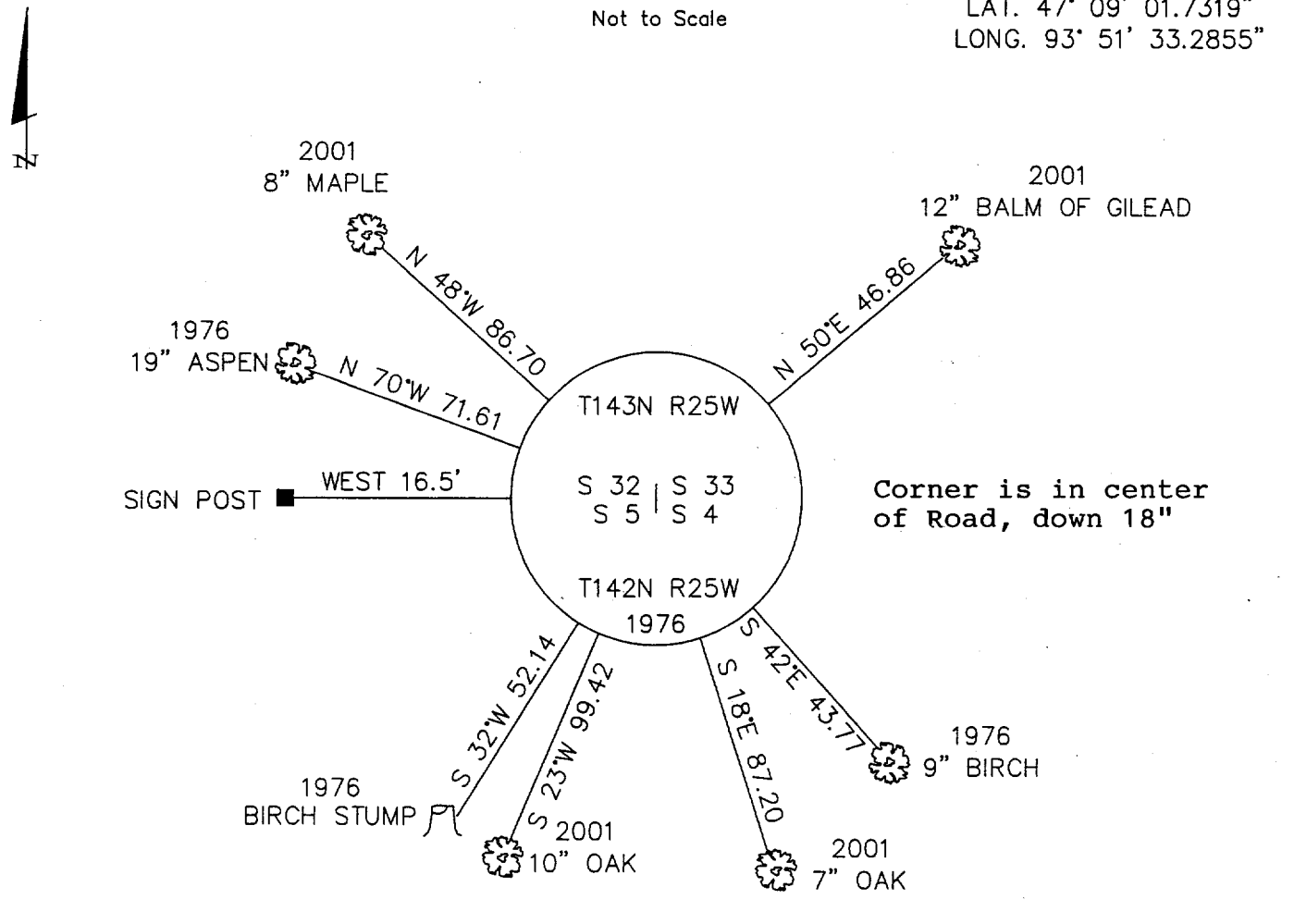
On _____ placed a _____

decl: 5° EAST (ASSUMED)

SKETCH OF REFERENCE TIES

Not to Scale

LAT. 47° 09' 01.7319"
LONG. 93° 51' 33.2855"



THE BEARING TREES ARE SCRIBED, PAINTED WITH RED ENAMEL AND MARKED WITH BT TAGS.

ALL DISTANCES ARE HORIZONTAL TO NAIL IN BASE OF BEARING TREE.

Statement of evidence for this corner position is on the back of this page

STATEMENT OF EVIDENCE

Index No. A - 9

Northeast Corner, Section 5, Township 142
North, Range 25 West, Cass County, Minnesota

1871 Walker, Putnum and Allen, U.S. Deputy Surveyors, originally established this corner position while surveying the North line of Township 142 North, Range 25 West. A wood post was set to mark the corner position with the following witnesses: A 14 inch Spruce, North 80 degrees East, 14 links; a 4 inch Fir, South 69 degrees East, 15 links; a 10 inch Spruce, South 4 degrees West, 10 links; and a 12 inch Aspen, North 20 degrees West, 22 links.

1922 County Survey Record Book "D", p. 52, shows a survey by James Flynn. He found the original corner post and set a 1 ½ inch by 44 inch iron flue pipe and added the following witnesses: A 12 inch Birch, South 84 degrees East, 27.0 feet; a 7 inch Aspen, North 81 degrees West 40.0 feet.

1924 County Survey Record Book "D", p. 132, shows a survey by James Flynn. He found the iron flue pipe and ties as established in 1922.

1933 CCC record on file with the U.S. Forest Service in Cass Lake, shows a corner recovery by Arthur H. Jager. He found an iron pipe in good condition up 30 inches.

1976 Dependent Resurvey of South boundary of Township 143 North, Range 25 West, by U.S. Bureau of Land Management (BLM). They found an iron pipe 20 inches long, ¾ inch in diameter and accepted it as the best available evidence of the original corner position. At the corner point set an aluminum post, 28 inches long, 2 ½ inches diameter, with the following witnesses: A 8 inch Balsam Fir, North 56 degrees East, 71 links; a 6 inch White Birch, South 38 degrees East, 66 links; a 5 inch Birch, South 34 degrees West, 79 links; a 20 inch Aspen, North 71 degrees West, 108 ½ links. Copies of this survey are on file in the Cass County Surveyor's Office.

1978 Gary H. Stevenson, RLS #12684 found aluminum pipe in place and accept as corner. Notes are on file at Landecker & Associates, Inc. Walker Office.

1983 U.S. Forest Service Survey Technician Glenn P. Kosenko found 2 ½ inch aluminum monument with 3 ¼ inch diameter aluminum cap. Notes on file with the U.S. Forest Service in Cass Lake.

2001 September 25, a Landecker and Associates, Inc. survey crew found a 2 ½ inch aluminum pipe with aluminum cap as shown on the BLM dependent resurvey and accepts the corner as a perpetuation of the original corner from which the following accessories: A 7 inch Oak, North 18 degrees West, 87.20 feet; a 10 inch Oak, North 23 degrees East, 99.42 feet; a 8 inch Maple, South 48 degrees East, 86.70 feet; a 12 inch Balm of Gilead, North 50 degrees East, 46.86 feet; a 9 inch White Birch, South 42 degrees East, 43.77 feet; a Birch Stump, South 32 degrees West, 52.14 feet, a 19 inch Aspen, North 70 degrees West, 71.61 feet.