

# CERTIFICATE OF LOCATION OF GOVERNMENT CORNER

I hereby certify that this survey, plan, or report was prepared by me or under my direct supervision and that I am a duly Licensed Land Surveyor under the laws of the State of Minnesota.

*Terry L. Freeman*

TERRY L. FREEMAN

Date: 11/1/01 License No. 21367

OFFICE OF THE COUNTY RECORDER  
County of CASS

I hereby certify that this document was filed in the Office of the County Recorder at 2:45 o'clock P.M. on the 1st day of Nov., 20 01 A.D.

County Recorder Kathryn M. Norby

By: John E. Maeder, Deputy  
DOCUMENT NO. 442511

MC NO. 18 Corner of Section 23/26, Township 141, Range 31, 5TH P.M.

On 7/5/01 found a 2" IRON PIPE UP 32"

left monument as found,  lowered monument,  removed monument (explain)

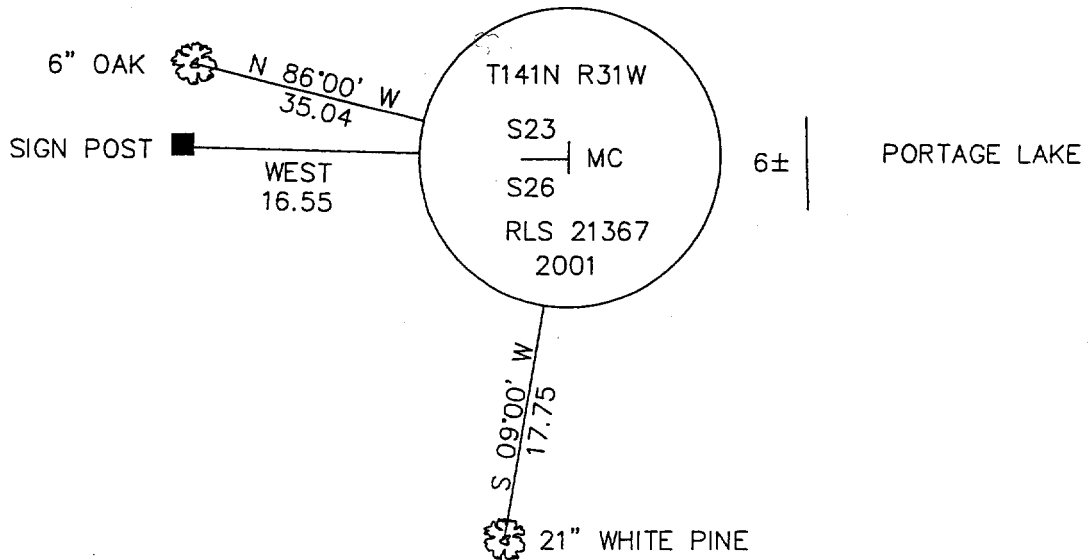
On 9/13/01 placed a 3" ALUM. CAP ON EXISTING PIPE MARKED AS SHOWN

decl: 5° EAST (ASSUMED)

## SKETCH OF REFERENCE TIES

Not to Scale

LAT. 47° 00' 47.6666"  
LONG. 94° 33' 22.1860"  
NAD 83 (1996)



THE BEARING TREES ARE SCRIBED, PAINTED WITH RED ENAMEL AND MARKED WITH BT TAGS.

ALL DISTANCES ARE HORIZONTAL TO NAIL IN BASE OF BEARING TREE.

Statement of evidence for this corner position is on the back of this page

Meander corner No. 18, Section 23, Township 141 North,  
Range 31 West, Cass County, Minnesota  
West Shore of Portage Lake

1873 P. H. Conger, U.S. Deputy Surveyor, originally established this corner position while subdividing Township 141 North, Range 31 West. A wood post was set to mark the corner position with the following witnesses: A 14" Jack Pine, N 40 degrees W, 14 lks; a 8" Poplar, S 21 degrees W, 10 lks. Notes are filed in the Secretary of State's office with a copy in the County Surveyor's office.

1920 County Survey Record Book "C", page 460, shows a survey by E. B. Horst, Deputy County Surveyor. He found 2" iron monument and accepts as a perpetuation of the original corner position.

1922 County Resurvey Plat by E. B. Horst shows a 2" x 48" iron monument. Recorded as Document Number 69325

1961 R. H. McDonald, U.S. Forest Surveyor, found a 2" iron pipe up 32" from which a Jack Pine windfall with blaze bears N 42 degrees W, 9.3 feet. Notes on file in Book 1 of 5, Township 141 North, Range 31 West, page 33 in U.S.F.S. Supervisor's office in Cass Lake.

1980 USFS personnel, Brama, Hare and Northbird, found 2" I.P. up 2.0 feet on shore of Portage Lake. They placed a F.S.L.P. on 16" White Pine S 9 degrees W, 17.75 feet and sign post with both signs west 16.55 feet. Placed rock mound around monument. Notes on file in Book 1 of 5, Township 141 North, Range 31 West, page 33 in U.S.F.S. Supervisor's office in Cass Lake.

2001 July, a Landecker & Associates, Inc. survey crew found a 2" iron pipe up 32" and accepts the corner as perpetuation of the original corner position from which the following witnesses: A 6" Oak, N 66 degrees W, 35.04 feet; a 21" White Pine, S 9 degrees W, 17.75 feet; a stamped cap was attached.