

# CERTIFICATE OF LOCATION OF GOVERNMENT CORNER

I hereby certify that this survey, plan, or report was prepared by me or under my direct supervision and that I am a duly Licensed Land Surveyor under the laws of the State of Minnesota.

*Terry L. Freeman*

TERRY L. FREEMAN

Date: 11/1/01 License No: 21367

OFFICE OF THE COUNTY RECORDER  
County of CASS

I hereby certify that this document was filed in the Office of the County Recorder at 2:20 o'clock P.M. on the 1st day of Nov., 20 01 A.D.

County Recorder Kathryn M. Norby

By: John F. Maeder, Deputy  
DOCUMENT NO. 442506

NORTHEAST Corner of Section 23, Township 141, Range 31, 5TH P.M.

On 7/5/01 found a 6" DIA. CYLINDRICAL CONCRETE MONUMENT WITH 3" BRONZE TABLET, DOWN 6"

left monument as found,  lowered monument,  removed monument (explain)

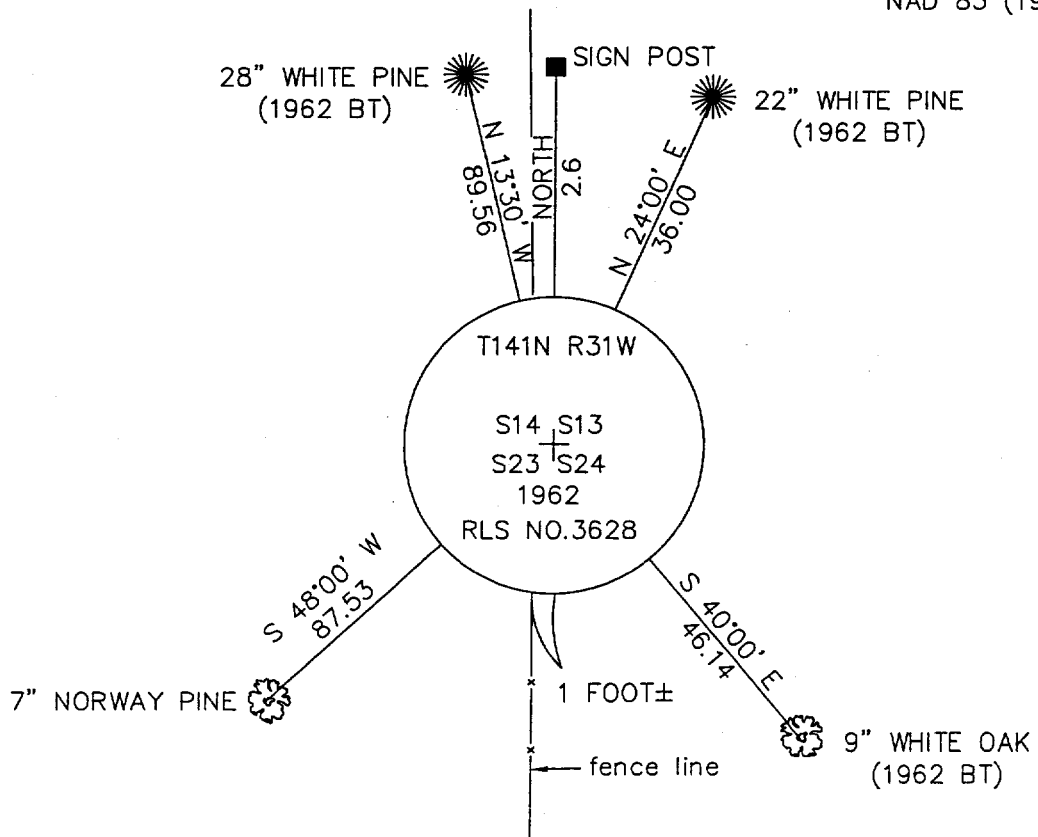
On \_\_\_\_\_ placed a \_\_\_\_\_

decl: 5° E

## SKETCH OF REFERENCE TIES

Not to Scale

LAT. 47° 01' 27.1058"  
LONG. 94° 33' 20.9269"  
NAD 83 (1996)



THE BEARING TREES ARE SCRIBED, PAINTED WITH RED ENAMEL AND MARKED WITH BT TAGS.

ALL DISTANCES ARE HORIZONTAL TO NAIL IN BASE OF BEARING TREE.

Statement of evidence for this corner position is on the back of this page

STATEMENT OF EVIDENCE

Index No. N - 21

Northeast corner, Section 23, Township 141 North, Range 31 West, Cass County, Minnesota

1873 P. H. Conger, U.S. Deputy Surveyor, originally established this corner position while subdividing Township 141 North, Range 31 West. A wood post was set to mark the corner position with the following witnesses: A 12" Poplar, North 48 degrees East, 31 links; an 8" Poplar, North 42 degrees West, 34 links; a 14" Poplar, South 58 degrees West, 16 links; an 8" Oak, South 48 degrees East, 38 links. Notes are filed in the Secretary of State's office, with a copy in the County Surveyor's office.

1907 County Survey Record Book "B", p. 339-344 shows a survey by John W. Curo. He found old government BT: An 8" Poplar, North 42 degrees West, 34 links.

1911 County Survey Record Book "A", p. 386-387 shows a survey by John W. Curo, County Surveyor, and Harry S. Todd, Deputy Surveyor. They set a 2" x 48" iron monument from original government BT's.

1917 Albinus N. Kimmell, GLO Cadastral Engineer, found a 2" iron post, 4" above ground with brass cap with the following original witnesses: A 10" Poplar, (fallen) North 42 degrees West, 34 links; an Oak stump hole, South 48 degrees East, 38 links. Notes on file at the Secretary of State's office with a copy in the Cass County Surveyor's office.

1962 September, Peter J. Meyer, RLS No. 3628, found a 2" x 48" iron monument set by Cass County Surveyor, John Curo, in 1911 buried under an old road. Set a 6" dia., 24" long cylindrical concrete monument capped with a 3" dia. Bronze tablet down 4" from which the following witnesses: An 18" White Pine, North 13 1/2 degrees West, 89.4 feet, MKD S 14 BT; a 14" White Pine, North 24 degrees East 36.0 feet, MKD S 13 BT; a 6" White Oak, South 40 degrees East, 46.1 feet, MKD S 24 BT; a 10" White Oak, South 18 degrees West, 70.8 feet, MKD S 23 BT; a 6' steel sign post with signs, North 14.4 feet. He recorded an Affidavit as to location of Government corner on September 16, 1963.

2001 On July 3, a Landecker & Associates, Inc. survey crew found the concrete monument with brass cap down 6" on east side of North-South fence line and the 1962 BT's as indicated on front of this Certificate. Landecker & Associates, Inc. accepts the monument as a perpetuation of the original corner position.