

# CERTIFICATE OF LOCATION OF GOVERNMENT CORNER

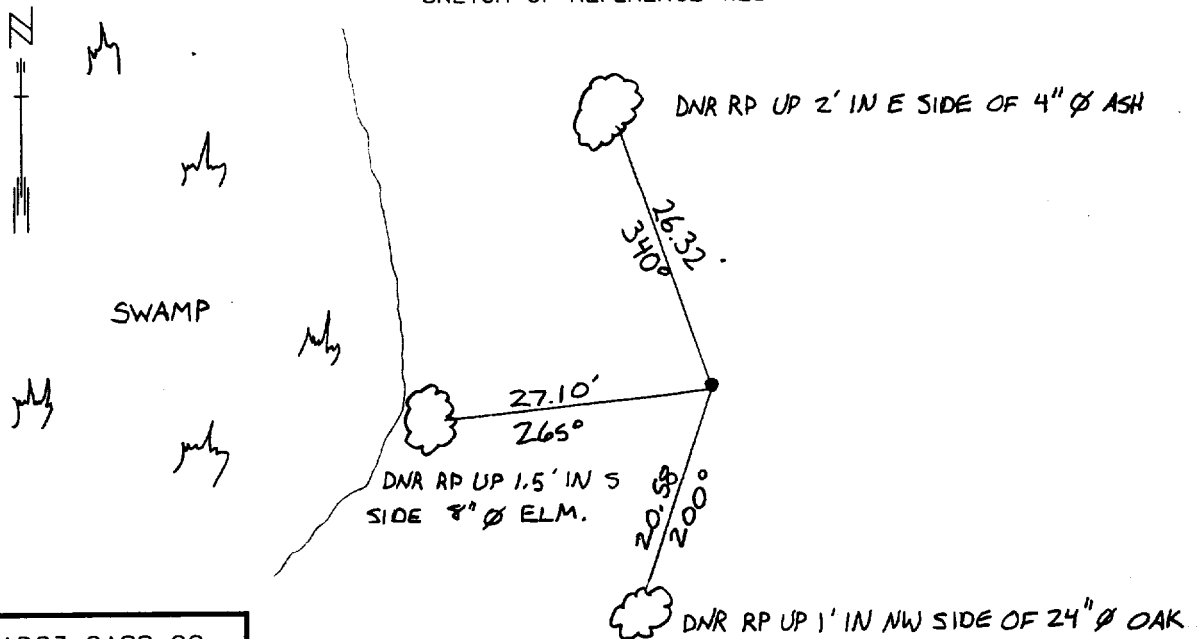
NORTHEAST Corner of Section 26, Township 135 N, Range 31 W, 5TH P.M.

STATE OF MINNESOTA, County of CASS

At the corner location shown on the sketch:

- On 6-15-98 found the remains of all 4 Original Bearing Trees  
DATE
- left monument as found,  lowered monument,  removed monument (explain)
- On 6-15-98 Placed a DSM UP 0.2' WITH RIBSTICK 25' SW OF EDGE SWAMP.  
DATE

SKETCH OF REFERENCE TIES



NAD83 CASS CO. COORDINATES

N 220,024.84

E 481,473.78

Abstract Document #441855

AZIMUTHS OBSERVED WITH COMPASS

Statement of evidence relative to this corner location is on back of page.

DATE FILE WMA01198

I hereby certify that this document and the data contained herein was prepared by me or under my direct supervision.

John D. Walker 5/31/01  
SIGNATURE DATE

License Number 16098

- Land Surveyor,  Professional Engineer
- County Surveyor,  County Engineer

OFFICE OF THE COUNTY RECORDER  
County of Cass

I hereby certify that this document was filed in the Co. recorders office at 2:50 P.M. on the 16th day of Oct. A.D., 2001

County Recorder Kathryn M. Nozly  
By John F. Maeder, Deputy  
DOCUMENT NO. 441855

**Northeast Corner Section 26, Township 135 North, Range 31 West**

The Department of Natural Resources, Bureau of Engineering contacted the following offices for information regarding this corner:

MN Secretary of State  
Cass County Surveyor  
Widseth, Smith and Nolting of Brainerd  
Landecker and Associates of Pequot Lakes  
Landecker and Associates of Walker  
Central Minnesota Surveying

1870 The US General Land Office field notes, on file in the Secretary of State's Office, show this corner to be marked with a post and the following bearing trees were marked:

W. Pine 24" N 74° E 52 links (34.32')  
W. Pine 22" S 11° E 18 links (11.88')  
W. Pine 22" S 38° W 14 links (9.24)  
W. Pine 20" N 4 ½° W 13 links(8.58')

1998 The DNR survey crew searched for evidence of the corner and found evidence of all four original bearing tree stumps. A MNDNR Survey Marker was set at the intersection of GLO distances from the stumps to mark the original location of the corner.

For more information on our survey in this area please contact MN DNR, Bureau of Engineering, Survey Section, 1601 Minnesota Drive, Brainerd, MN 56425