

CERTIFICATE OF LOCATION OF GOVERNMENT CORNER

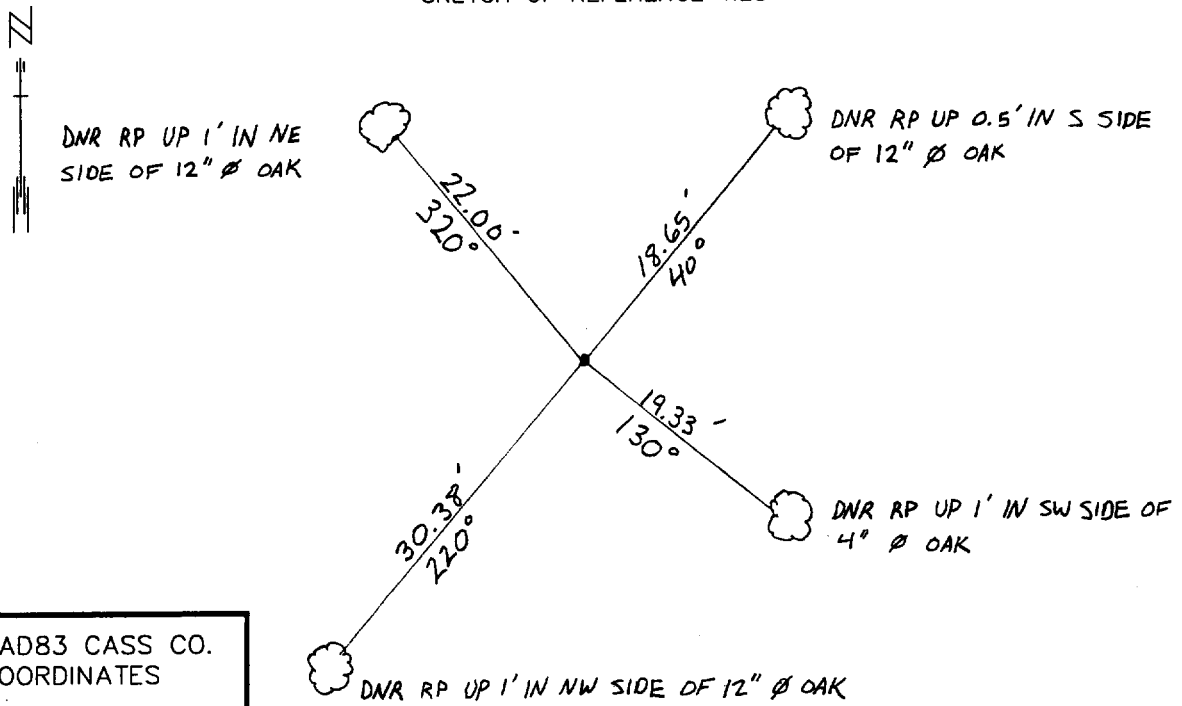
NORTHEAST Corner of Section 27, Township 135 N, Range 31 W, 5TH P.M.

STATE OF MINNESOTA, County of CASS

At the corner location shown on the sketch:

- On _____ found a _____
DATE
- left monument as found, lowered monument, removed monument (explain)
- On 7-8-98 Placed a DSM UP 0.3' WITH LATH IN WOODS.
DATE

SKETCH OF REFERENCE TIES



NAD83 CASS CO.
COORDINATES

N 220,036.88
E 476,196.66

Abstract Document #441854

AZIMUTHS OBSERVED WITH COMPASS

Statement of evidence relative to this corner location is on back of page. DATE FILE WMA01198

I hereby certify that this document and the data contained herein was prepared by me or under my direct supervision.

John D. Walker 5/3/01
SIGNATURE DATE

License Number 16098

Land Surveyor, Professional Engineer
 County Surveyor, County Engineer

OFFICE OF THE COUNTY RECORDER
County of Cass

I hereby certify that this document was filed in the Co. recorders office at 2:48 P.M. on the 16th day of Oct. A.D., 2001

County Recorder Kathryn M. Worley
By John F. Maeder, Deputy
DOCUMENT NO. 441854

Northeast Corner Section 27, Township 135 North, Range 31 West

The Department of Natural Resources, Bureau of Engineering contacted the following offices for information regarding this corner:

MN Secretary of State
Cass County Surveyor
Widseth, Smith and Nolting of Brainerd
Landecker and Associates of Pequot Lakes
Landecker and Associates of Walker
Central Minnesota Surveying

1870 The US General Land Office field notes, on file in the Secretary of State's Office, show this corner to be marked with a post and the following bearing trees were marked:

Balm of Gilead 6" N 72° W 10 links
Balm of Gilead 10" N 17° E 13 links
Aspen 8" S 52 ½° W 18 links
Blk. Oak 8" S 22° E 17 links

1998 The DNR survey crew searched for evidence of the corner. Nothing was found. The section corners to the north, south, east and west were found and a double proportioned position was computed and searched for without results. A MNDNR Survey Marker was set to mark the double proportioned location of the corner. The corners used for the double proportion are:

Northeast Corner Section 26 - S 89°52'10"E 5277.14'
Southeast Corner Section 27 - S 00°41'38"E 5315.72'
Northeast Corner Section 28 - N 89°41'38"W 5242.86'
Northeast Corner Section 22 - N 00°22'41"W 5315.72'

For more information on our survey in this area please contact MN DNR, Bureau of Engineering, Survey Section, 1601 Minnesota Drive, Brainerd, MN 56425