

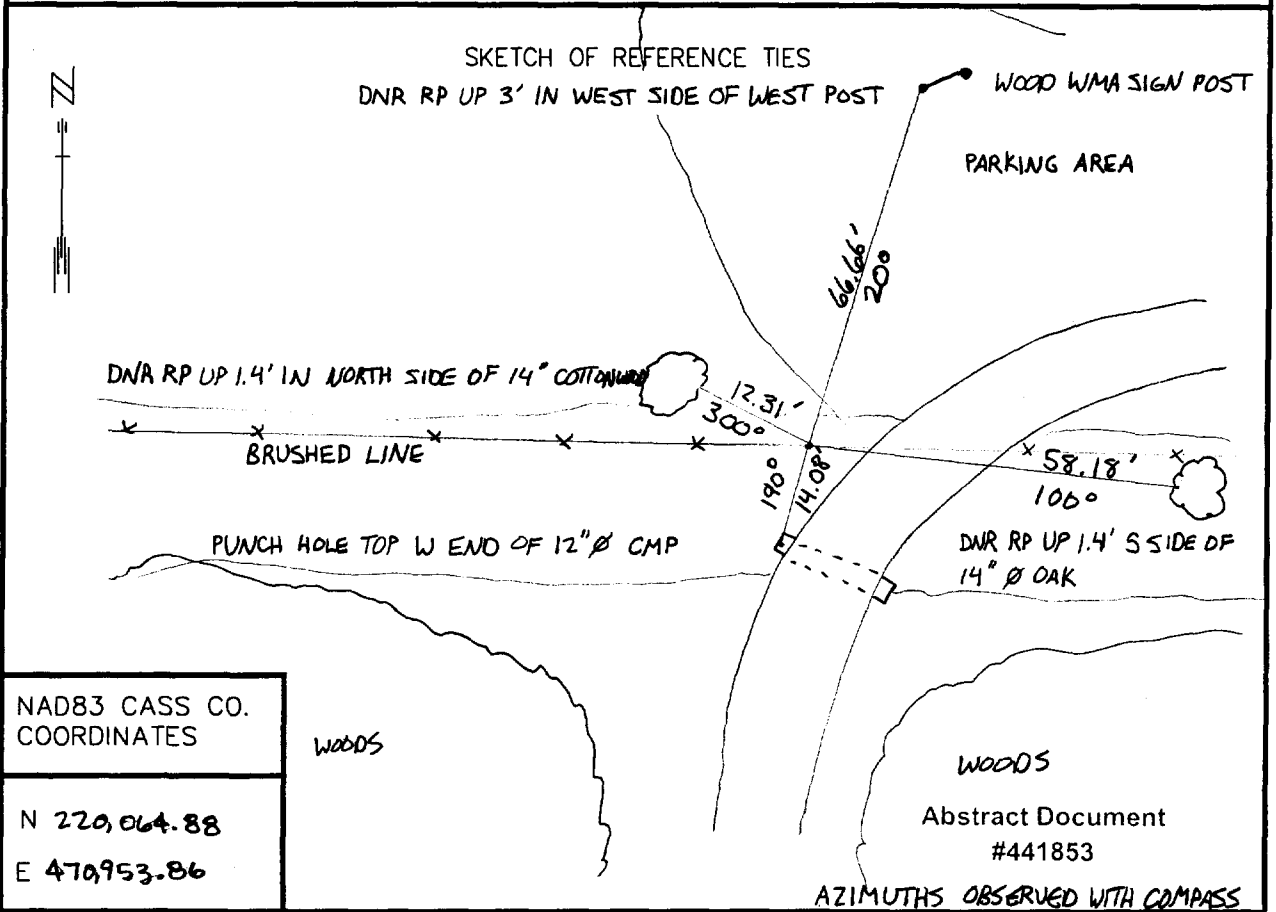
CERTIFICATE OF LOCATION OF GOVERNMENT CORNER

NORTHEAST Corner of Section 28, Township 134 N, Range 31 W, 5TH P.M.

STATE OF MINNESOTA, County of CASS

At the corner location shown on the sketch:

- On _____ found a _____
DATE
- left monument as found, lowered monument, removed monument (explain)
- On 6-3-98 Placed a DSM FLUSH ON OLD DOWN E-W FENCE, ON EXT E & D
DATE GRAVEL ROAD SOUTH.



NAD83 CASS CO. COORDINATES

N 220,064.88

E 470,953.86

Statement of evidence relative to this corner location is on back of page.

DATE
FILE WMA01198

I hereby certify that this document and the data contained herein was prepared by me or under my direct supervision.

John D. Walker 5/31/01
SIGNATURE DATE

License Number 16098

- Land Surveyor, Professional Engineer
 County Surveyor, County Engineer

OFFICE OF THE COUNTY RECORDER
County of Cass

I hereby certify that this document was filed in the Co. recorders office at 2:46 P.M. on the 16th day of Oct. A.D., 1920

County Recorder Kathryn M. Norby
By John F. Naeden, Deputy
DOCUMENT NO. 441853

Northeast Corner Section 28, Township 135 North, Range 31 West

The Department of Natural Resources, Bureau of Engineering contacted the following offices for information regarding this corner:

MN Secretary of State
Cass County Surveyor
Widseth, Smith and Nolting of Brainerd
Landecker and Associates of Pequot Lakes
Landecker and Associates of Walker
Central Minnesota Surveying

1870 The US General Land Office field notes, on file in the Secretary of State's Office, show this corner to be marked with a post and the following bearing trees were marked:

Elm 14" S 22 ° E 75 links (49.5')
Elm 10" N 63° W 65 links (42.9')
Elm 14" N 80° E 21 links (13.86')
Maple 8" S 64° W 76 links (50.16')

1998 The DNR survey crew searched for evidence of the corner. An old partially down east - west fence was found. A spike was set in line with the old fence and at the extension of an old road to the south. The east quarter corner of section 28 and the centerline of the road and a fence line west at the approximate east sixteenth corner of the northeast quarter of section 28 were located. The split between the east quarter corner and the spike fell on the sixteenth fence line west. The spike was removed and a MNDNR Survey Marker was set to mark the obliterated location of the corner.

Northeast Corner Section 27 - S 89°41'38"E 5242.86'
Northeast Corner Section 29 - N 89°47'35"W 5333.76'
Northeast Corner Section 21 - N 00°44'56"W 5352.73'
East Quarter Corner Section 28 - S 00°28'17"W 2643.08'

For more information on our survey in this area please contact MN DNR, Bureau of Engineering, Survey Section, 1601 Minnesota Drive, Brainerd, MN 56425