

CERTIFICATE OF LOCATION OF GOVERNMENT CORNER

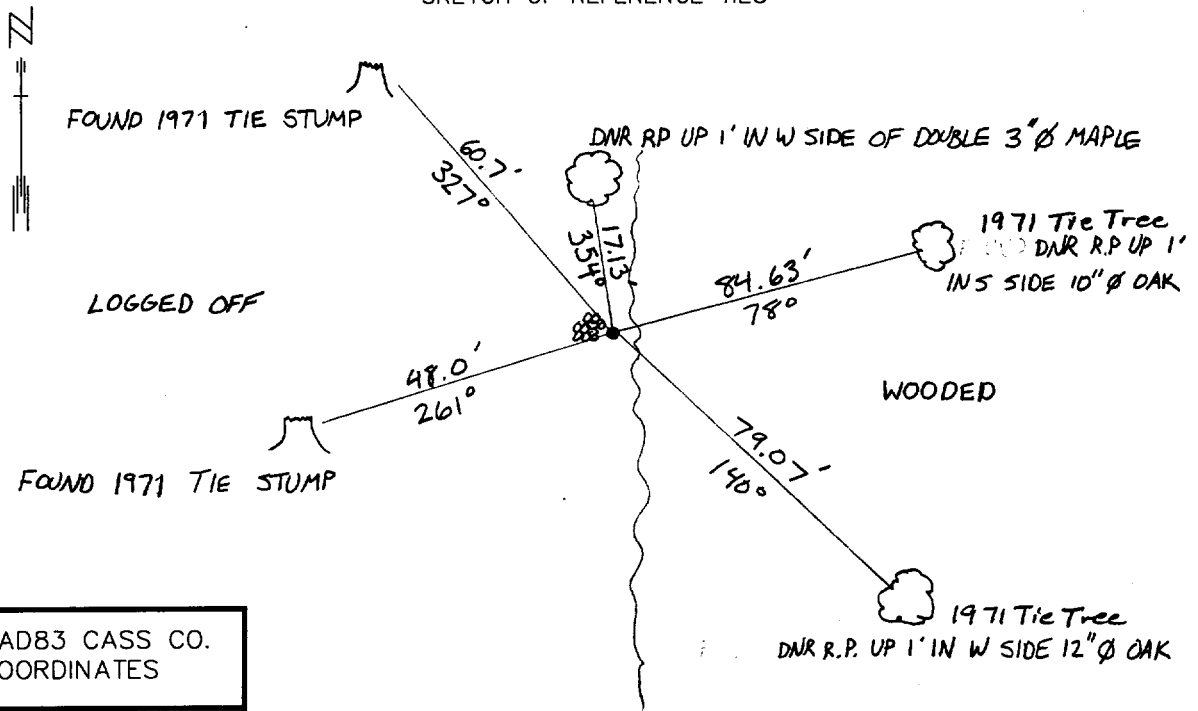
NORTHEAST Corner of Section 22, Township 134 N, Range 31 W, 5TH P.M.

STATE OF MINNESOTA, County of CASS

At the corner location shown on the sketch:

- On 3/19/98 found a mound of Stone and 4 tie Trees from 1971 Survey
by Donald Coulter
 left monument as found, lowered monument, removed monument (explain)
- On 3-19-98 Placed a DSM UP 0.2' FROM TIES AT E EDGE OF LOGGED AREA, 73'S
6' WIDE E-W TRAIL ROAD. 2' E OF CLUSTER OF STAKES

SKETCH OF REFERENCE TIES



NAD83 CASS CO. COORDINATES

N 225,352.49

E 476,161.59

Abstract Document #441845

AZIMUTHS OBSERVED WITH COMPASS

Statement of evidence relative to this corner location is on back of page.

DATE FILE WMA01198

I hereby certify that this document and the data contained herein was prepared by me or under

my direct supervision.
John D. Walker 5/31/01
SIGNATURE DATE

License Number 16098

- Land Surveyor, Professional Engineer
- County Surveyor, County Engineer

OFFICE OF THE COUNTY RECORDER

County of Cass

I hereby certify that this document was filed in the Co. recorders office at 2:30 P .M. on the 10th day of Oct. A.D., 2001

County Recorder Kathryn M. Norby
By John E. Maeder, Deputy
DOCUMENT NO. 441845

Northeast Corner Section 22, Township 135 North, Range 31 West

The Department of Natural Resources, Bureau of Engineering contacted the following offices for information regarding this corner:

MN Secretary of State
Cass County Surveyor
Widseth, Smith and Nolting of Brainerd
Landecker and Associates of Pequot Lakes
Landecker and Associates of Walker
Central Minnesota Surveying

1870 The US General Land Office field notes, on file in the Secretary of State's Office, show this corner to be marked with a post and the following bearing trees were marked:

Aspen 7" S 57° E 9 links (5.94')
Aspen 8" S 31° W 4 links (2.64')
Aspen 8" N 38° E 15 links (9.90')
Aspen 9" N 63° W 13 links (8.58')

1920 Lincoln Mackey surveyed the Rainbow Trail through this township. He found three popple tie trees and set a 2" x 48" iron monument and a 3' high mound of stone 2' west of the corner. He measured 5237.1' to the next section corner east and 5278' to the next section corner west.

1971 Donald Coulter worked on sections 10 - 15 for a plat of Wilderness Park. He found a 2" iron pipe and took ties to 4 red oak trees. He measured 5226.59' to the next section corner east and 5278.78' to the next section corner west.

1998 The DNR survey crew found the 4 tie trees taken by Coulter and the stone pile set by Mackey. A MNDNR Survey Marker was set from the ties, up 3" to mark the original location of the corner. The distance to the northeast corner of section 23 is 5227.44' and to the northeast corner of section 21 is 5278.08'.

For more information on our survey in this area please contact MN DNR, Bureau of Engineering, Survey Section, 1601 Minnesota Drive, Brainerd, MN 56425