

CERTIFICATE OF LOCATION OF GOVERNMENT CORNER

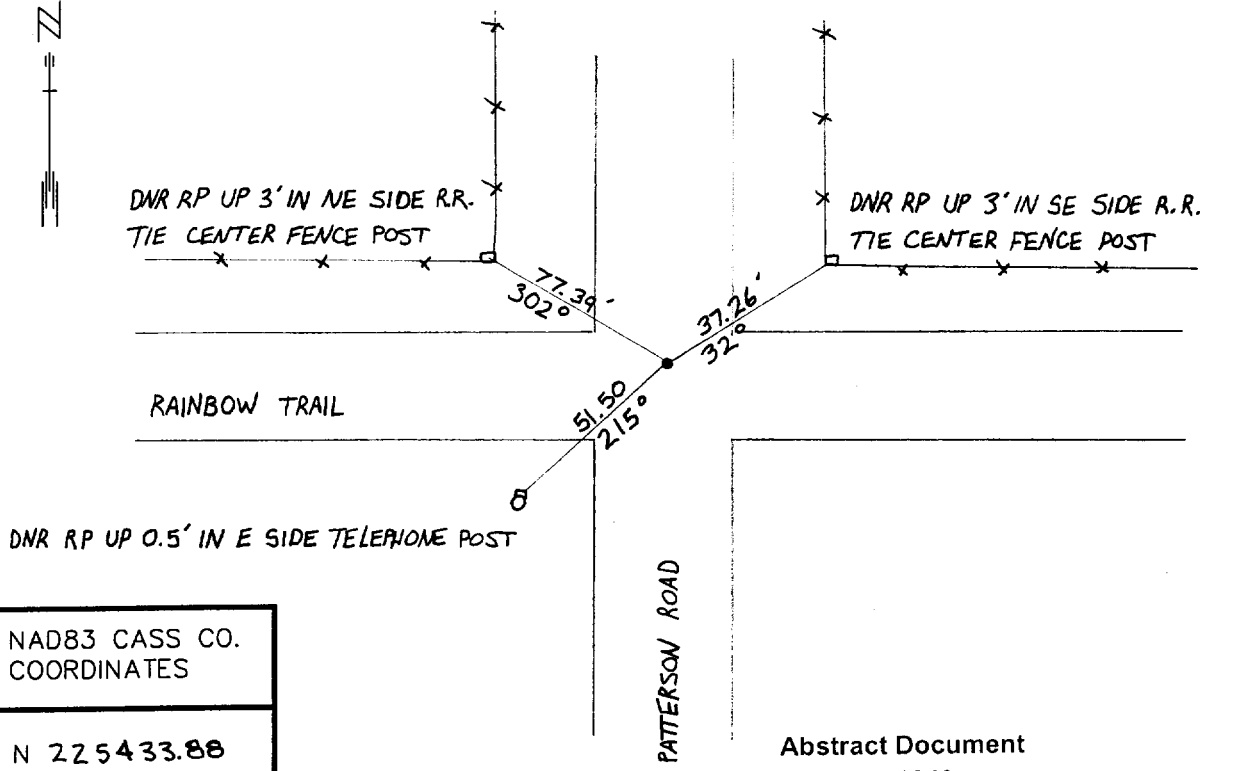
NORTHEAST Corner of Section 20, Township 135 N, Range 31 W, 5TH P.M.

STATE OF MINNESOTA, County of CASS

At the corner location shown on the sketch:

- On 4-9-98 found a 1" Ø IRON PIPE DOWN 24" ON E N-S GRAVEL ROAD AND
DATE 4' N OF E E-W GRAVEL ROAD. SET DSM IN PIPE TOP, DOWN 0.3'
 - left monument as found,
 - lowered monument,
 - removed monument (explain)
- On _____ Placed a _____
DATE

SKETCH OF REFERENCE TIES



NAD83 CASS CO. COORDINATES

N 225433.88

E 465559.07

Abstract Document #441842

AZIMUTHS OBSERVED WITH COMPASS

Statement of evidence relative to this corner location is on back of page.

DATE FILE WMA01198

I hereby certify that this document and the data contained herein was prepared by me or under my direct supervision.

John D. Walker 5/31/01
SIGNATURE DATE

- License Number 16098
- Land Surveyor, Professional Engineer
 - County Surveyor, County Engineer

OFFICE OF THE COUNTY RECORDER
County of Cass

I hereby certify that this document was filed in the Co. recorders office at 2:24 P.M. on the 16th day of Oct A.D., 2001

County Recorder Kathryn M. Jarley
By John E. Maeder, Deputy
DOCUMENT NO. 441842

Northeast Corner Section 20, Township 135 North, Range 31 West

The Department of Natural Resources, Bureau of Engineering contacted the following offices for information regarding this corner:

MN Secretary of State
 Cass County Surveyor
 Widseth, Smith and Nolting of Brainerd
 Landecker and Associates of Pequot Lakes
 Landecker and Associates of Walker
 Central Minnesota Surveying

- 1870 The US General Land Office field notes, on file in the Secretary of State's Office, show this corner to be marked with a post and the following bearing trees were marked:
 Oak 14" N 42 ½ ° W 33 links (21.78')
 Oak 10" S 76° E 30 links (19.8')
 Oak 8" S 21 ½ ° W 16 links (10.56')
 Oak 9" N 50° E 28 links (18.48')
- 1920 Lincoln Mackey surveyed the Rainbow Trail through this township. He found a 6" x 36" wood post. He set an iron monument and took a tie to a 10" Oak S 54° E 55.2'. He shows a measurement of 5285.7' to the Northwest Corner of Section 20 and 5329.0' to the Northeast Corner of Section 21.
- 1930 P.O. Bean, surveyor found a pipe for this corner and ran north between sections 16 and 17. He measured each half mile at 2686' and states he found the government section corners. This can be found in Curo's book #185, page 104. On pages 105 and 106 are some more notes, possibly by John M. Greene, showing that he measured the distance to the section corner north at 5363.3' when he proportioned in the Northeast Corner Section 17.
- 1998 The DNR survey crew found 1" iron pipe, down 24" in the centerline of a north-south gravel road and 4' north of the centerline of an east - west gravel road. A MNDNR Survey Marker was set in the top of the pipe, down 4". The monument was located by GPS. The section corners east, west and south measure:
 Northeast Corner Section 21 - S 89°49'12"E 5324.86'
 Northeast Corner Section 19 - S 89°29'48"W 5291.29'
 Northeast Corner Section 29 - S 00°39'15"E 5350.07'
 Spk, set on occ.near Northeast Corner Section 17 - N 00°19'31"E 5363.01'

For more information on our survey in this area please contact MN DNR, Bureau of Engineering, Survey Section, 1601 Minnesota Drive, Brainerd, MN 56425