

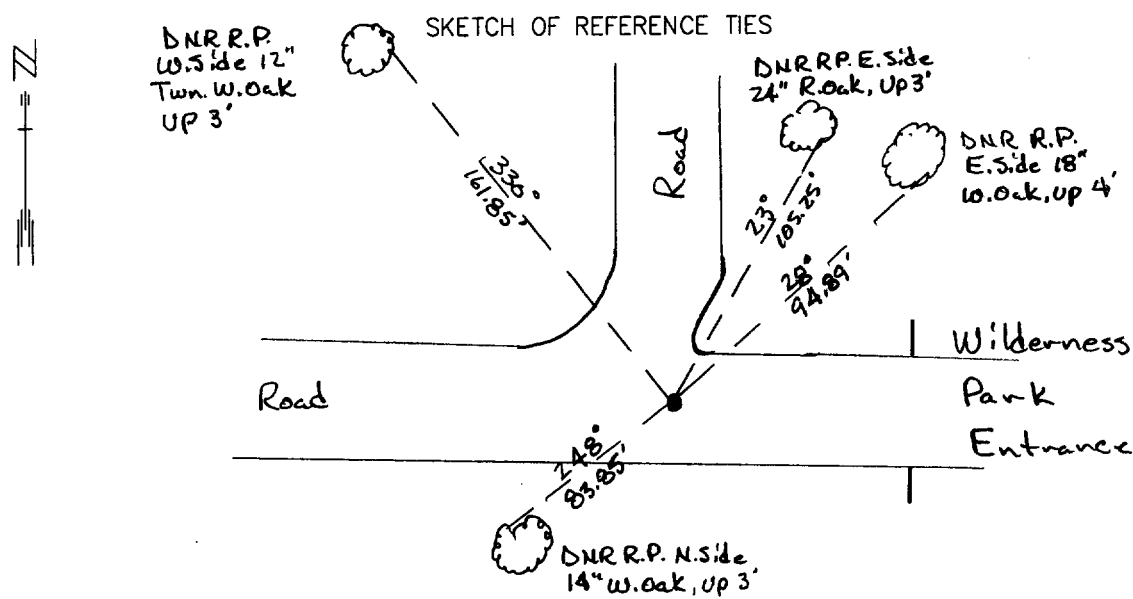
CERTIFICATE OF LOCATION OF GOVERNMENT CORNER

Northeast Corner of Section 9, Township 135 N, Range 31 W, 5TH P.M.

STATE OF MINNESOTA, County of CASS

At the corner location shown on the sketch:

- On 12/1/98 found a 1 1/4" Iron Pipe with Top Mushroomed, down 1', with 3/4" Iron Pipe in center, flush with Road
 - left monument as found,
 - lowered monument,
 - removed monument (explain)
- On _____ Placed a _____
DATE



NAD83 CASS CO. COORDINATES
N 235,992.96
E 470,903.23

Abstract Document #441836

Azimuths Observed with Compass

Statement of evidence relative to this corner location is on back of page.

DATE 10/29/99
FILE WMA01198

I hereby certify that this document and the data contained herein was prepared by me or under

my direct supervision.
John D. Walker 5/31/01
SIGNATURE DATE

License Number 16098

- Land Surveyor, Professional Engineer
- County Surveyor, County Engineer

OFFICE OF THE COUNTY RECORDER

County of Cass

I hereby certify that this document was filed in the Co. recorders office at 2:12 P.M. on the 16th day of Oct. A.D., 2001

County Recorder Kathryn M. Norby
By John F. Maeda, Deputy

DOCUMENT NO. 441836

Northeast Corner Section 9, Township 135 North, Range 31 West

The Department of Natural Resources, Bureau of Engineering contacted the following offices for information regarding this corner:

MN Secretary of State
Cass County Surveyor
Widseth, Smith and Nolting of Brainerd
Landecker and Associates of Pequot Lakes
Landecker and Associates of Walker
Central Minnesota Surveying

1858 The US General Land Office field notes, on file in the Secretary of State's Office, show this corner to be marked with a post and the following bearing trees were marked:

W. Birch 10" S 42 ½° E 20 links
W. Birch 8" S 15° W 28 links
W. Birch 7" N 41 ½° E 53 links
Blk. Oak 6" N 27° W 22 links

1971 Donald Coulter worked on sections 10 - 15 for a plat of Wilderness Park. He set or found a 1 1/4" iron pipe to mark the corner. He took ties to four oaks and an elm.

1993 The DNR survey crew found a 3/4" iron pipe bent over at road surface. The pipe was straightened and replaced at the intersection of roads east, west and north.

1998 The DNR survey crew found the 1 1/4" iron pipe with a mushroomed top, down 12", with a 3/4" iron pipe in the center, flush with the road. The four oak tie trees taken by Coulter were found. The corner was accepted as the best evidence of the corner.

For more information on our survey in this area please contact MN DNR, Bureau of Engineering, Survey Section, 1601 Minnesota Drive, Brainerd, MN 56425