

CERTIFICATE OF LOCATION OF GOVERNMENT CORNER

I hereby certify that this survey, plan, or report was prepared by me or under my direct supervision and that I am a duly Licensed Land Surveyor under the laws of the State of Minnesota.

[Signature]

Date: 9/16/01 License No: 21367

OFFICE OF THE COUNTY RECORDER
County of CASS

I hereby certify that this document was filed in the Office of the County Recorder at 10:50 o'clock A .M. on the 10th day of Sept., 20 01 A.D.

County Recorder Kathryn M. Norby
By: John F. Naeder, Deputy
DOCUMENT NO. 440136

NORTH QUARTER Corner of Section 33, Township 142 N, Range 31 W, 5TH P.M.

On 5/10/01 found a 2" IRON PIPE WITH CAP UP 8"

left monument as found, lowered monument, removed monument (explain)

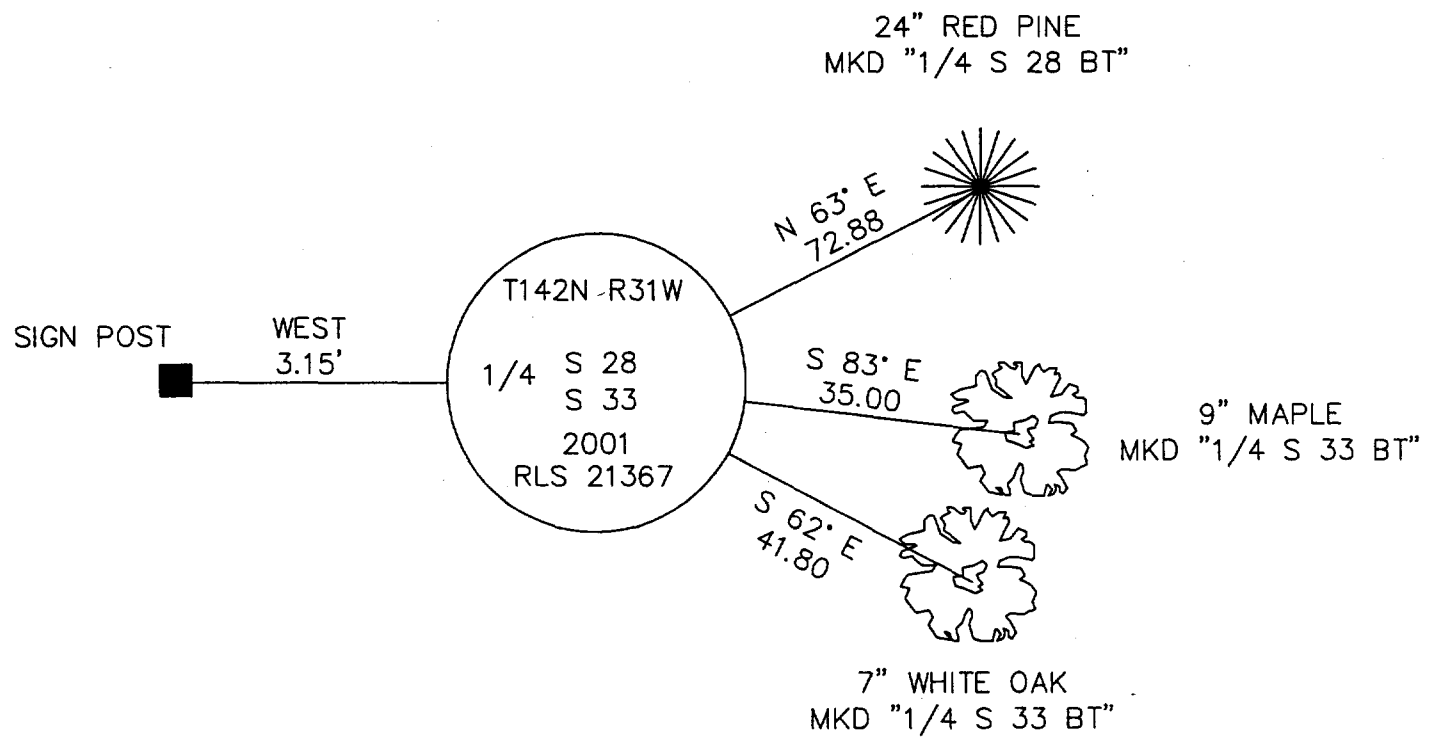
On 7/30/01 placed a THE CAP WAS STAMPED AS SHOWN

decl: 5° E (ASSUMED)

SKETCH OF REFERENCE TIES

Not to Scale

LAT. 47° 05' 04.1038"
LONG. 94° 36' 29.8768"



Statement of evidence for this corner position is on the back of this page

STATEMENT OF EVIDENCE

Index No. V - 11

North Quarter corner, Section 33, Township 142 North,
Range 31 West, Cass County, Minnesota

1873 P. H. Conger, U.S. Deputy Surveyor, originally established this corner position while subdividing Township 142 North, Range 31 West. A wood post was set to mark the corner position with the following witnesses: A 30" White Pine, South 67 degrees East, 69 links; a 3" Birch, North 58 degrees West, 21 links.

1915 County Survey Record Book "C", page 511, shows a survey by E. B. Horst. He set corner from SE B.T. On p. 514, B. C. Baldwin set a 2 1/4" x 48" iron monument.

1915 County Resurvey plat by John Curo, Cass County Surveyor, resurvey of Section 28, set 2 1/4" x 48" iron monument with cap from original BT's with Pits 30" x 30" x 12" East and West 6 feet.

1998 Rob Main, U.S. Forest Service, found 2" iron pipe with cap up 8" from which the following accessories: A 7" White Oak, South 62 degrees East 41.80 feet; MKD 1/4 S33 BT; a 9" Maple, South 83 degrees East 35.00 feet; MKD 1/4 S33 BT; a 24" Red Pine, North 63 degrees East 72.88 feet; MKD 1/4 S28 BT; and an 8' steel sign post West 3.15 feet. Corner is located in Northeast corner of field.

2001 May 10, a Landecker & Associates, Inc. survey crew found a 2" capped iron monument with 1998 accessories as noted by U.S. Forest Service and accepts the corner a perpetuation of the original corner position. The cap was stamped as shown.