

CERTIFICATE OF LOCATION OF GOVERNMENT CORNER

NORTH QUARTER Corner of Section 22, Township 135 N., Range 32 W., 5th P.M.

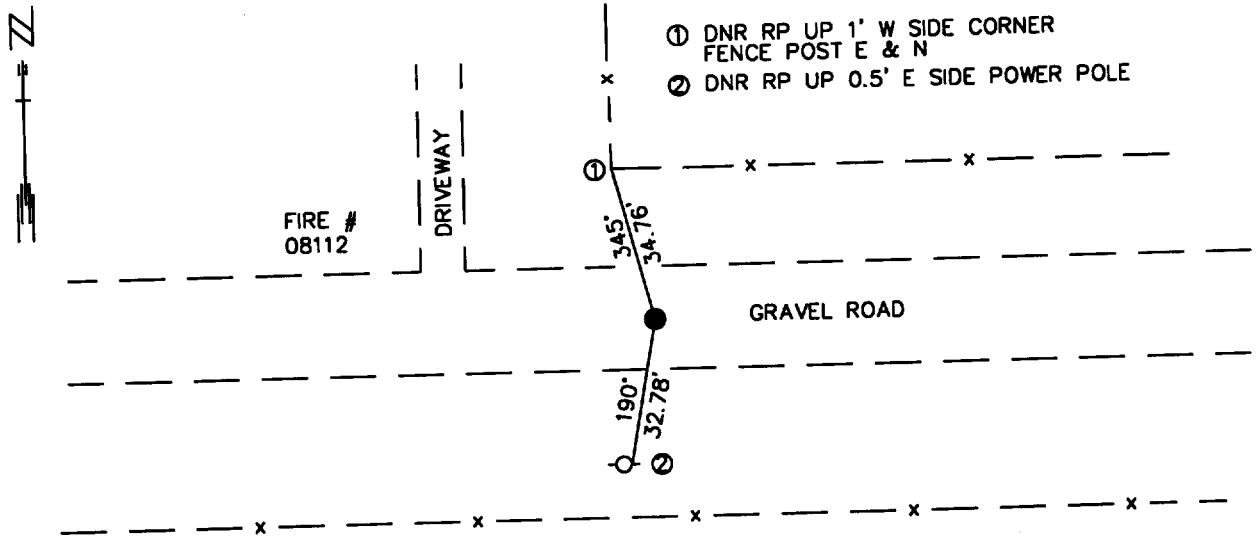
STATE OF MINNESOTA, County of CASS

At the corner location shown on the sketch:

On 5/3/00 found a 1 1/4" IRON PIPE ON CL E-W GRAVEL RD 9' EAST OF FENCE
DATE
NORTH, +/- 35' EAST OF CENTERLINE DRIVEWAY NORTH
 left monument as found, lowered monument, removed monument (explain)

On _____ Placed a _____
DATE

SKETCH OF REFERENCE TIES



1983 CASS COUNTY SOUTH COORDINATE SYSTEM

N= 225164.55
E= 439408.62

AZIMUTHS OBSERVED WITH A COMPASS

Statement of evidence relative to this corner location is on back of page.

JULY 2000
FOM01868

I hereby certify that this document and the data contained herein was prepared by me or under my direct supervision.

John D. Walker 4/5/01
SIGNATURE DATE

License Number 16098

Land Surveyor, Professional Engineer
 County Surveyor, County Engineer

OFFICE OF THE COUNTY RECORDER 434531
County of Cass

I hereby certify that this document was filed in the Co. Recorders Office at 2:50 P.M. on the 11th day of April A.D., 2001

County Recorder Kathryn M. Nordby
By K.F., Deputy

DOCUMENT NO. 434531

North Quarter Corner Section 22, Township 135 North, Range 32 West

The Department of Natural Resources, Bureau of Engineering contacted the following offices for information regarding this corner:

MN Secretary of State
Cass County Surveyor
Widseth, Smith and Nolting of Brainerd
Landecker and Associates of Pequot Lakes
Landecker and Associates of Walker
Central Minnesota Surveying

1866 In October, the US General Land Office field notes, on file in the Secretary of State's Office, show this corner to be marked with a post and the following bearing trees were marked:

Black Pine 20" S 18° W 52 links (34.3')
Black Pine 18" N 24.5° W 44 links (29.04')

1916 E.B. Horst set iron monument for the corner 2673.1' from section corners east and west.

2000 In May, the DNR survey crew found 1 1/4" iron pipe, down 0.1'. This iron pipe fit Horst's distance of 5286.0' to the North Quarter Corner Section 21 as we measured 5284.37'. No other evidence was found.

Northeast Corner Section 21 - S 89°46'14"E 2672.28'
Bridge spike at approximate Northeast Corner Section 22 - N 89°39'52"E 2661.52'
(Bridge spike is in the center of road east - west and 5' west of center road north - south)

For more information on our survey in this area please contact MN DNR, Bureau of Engineering, Survey Section, 1601 Minnesota Drive, Brainerd, MN 56401