

CERTIFICATE OF LOCATION OF GOVERNMENT CORNER

NORTH QUARTER Corner of Section 16, Township 135 N., Range 32 W., 5th P.M.

STATE OF MINNESOTA, County of CASS

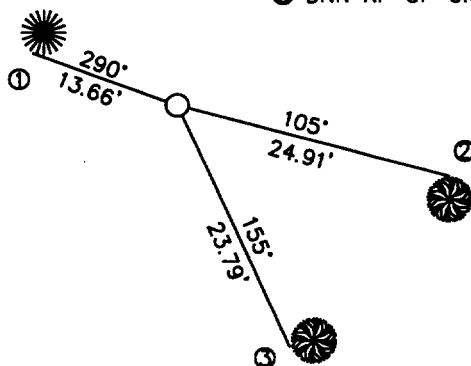
At the corner location shown on the sketch:

- On _____ found a _____
DATE
- left monument as found, lowered monument, removed monument (explain)
- On 5/23/00 Placed a 3/4" X 24" IRON ROD WITH DNR SURVEY MARKER CAP
DATE
UP 0.2" WITH RIBBONED STICK IN WOODS

SKETCH OF REFERENCE TIES



- ① DNR RP UP 0.5' SW SIDE 7" JACK PINE
- ② DNR RP UP 1.0' N SIDE 3" MAPLE
- ③ DNR RP UP 0.5' W SIDE 3' OAK



1983 CASS COUNTY SOUTH
COORDINATE SYSTEM
N= 230426.16
E= 434049.78

AZIMUTHS OBSERVED WITH A COMPASS

Statement of evidence relative to this corner location is on back of page.

JULY 2000
FOM01868

I hereby certify that this document and the data contained herein was prepared by me or under my direct supervision.

[Signature] 4/5/01
SIGNATURE DATE

License Number 16098

- Land Surveyor, Professional Engineer
- County Surveyor, County Engineer

OFFICE OF THE COUNTY RECORDER 434524
County of Cass

I hereby certify that this document was filed in the Co. Recorders Office at 2:15 P. M. on the 1st day of April A.D., 2001

County Recorder Kathryn M. Norby
By K. J., Deputy

DOCUMENT NO. 434524

North Quarter Corner Section 16, Township 135 North, Range 32 West

The Department of Natural Resources, Bureau of Engineering contacted the following offices for information regarding this corner:

MN Secretary of State
Cass County Surveyor
Widseth, Smith and Nolting of Brainerd
Landecker and Associates of Pequot Lakes
Landecker and Associates of Walker
Central Minnesota Surveying

1866 In October, the US General Land Office field notes, on file in the Secretary of State's Office, show this corner to be marked with a post and the following bearing trees were marked:

Black Pine 10" S 54° W 40 links (26.4')
Black Pine 10" N 54° W 62 links (40.9')

2000 In May, the DNR survey crew searched for the corner and bearing trees at lost position and found nothing. Set 3/4" x 24" iron rod with MN DNR SURVEY MARKER top.

Northeast Corner Section 16 - N 89°31'32"E 2657.75'
Northeast Corner Section 17 - S 89°31'32"W 2657.74'

For more information on our survey in this area please contact MN DNR, Bureau of Engineering, Survey Section, 1601 Minnesota Drive, Brainerd, MN 56401