

# CERTIFICATE OF LOCATION OF GOVERNMENT CORNER

Northeast Corner of Section 7, Township 138N, Range 32W, 5TH P.M.

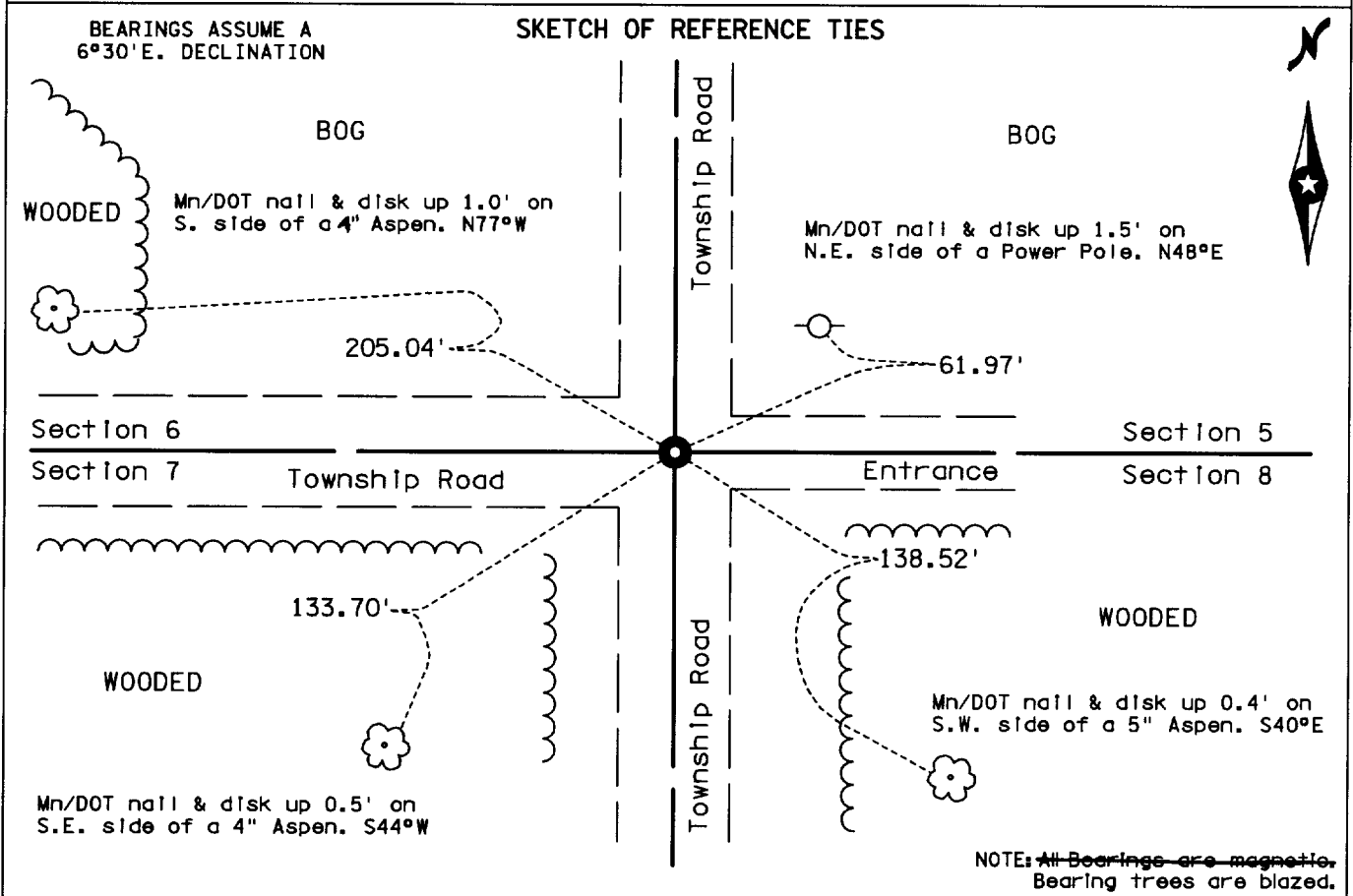
STATE OF MINNESOTA, County of Cass

At the corner location shown on the sketch

ON 5/14/97 found a wooden post 3' below the road surface.

left monument as found,  lowered monument,  removed monument (explain)

ON 5/14/97 placed a cast Iron monument. Top of monument is 0.5' below the road surface..



Statement of evidence relative to this corner is on back of page

# 433376

I hereby certify that this document and the data contained herein was prepared by me or under my direct supervision.

Kenneth R. Donoghue 7/17/97  
SIGNATURE DATE

Registration No. 14950

- Land surveyor,  Professional Engineer  
 County Surveyor,  County Engineer

**OFFICE OF THE COUNTY RECORDER**

County of Cass

I hereby certify that this document was filed in the Co. Recorders office at 11:25 A.M. on the 5<sup>th</sup> day of March A.D., 2001

County Recorder Claudia Kaylor  
 By John C. Maeder, Deputy

DOCUMENT NO. 433376

**Statement of Evidence:**

NORTHEAST CORNER SECTION 7, TOWNSHIP 138 NORTH,  
RANGE 32 WEST OF THE FIFTH PRINCIPAL MERIDIAN

The original Public Land Survey was run by Mahlon Black in 1870. A post was set to mark the corner and four bearing trees were recorded as accessories; an 8- inch Spruce South 8 degrees East 300 links, a 12- inch Tamarack South 38 1/2 degrees West 54 links, a 12- inch Spruce North 80 degrees East 365 links and a 9- inch Tamarack North 85 ½ degrees West 390 links.

June 22, 1922, John Curo, Cass County Surveyor, searched for corners along the east line of Section 7. A "stake set by some surveyor" was recovered marking this corner but the post and accessories recorded by Black in 1870 could not be found. Additional survey activities along this line were abandoned.

May 14, 1997, Charles Frach and Allen Sprague of the Minnesota Department of Transportation excavated the intersection of Township Road centerlines in search of this corner. A wood post was recovered 3 feet below the roads surface.

The wood post recovered by Frach and Sprague in 1997 was accepted as marking this Public Land Survey corner. Although the origin of the found wood post cannot be determined, this position is in agreement with recent survey measurements and occupation lines of long standing. A cast iron monument was placed above the found wood post to mark this corner.

For recent survey measurements and additional information contact the Surveys Section of the Minnesota Department of Transportation in Bemidji.