

State of Minnesota, County of Cass
I hereby certify that the within instrument
was filed in this office for record on the
8 day of Feb. A.D. 2001
at 9:20 O'clock A M and was duly
recorded as Micro Doc. No. 432816

Claudia Kayler
COUNTY RECORDER *for*

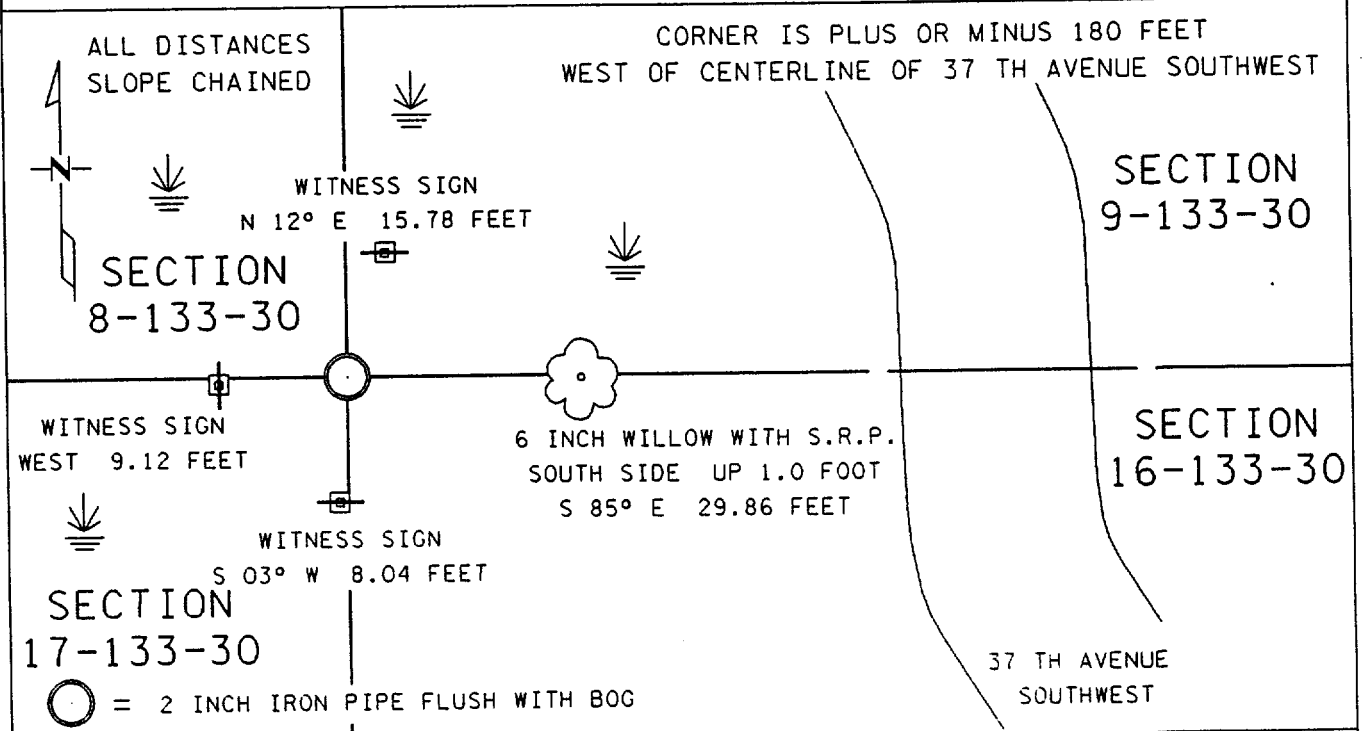
J-9

CERTIFICATE OF LOCATION OF GOVERNMENT CORNER

NORTHEAST Corner of Section 17, Township 133, Range 30
5 TH Principal Meridian, State of Minnesota, County of CASS

At the corner location shown on the sketch:

- On 6-22-99 found a 2 INCH IRON PIPE
DATE
- left monument as found lowered monument removed monument (explain)
- On _____ placed a _____
DATE



Statement of evidence for this corner location is on back of this page.

I hereby certify that this document was researched and prepared by me or under my direct supervision.

Signature *James Klum* Date 1-11-2001 License No. 23668
Title: Land Surveyor Professional Engineer County Surveyor County Engineer

Statement of Evidence: Northeast Corner Section 17, Township 133 North, Range 30 West,
5th Principal Meridian, Cass County, Minnesota.

The original public land survey was run in 1870, and a wood post was set to mark the corner. Bearing tree ties were made to two black pines.

On June 22, 1999, The Minnesota Department of Transportation searched the area and found a two inch iron pipe. Bearing ties were made to three witness posts and a willow. The Minnesota Department of Transportation accepts this position as the correct location for the corner.

For details and survey analysis, contact the Minnesota Department of Transportation District Surveys Office in Baxter, Minnesota.