

CERTIFICATE OF LOCATION OF GOVERNMENT CORNER

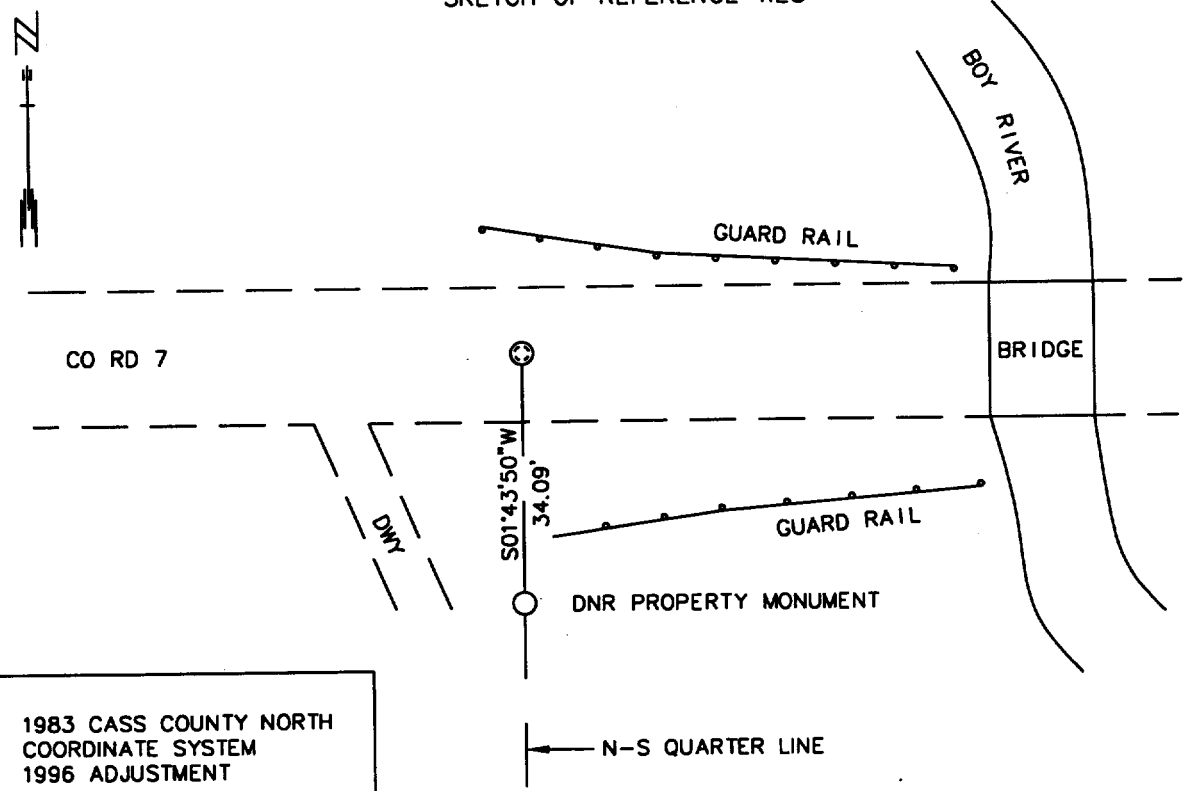
NORTH QUARTER Corner of Section 2, Township 140, Range 28, 5TH P.M.

STATE OF MINNESOTA, County of CASS

At the corner location shown on the sketch:

- On _____ found a _____
DATE
- left monument as found, lowered monument, removed monument (explain)
- On 10/25/00 Placed a PK IN CL OF RD, 50' E OF CL DWY S,
DATE +/- 100' WEST OF WEST EDGE BRIDGE DECK

SKETCH OF REFERENCE TIES




1983 CASS COUNTY NORTH
COORDINATE SYSTEM
1996 ADJUSTMENT
N = 163563.71
E = 508244.03

Statement of evidence relative to this corner location is on back of page.

11/9/00
FOM01869

I hereby certify that this document and the data contained herein was prepared by me or under

my direct supervision.

 SIGNATURE _____ DATE 11/22/00

- License Number 16098
- Land Surveyor, Professional Engineer
 - County Surveyor, County Engineer

OFFICE OF THE COUNTY RECORDER # 430970
 County of Cass

I hereby certify that this document was filed in the Co. Recorders Office at 2:10 P. M. on the 28th day of Nov. A.D., 2000
 County Recorder Claudine Kaylor
 By _____, Deputy
 DOCUMENT NO. 430970

North Quarter Corner Section 2, Township 140 North, Range 28 West

The Department of Natural Resources, Bureau of Engineering contacted the following offices for information regarding this corner:

MN Secretary of State
Cass County Surveyor
Widseth, Smith and Nolting of Brainerd
Landecker and Associates of Pequot Lakes
Landecker and Associates of Walker
Central Minnesota Surveying
AMI Surveyors and Mappers

This corner was not originally set by the US General Land Office.

1977 Walt Curo surveyed some tracts in the northwest quarter of Section 2 for Averbeck.

2000 In March, AMI states in a letter to DNR that they have spent a lot of time searching for this corner, but to no avail.

On October 9, the DNR received from Bill Hansen Realty a copy of a Certificate of Survey for Zwart signed by Roger A. Mustonen of AMI and dated 4/21/98. The certificate shows a location for this corner and the east line of the Northwest Quarter of Section 2, but no monuments on the line. There is an iron shown 41.52' west of the quarter line and 450' south of the north line of the section.

On October 25, the DNR survey crew set a PK nail for the quarter corner at the split of the distance between the NE corner of Section 3 and the NE corner of section 2 and on line between the Southeast and South Quarter Corners of Section 35. An iron pipe was found 450' south of the quarter corner and 45.49' west of the quarter line. The quarter line runs through the southeast corner of a house about 240' south of the quarter corner. Measured as follows:

South Quarter Corner Section 35, T141N, R28W -	S 88°54'29"E 761.34'
Southeast Corner Section 35, T141N, R28W-	N 88°54'29"W 1867.41'
North Quarter Corner Section 11	S 01°43'50"W 5279.67'

For more information on our survey in this area please contact MN DNR, Bureau of Engineering, Survey Section, 1601 Minnesota Drive, Brainerd, MN 56401