

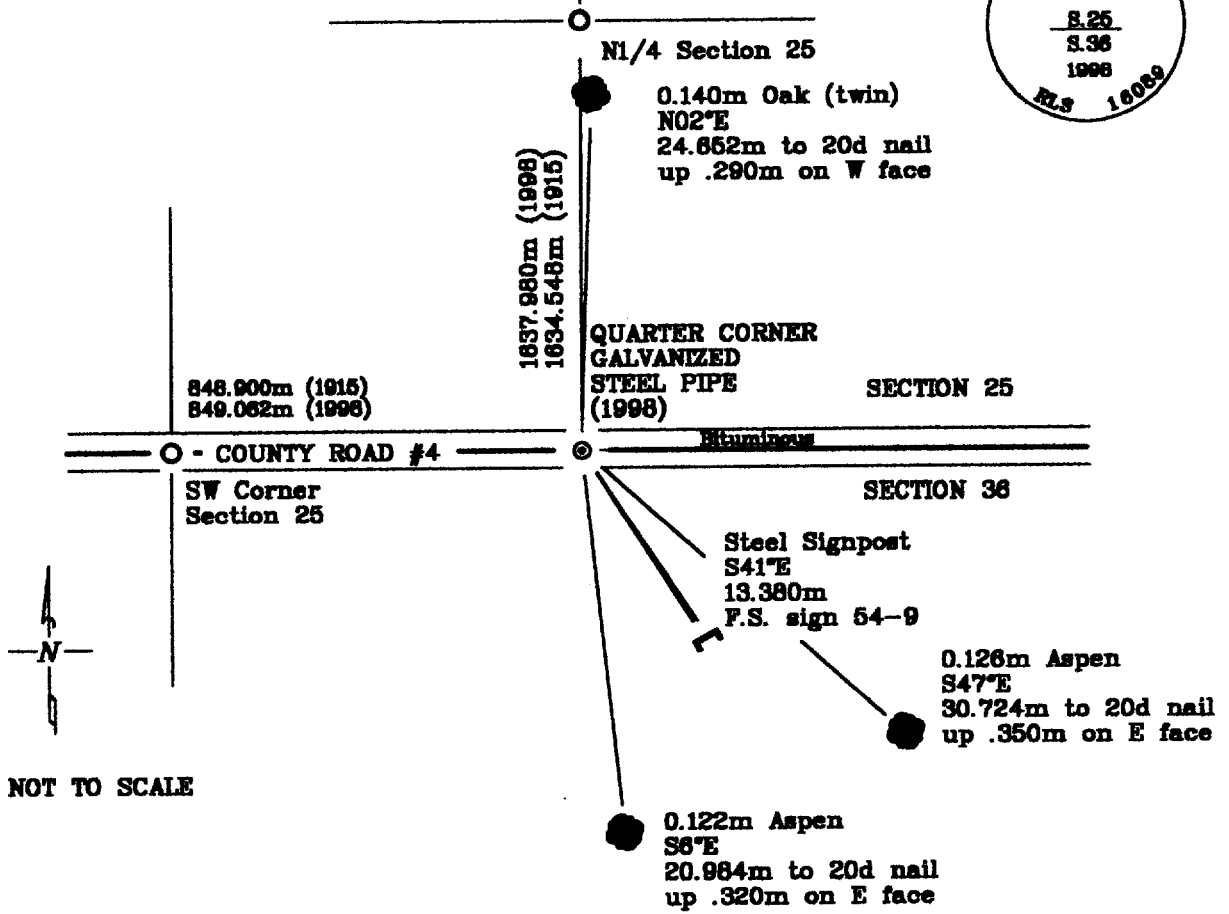
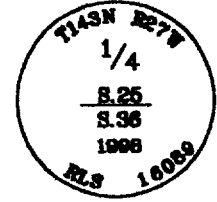
### CERTIFICATE OF LOCATION OF GOVERNMENT CORNER

North Quarter Corner, Section 36, Township 143 North, Range 27 West, of the Fifth Principal Meridian, Cass County, Minnesota.

November 20, 1998; Northern Lights Surveying and Mapping, Inc. set a brass capped Steel pipe in County Road 4 as a perpetuation of the original General Land Office corner

#### SKETCH OF REFERENCE TIES & EVIDENCE

T.143N., R.27W.



Bearings are Grid  
North, Minnesota  
Central Zone, measured  
with a hand compass  
adjusted to 3° East  
declination.

New bearing trees were  
blazed, scribed & painted  
red. A tag stating the  
bearing & distance was  
affixed to the tree. A  
nail was placed in the base  
of the tree and the distance  
was measured from the  
monument to the nail.

Statement of evidence relative to this corner location is on the back of this page

I hereby certify that this survey, plan, or report was prepared by me or under my direct supervision and that I am a duly Licensed Land Surveyor under the laws of the State of Minnesota.

*Laverne Leuchling* 6-29-99  
Laverne Leuchling Date  
Licensed Land Surveyor No. 16089  
NORTHERN LIGHTS SURVEYING & MAPPING, INC.

OFFICE OF THE COUNTY RECORDER 414548  
County of Cass

I hereby certify that this document was filed in the Recorder's office.

Time: 9:30 A.M. Date: July 2, 1999  
Recorder Claudia Kaylke  
By K.J. Deputy  
DOCUMENT NO. 414548

**Statement of Evidence**

North Quarter Corner, Section 36, Township 143 North, Range 27 West, of the Fifth Principal Meridian, Cass County, Minnesota.

September, 1873; General Land Office (G.L.O.) survey notes; Deputy Surveyor William Allen set a wooden post and referenced it with the following:

10" (0.254m) Elm	6" (0.152m) Birch
N6°W	S66°W
14 Links (2.816m)	13 Links (2.615m)

Said records are on file with the Secretary of State, St. Paul, Minnesota. Copies of these records are on file with the Cass County Surveyor's Office, Walker, Minnesota.

February, 1915; Cass County Survey Record #328, Book "B", pp.456-482; Curo and Donner found the G.L.O. birch down with a scribe visible; they set a 80d spike for the corner and referenced it with the following:

8" (0.203m) Birch	16" (0.406m) Birch	10" (0.254m) White Pine Stump
N69°35'W	S50°15'E	N51°E
15.80 Feet (5.816m)	55.05 feet (16.780m)	52.35 Feet (15.956m)

Their distance to the N1/4 of Section 25 was 5362.68 feet (1634.548m) and their distance to the Southwest corner of Section 25 was 2765.10 feet (848.900m).

October, 1969; United States Department of Agriculture - Forest Service (U.S.D.A.-F.S.) Field Book #1, p. 5; Curt Krause searched for a half hour, but found no evidence of the corner or its witnesses.

August, 1997; U.S.D.A.-F.S. Field Book #1, p. 5; Rob Main and Curt Krause occupied a pin at the intersection of the centerline of County Road #4 and an old fence line running north, and used it as a resource grade GPS position.

September 1998: Northern Lights Surveying & Mapping, Inc. crew of Heinle & Carlson occupied the 1997 USDA-FS pin with GPS and defined it's position.

November, 1998; Northern Lights Surveying and Mapping, Inc., and Cass County crews excavated a 4'x 20' search area 1 1/2' down to natural soil. Nothing was found.

November 20, 1998; NLSM crew of Heinle and Carlson returned to site and set a 0.015m diameter galvanized steel pipe 0.610m long, with a brass cap, below the bituminous for the quarter corner. The following references were then established:

0.126m Aspen	0.122m Aspen	0.140m Oak (twin)
S47°E	S6°E	N02°E
30.724m to 20d nail	20.984m to 20d nail	24.852m to 20d nail
up .350m on E face	up .320m on E face	up .290m on W face
Steel Signpost		
S41°E		
13.380m		
F.S. sign 54-9		

The corner was set to reproduce the position tied into by Donner & Curo in the 1915 Cass County road survey. The resultant corner was 849.062 meters east of the SW of Section 25 and 1637.920 meters south of the N1/4 of Section 25.

Northern Lights Surveying and Mapping, Inc., Boy River Township Field Book #4, p. 20.  
This certificate corrects Document #412865

**Coordinates:****Cass County North**

Northing = 70943.630 meters  
Easting = 165803.167 meters

**State Plane Coordinate System  
Minnesota Central Zone  
NAD 83**

Northing = 340934.951 meters  
Easting = 815929.739 meters

Latitude = 47°10'02.74197" North  
Longitude = 94°02'23.64306" West