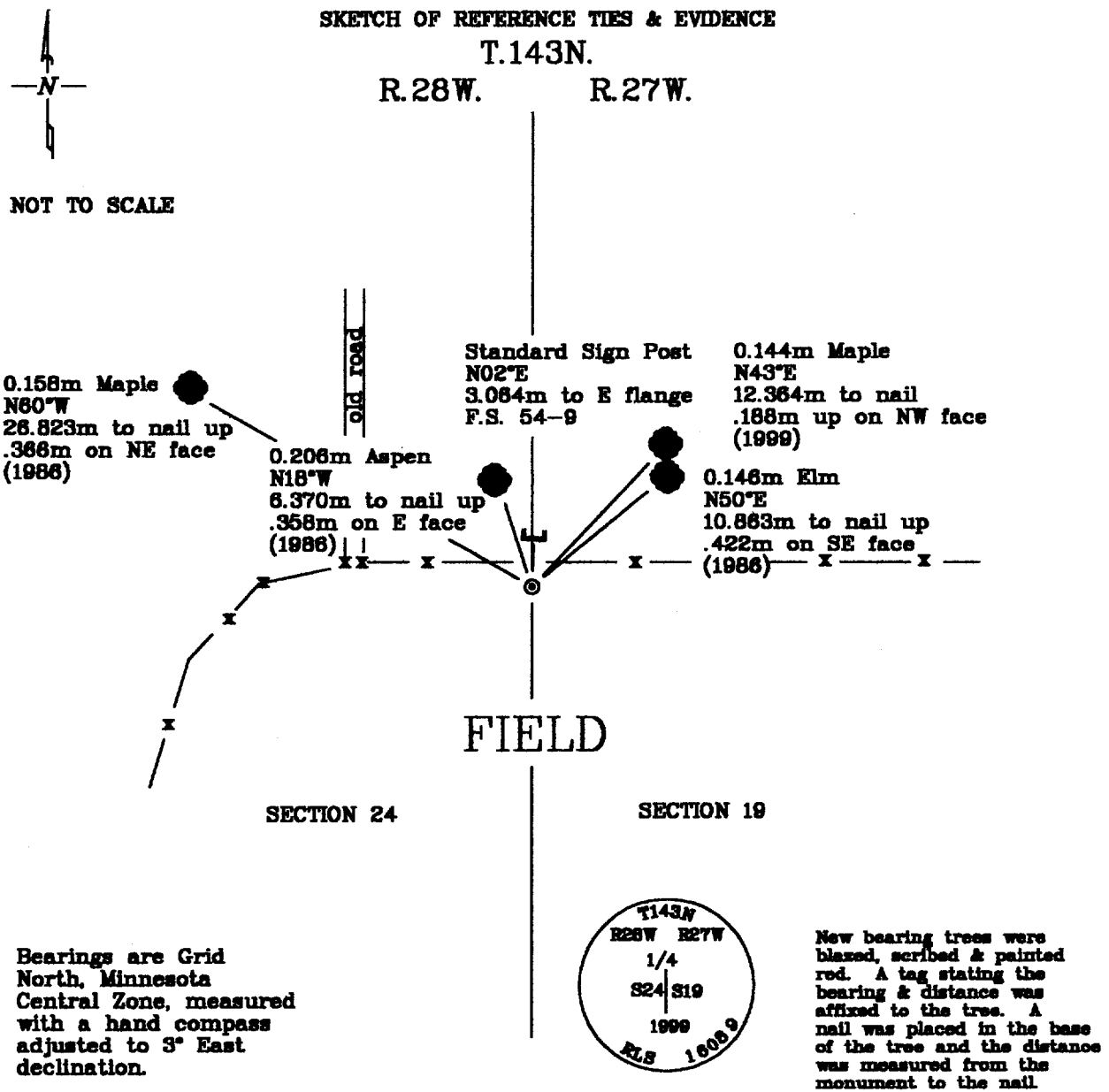


### CERTIFICATE OF LOCATION OF GOVERNMENT CORNER

West Quarter Corner, Section 19, Township 143 North, Range 27 West, of the Fifth Principal Meridian, Cass County, Minnesota.

May 1, 1999 Northern Lights Surveying and Mapping, Inc., (NLSM) reset this corner, based on references, with a brass capped steel pipe set .012m below ground surface.



Bearings are Grid North, Minnesota Central Zone, measured with a hand compass adjusted to 3° East declination.

Statement of evidence relative to this corner location is on the back of this page

I hereby certify that this survey, plan, or report was prepared by me or under my direct supervision and that I am a duly Licensed Land Surveyor under the laws of the State of Minnesota.

*LaVerne Leuelling*      6-29-99  
 LaVerne Leuelling      Date  
 Licensed Land Surveyor No. 18089  
 NORTHERN LIGHTS SURVEYING & MAPPING, INC.

OFFICE OF THE COUNTY RECORDER 414546  
 County of Cass

I hereby certify that this document was filed in the Recorder's office.

Time: 9:20 A.M. Date: July 2, 1999  
 Recorder Claudine Kayler  
 By K.F. Deputy  
 DOCUMENT NO. 414546

## Statement of Evidence

West Quarter Corner, Section 19, Township 143 North, Range 27 West, of the Fifth Principal Meridian, Cass County, Minnesota.

1873; United States General Land Office Survey (G.L.O.) set a wood post for this corner and referenced with the following:

0.250m Birch	0.152m Birch
S40°E	S50°E
9 Links (1.811m)	9 Links (1.811m)

Said records are on file with the Secretary of State, St. Paul, Minnesota; copies of these records are on file with the Cass County Surveyor's office, Walker, Minnesota.

1920; County Survey Record Book "C", p. 394-396; Ben Clark found a point of a cedar post. He then set a 3"x 30" (0.076m x 0.762m) iron pipe with a cap.

1920; County Resurvey Plat "E-7", by E. B. Horst shows a corner at this location.

1970; United States Department of Agriculture-Forest Service (USDA-FS) Corner Restoration Book #2, p.33; Curt Krause chained to the area from the north and searched, but found no evidence.

1986; Certificate of Location of Government Corner #291482 on file with Cass County Recorder; Walt Curo RLS 11395, set a 2"x 80"(0.051m x 1.524m) galvanized iron pipe with a brass cap at the north edge of a field and referenced it with the following:

0.152m Aspen	0.152m Elm	0.152m Maple	Steel Sign Post
N18°W	N50°E	N60°W	North
20.90ft (6.370m)	35.64ft (10.863m)	88.00ft (26.822m)	2.0ft (0.609m)
			F.S. sign 54-9

1999; Northern Lights Surveying and Mapping (NLSM) visited corner to GPS and found that the monument had been removed. At this time a spike was placed in the true corner position based on the ties, and it was GPS'd.

May 1, 1999; NLSM returned to the site and set a 0.051m diameter galvanized steel pipe 0.610m long, with a brass cap set 0.012m below the surface. After setting the monument the following references were noted:

0.144m Maple	0.148m Elm	0.206m Aspen	0.158m Maple
N43°E	N50°E	N16°W	N60°W
12.364m to nail	10.863m to nail up	8.370m to nail up	26.823m to nail up
.188m up on NW face	.422m on SE face	.358m on E face	.366m on NE face
(1999)	(1986)	(1986)	(1986)

Standard Sign Post  
N02°E  
3.064m to E flange  
F.S. 54-9

Northern Lights Surveying and Mapping, Inc., Boy River Township Field Book #2, p. 46.

## Coordinates:

## Cass County North

Northing = 73385.419 meters  
Easting = 156911.745 meters

State Plane Coordinate System  
Minnesota Central Zone  
NAD 83

Northing = 343373.093 meters  
Easting = 807037.616 meters

Latitude = 47°11'22.24098" North  
Longitude = 94°09'25.71193" West