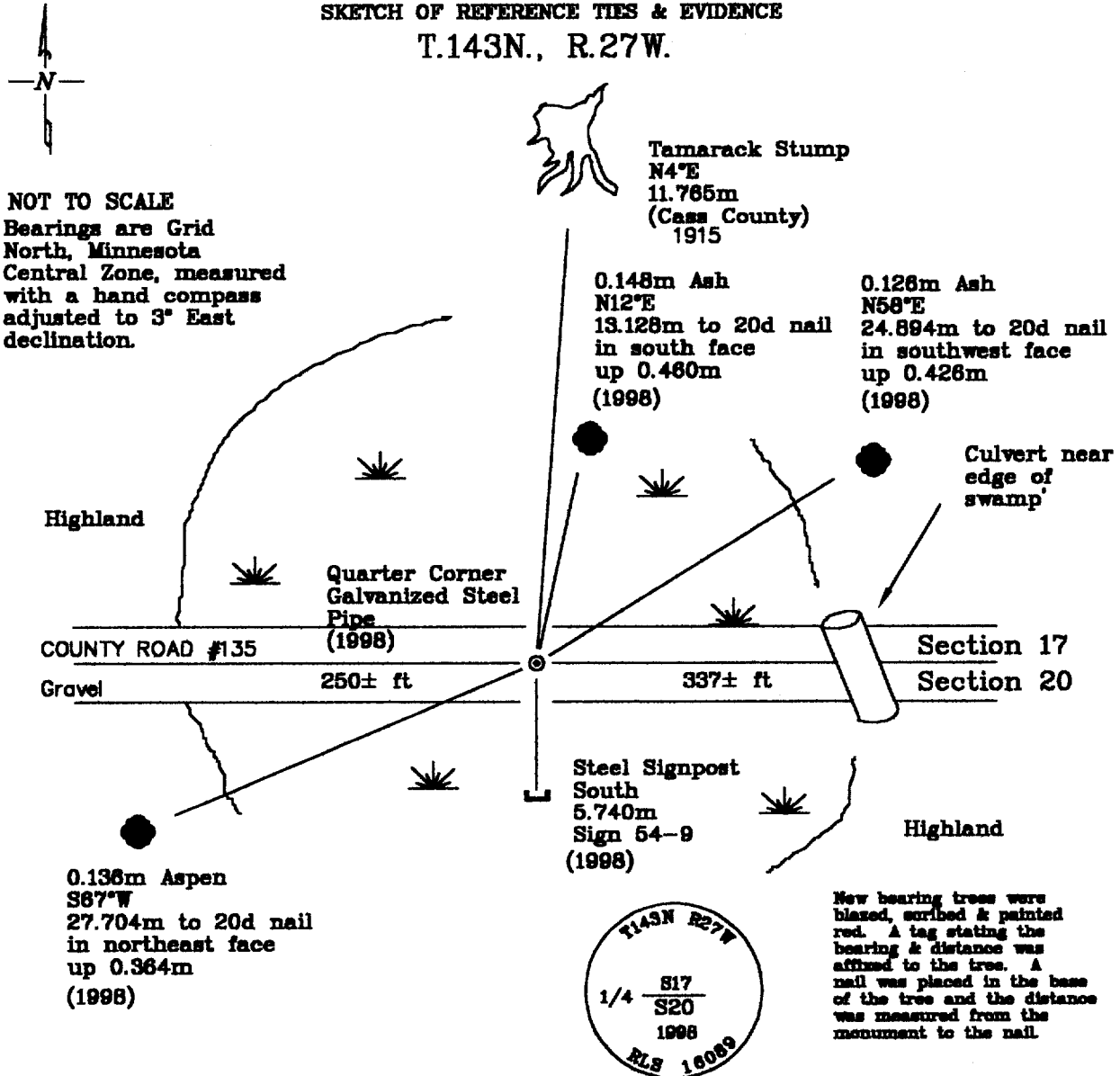


CERTIFICATE OF LOCATION OF GOVERNMENT CORNER

North Quarter Corner, Section 20, Township 143 North, Range 27 West, of the Fifth Principal Meridian, Cass County, Minnesota.

November, 1998, Northern Lights Surveying and Mapping, Inc. perpetuated the original General Land Office (G.L.O.) quarter corner using the remains of a 1915 era County reference and a 1925 call for a culvert.

SKETCH OF REFERENCE TIES & EVIDENCE
T.143N., R.27W.



Statement of evidence relative to this corner location is on the back of this page

I hereby certify that this survey, plan, or report was prepared by me or under my direct supervision and that I am a duly Licensed Land Surveyor under the laws of the State of Minnesota.

LaVerne Leuelling
LaVerne Leuelling Date 5-30-1999
Licensed Land Surveyor No. 16089
NORTHERN LIGHTS SURVEYING & MAPPING, INC.

OFFICE OF THE COUNTY RECORDER 413422
County of Cass

I hereby certify that this document was filed in the Recorder's office.

Time: 10:25 A.M., Date: 6-3-99
Recorder Claudine Kaylor
By K.F. Deputy
DOCUMENT NO. 413422

Statement of Evidence

North Quarter Corner, Section 20, Township 143 North, Range 27 West, of the Fifth Principal Meridian, Cass County, Minnesota.

1873; General Land Office (G.L.O.) survey notes; Deputy Surveyor William Allen set a wooden post for the quarter corner and referenced it with the following:

5" (0.127m) Tamarack S44°E 21 Links (4.225m)	6" (0.152m) Tamarack N47°E 15 Links (3.018m)	Swamp edge east 5 chains Swamp edge west 4 chains
--	--	--

Said records are on file with the Secretary of State, St. Paul, Minnesota; copies of these records are on file with the Cass County Surveyor's Office, Walker, Minnesota.

(1910-1915); Plat of State Rural Highway #45, p. 97, Survey Record Book "B", #280; George A. Ralph found an old post and the following references:

8" (0.203m) Tamarack N31°30'E 116 Feet (35.357m)	5" (0.127m) Tamarack S52°36"E 134 Feet (40.843m)
--	--

He established the following new references:

6" (0.152m) Tamarack N4°E 38.6 Feet (11.765m)	6" (0.152m) Cedar S27°30'E 43.6 Feet (13.298m)
---	--

1925; Cass County Construction notes for RT 45(now 135); the notes showed the corner in the centerline of the highway and 337 feet (102.718m) west of a culvert. The references were:

6" (0.152m) Tamarack Stump Northeast 38.6 Feet (11.765m)	Telephone Pole Southwest 32.5 Feet (9.906m)
---	---

November 14, 1969; United States Department of Agriculture - Forest Service (U.S.D.A.-F.S.) T.143N. R.27W. Corner Restoration Book #2, p. 4; William Okerman LS# 6807 searched the area, and found it badly burned and cut over.

October, 1998; Northern Lights Surveying and Mapping, Inc. crew of Foster and Heinle located a tamarack stump which matched the company's calculated position for the corner. Later that month, LaVerne Leuelling and Heinle returned to the location and searched the immediate area for culverts.

November, 1998; Heinle and Matt Brunner returned to the area and made a final search for evidence. They pulled a record distance from a culvert called out in a 1925 road alignment survey and intersected that distance and the record distance to the tamarack stump found during the earlier search. They then set a 0.015m diameter galvanized steel pipe 0.610m long for the quarter corner, 0.250m below the road surface, and referenced the monument with the following:

0.148m Ash N12°E 13.128m to 20d nail in south face up 0.460m	0.126m Ash N58°E 24.894m to 20d nail in southwest face up 0.426m	0.136m Aspen S67°W 27.704m to 20d nail in northeast face up 0.364m	Steel Signpost South 5.740m Sign 54-9
--	--	--	--

The crew set a bearing tree tag at the remains of the tamarack stump.

Northern Lights Surveying and Mapping, Inc. Boy River Township Field Book #2, p. 16.

Coordinates:

Cass County North

Northing = 74128.327 meters
Easting = 159295.597 meters

State Plane Coordinate System
Minnesota Central Zone
NAD 83

Northing = 344116.954 meters
Easting = 809421.098 meters

Latitude = 47°11'48.22165" North
Longitude = 94°07'32.44079" West