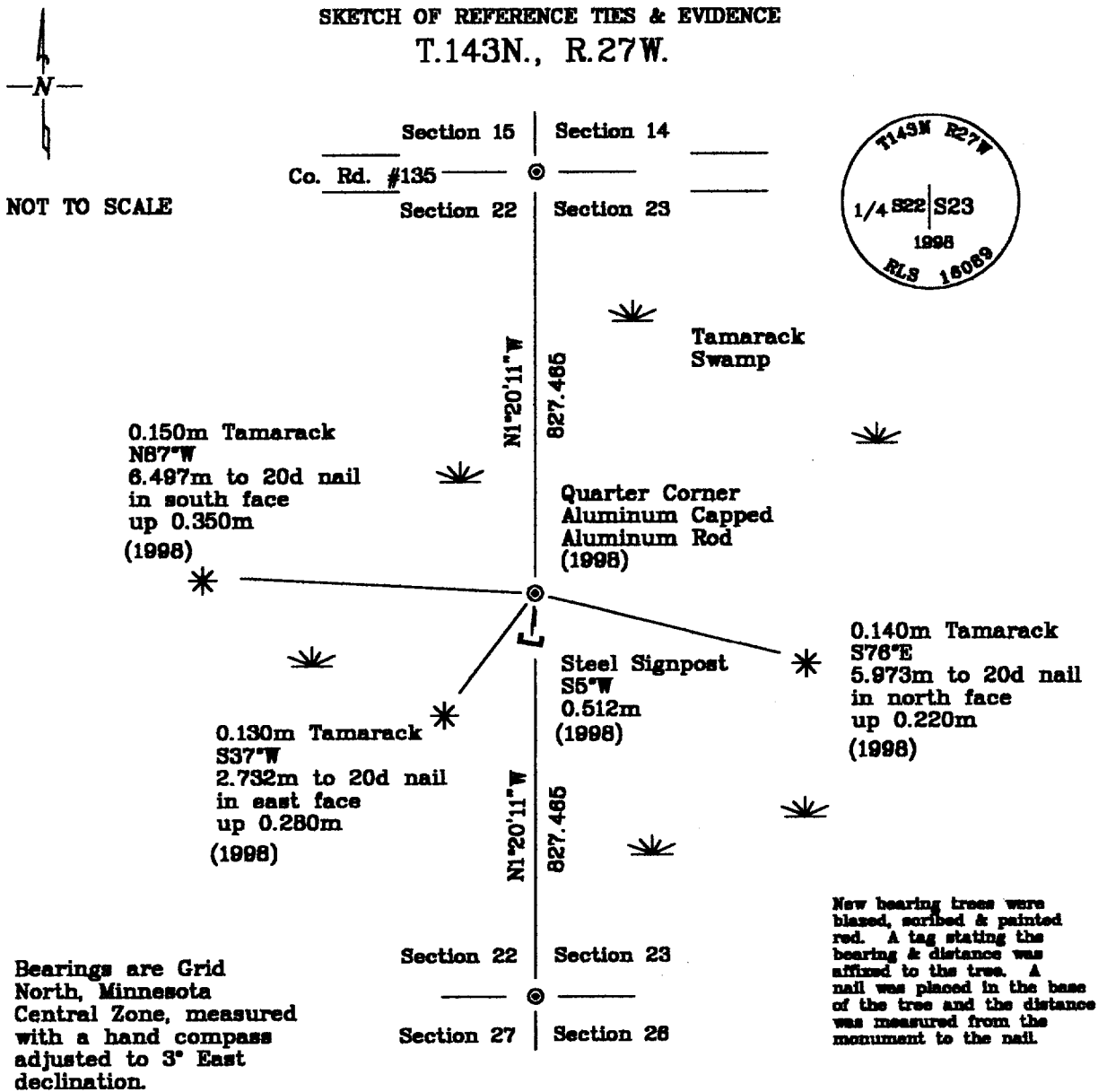


CERTIFICATE OF LOCATION OF GOVERNMENT CORNER

East Quarter Corner, Section 22, Township 143 North, Range 27 West, of the Fifth Principal Meridian, Cass County, Minnesota.

October, 1998, Northern Lights Surveying and Mapping, Inc. set an aluminum capped aluminum rod midway and on line between the southeast and northeast corners of Section 22.



Statement of evidence relative to this corner location is on the back of this page

I hereby certify that this survey, plan, or report was prepared by me or under my direct supervision and that I am a duly Licensed Land Surveyor under the laws of the State of Minnesota.

LaVerne Leuelling 5-30-1999
 LaVerne Leuelling Date
 Licensed Land Surveyor No. 16089
 NORTHERN LIGHTS SURVEYING & MAPPING, INC.

OFFICE OF THE COUNTY RECORDER 413421
 County of Cass

I hereby certify that this document was filed in the Recorder's office.

Time: 10:20 A.M. Date: 6-3-99
 Recorder Claudine Kaylor
 By K.F. Deputy
 DOCUMENT NO. 413421

Statement of Evidence

East Quarter Corner, Section 22, Township 143 North, Range 27 West, of the Fifth Principal Meridian, Cass County, Minnesota.

September, 1873; General Land Office (G.L.O.) survey notes; Deputy Surveyor William Allen set a wooden post for the quarter corner and referenced it with the following:

| | |
|----------------------|----------------------|
| 5" (0.127m) Tamarack | 4" (0.102m) Tamarack |
| N32°W | N69°E |
| 12 Links (2.414m) | 5 Links (1.006m) |

Said records are on file with the Secretary of State, St. Paul, Minnesota; copies of these records are on file with the Cass County Surveyor's Office, Walker, Minnesota.

November, 1970; United States Department of Agriculture - Forest Service (U.S.D.A.-F.S.) T.143N. R.27W. Field Book #1, p. 25; Curt Krause chained to the corner location from the approximate section corner to the north. He found no original evidence. He put a location poster on a 7" (0.178m) S40°W 13 feet (3.962m) from a 3" (0.076m) Tamarack post at the end of chaining.

October, 1998; Northern Lights Surveying and Mapping, Inc. crews searched the area for signs of any evidence, but found none. In December, crew of Leussling and Brunner returned to the corner location, made a final search with no recovery, and set a 0.019m diameter aluminum rod, 1.524m long, with a stamped 0.083m diameter aluminum cap, midway and on line for the lost quarter corner position. They also established the following references:

| | | | |
|--------------------|--------------------|--------------------|----------------|
| 0.130m Tamarack | 0.150m Tamarack | 0.140m Tamarack | Steel Signpost |
| S37°W | N87°W | S76°E | S5°W |
| 2.732m to 20d nail | 6.497m to 20d nail | 5.973m to 20d nail | 0.512m |
| in east face | in south face | in north face | |
| up 0.280m | up 0.350m | up 0.220m | |

The cap measured 0.320m above a broken swamp mat.

Northern Lights Surveying and Mapping, Inc. Boy River Township Field Book #2, p. 61.

Coordinates:

Cass County North

Northing = 73297.197 meters
Easting = 163310.867 meters

State Plane Coordinate System
Minnesota Central Zone
NAD 83

Northing = 343287.460 meters
Easting = 813436.569 meters

Latitude = 47°11'19.11480" North
Longitude = 94°04'21.76939" West