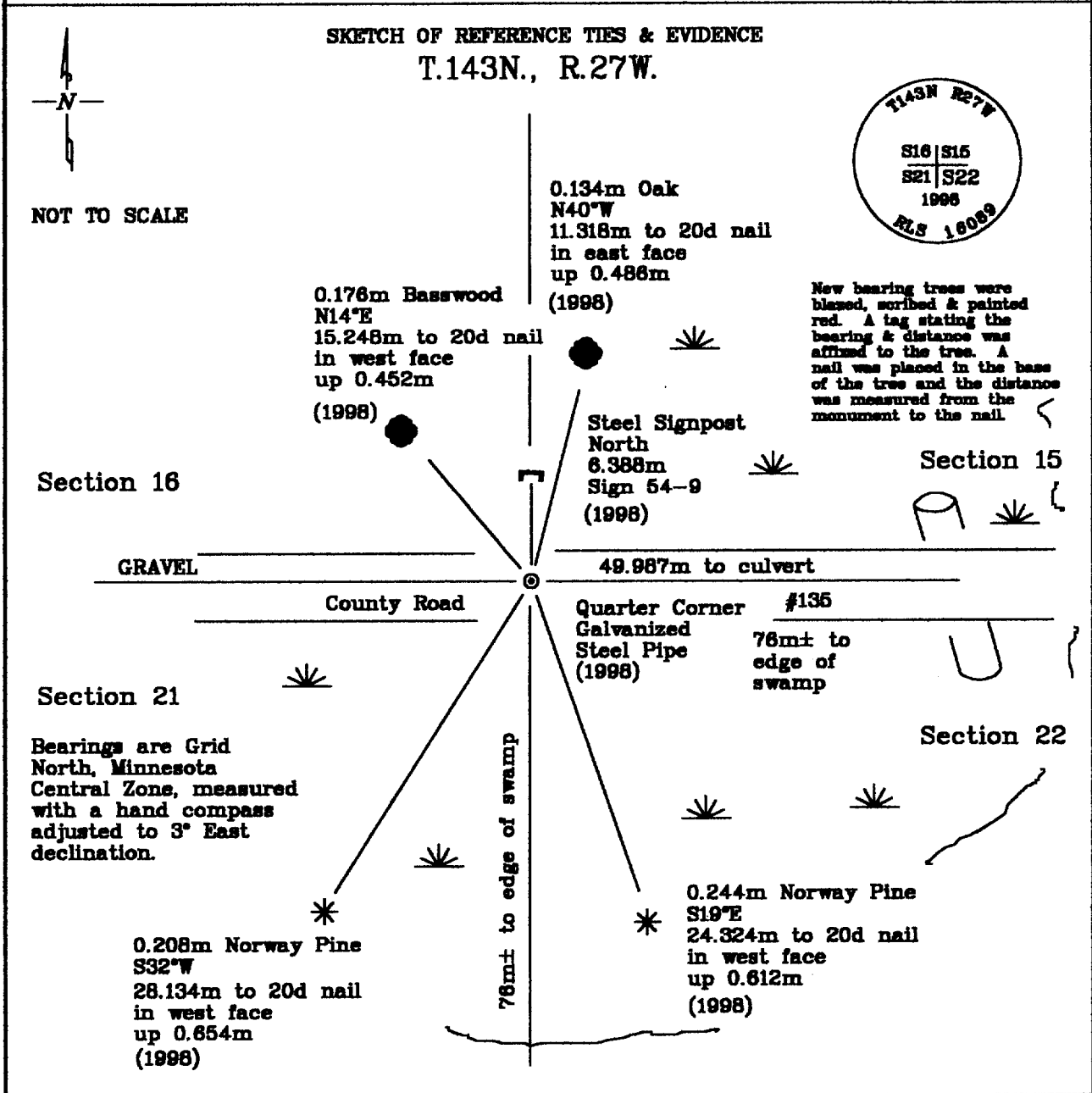


CERTIFICATE OF LOCATION OF GOVERNMENT CORNER

Northeast Corner, Section 21, Township 143 North, Range 27 West, of the Fifth Principal Meridian, Cass County, Minnesota.

November, 1998, Northern Lights Surveying and Mapping, Inc. set a brass capped pipe in the centerline of Highway 135, 49.987m west of a culvert, which appears to have occupied the same location since it was noted in 1925 by the Cass County Surveyor. Those surveyors had perpetuated the location of the original General Land Office (G.L.O.) corner, by finding the original bearing trees.



Statement of evidence relative to this corner location is on the back of this page

I hereby certify that this survey, plan, or report was prepared by me or under my direct supervision and that I am a duly Licensed Land Surveyor under the laws of the State of Minnesota.

LaVerne Leuelling 5-30-1999
 LaVerne Leuelling Date
 Licensed Land Surveyor No. 16089
 NORTHERN LIGHTS SURVEYING & MAPPING, INC.

OFFICE OF THE COUNTY RECORDER 413415
 County of Cass

I hereby certify that this document was filed in the Recorder's office.

Time: 9:50 A.M. Date: 6-3-99
 Recorder Claudine Kaylor
 By K.F. Deputy
 DOCUMENT NO. 413415

Statement of Evidence

Northeast Corner, Section 21, Township 143 North, Range 27 West, of the Fifth Principal Meridian, Cass County, Minnesota.

September, 1873; General Land Office (G.L.O.) survey notes; Deputy Surveyor William Allen set a wooden post for the section corner and referenced it with the following:

12" (0.305m) Birch	8" (0.203m) Maple	6" (0.152m) Birch	10" (0.254m) Maple
S37°E	N33°W	S58°W	N53°E
19 Links (3.822m)	26 Links (5.230m)	13 Links (2.615m)	11 Links (2.213m)

Swamp edge east 4 chains; swamp edge south 4 chains

Said records are on file with the Secretary of State, St. Paul, Minnesota; copies of these records are on file with the Cass County Surveyor's Office, Walker, Minnesota.

1910-1915; Cass County Road Survey by George Ralph; Book "B", p. 97, Survey Record #280; he found the following G.L.O. bearing trees:

Birch (no diameter)	Maple Stump
S39°30'E	N31°30'W
11 Feet (3.353m)	17 Feet (5.182m)

He established the following new references:

		6" (0.152m) Balsam Fir
		N32°30'E
		50.9 Feet (15.514m)
8" (0.203m) Balsam Fir	12" (0.305m) Balsam Fir (sic)	12" (0.305m) Balsam Fir
S6°W	S38°30'W	N15°30'E
41 Feet (12.497m)	59 Feet (17.983m)	51.4 Feet (15.667m)

1925; Cass County Land Corner Record; during a survey for State Road #4, Cass County Highway Department found the original corner and the following references:

12" (0.305m) Balsam Stump	12" (0.305m) Balsam Stump
Northeast	Southeast
51.4 Feet (15.667m)	59.0 Feet (17.983m)

They also noted that a culvert lay 164 feet (49.987m) east of the corner and that another lay 512 feet (156.058m) west of the corner.

November 14, 1969; United States Department of Agriculture - Forest Service (U.S.D.A.-F.S.) T.143N. R.27W. Field Book #1, p.42; William Okerman searched for the corner using Cass County survey notes, but did not find it. The area was badly burned and destroyed by utility and road construction.

November, 1998; Northern Lights Surveying and Mapping, Inc. set a 0.015m diameter galvanized steel pipe, 0.610m long, for the quarter corner. They set it in the centerline of the highway and 49.987m west of a found culvert.

0.208m Norway Pine	0.244m Norway Pine	0.134m Oak	0.176m Basswood
S32°W	S19°E	N40°W	N14°E
28.134m to 20d nail	24.324m to 20d nail	11.318m to 20d nail	15.248m to 20d nail
in west face	in west face	in east face	in west face
up 0.654m	up 0.612m	up 0.486m	up 0.452m
Steel Signpost	Swamp Edge	Swamp Edge	
North	East 3.8 chains (76m)	South 3.8 chains (76m)	
6.388m			
Sign 54-9			

Northern Lights Surveying and Mapping, Inc. Boy River Township Field Book #2, p. 26.

State Plane Coordinate System
Minnesota Central Zone
NAD 83

Coordinates:

Cass County North

Northing = 344072.170 meters
Easting = 811798.022 meters

Northing = 74082.583 meters
Easting = 161672.588 meters

Latitude = 47°11'44.63548" North
Longitude = 94°05'39.52695" West