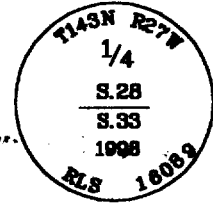


**CERTIFICATE OF LOCATION OF GOVERNMENT CORNER**

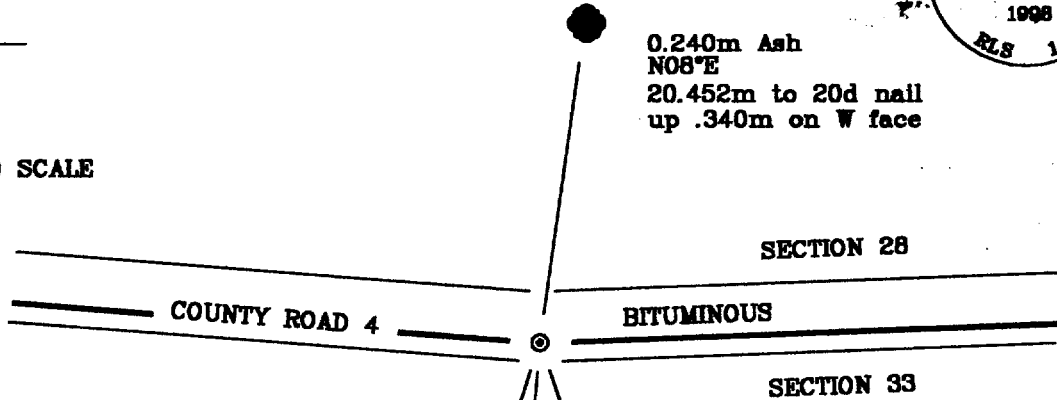
North Quarter Corner, Section 33, Township 143 North, Range 27 West, of the Fifth Principal Meridian, Cass County, Minnesota.

November 23, 1998; Northern Lights Surveying and Mapping, Inc., (NLSM) set a galvanized steel monument below the bituminous 6.5 feet south of centerline in County Road #4. The monument was set to perpetuate the position of the General Land Office corner found in 1915 by Cass County & utilized by J.A. Gjelhaug in 1937.

**SKETCH OF REFERENCE TIES & EVIDENCE  
T.143N., R.27W.**



NOT TO SCALE



Steel Sign Post  
S05°W  
15.302m  
F.S sign 54-9

0.240m Ash  
N08°E  
20.452m to 20d nail  
up .340m on W face

0.140m Ash  
S19°E  
20.234m to 20d nail  
up .744m on W face

\* 0.186m Cedar  
S18°W  
45.942m to 20d nail  
up .450m on E face

Bearings are Grid  
North, Minnesota  
Central Zone, measured  
with a hand compass  
adjusted to 3° East  
declination.

New bearing trees were  
blazed, scribed & painted  
red. A tag stating the  
bearing & distance was  
affixed to the tree. A  
was measured from the  
monument to the nail.  
nail was placed in the base  
of the tree and the distance

Statement of evidence relative to this corner location is on the back of this page

I hereby certify that this survey, plan, or report was prepared by me or under my direct supervision and that I am a duly Licensed Land Surveyor under the laws of the State of Minnesota.

*LaVerne Leuelling* 5-13-99  
LaVerne Leuelling Date

Licensed Land Surveyor No. 18089  
NORTHERN LIGHTS SURVEYING & MAPPING, INC.

OFFICE OF THE COUNTY RECORDER 412859  
County of Cass

I hereby certify that this document was filed in the Recorder's office.

Time: 12:30 P.M. Date: May 17, 1999

Recorder Claudine Kaylor

By K.J. Deputy

DOCUMENT NO. 412859

## Statement of Evidence

Page 2 of 3

North Quarter Corner, Section 33, Township 143 North, Range 27 West, of the Fifth Principal Meridian, Cass County, Minnesota.

September, 1873; General Land Office (G.L.O.) survey notes; Deputy Surveyor William Allen set a wooden post and referenced it with the following:

10" (0.254m) Cedar	15" (0.381m) Cedar
S11°W	N68°W
8 Links (1.609m)	10 Links (2.012m)

Said records are on file with the Secretary of State, St. Paul, Minnesota. Copies of these records are on file with the Cass County Surveyor's Office, Walker, Minnesota.

November, 1912; Cass County Survey Record #221, Book "A", pp. 542,543; Harry Todd found both original bearing trees down and plainly marked. He set a new stake and marked the following:

10" (0.254m) Tamrack	10" (0.254m) Tamrack
Stump	Stump
N61°45'W	N6°28'W
45.60 Feet (13.900m)	52.90 Feet (16.124m)

He showed a distance of 2661 feet (811.074m) between the southwest corner and south quarter corners of Section 28.

February, 1915; Cass County Survey Record No. 328, Book "B" pp. 456-462; Cass County Surveyor John Curo and Deputy Surveyor F. Donner, during a survey to lay out County Highway #4, found Todd's 1912 stake, buried in ice and snow by the construction of a corduroy road. The most westerly bearing tree had been pulled up during the road construction, but the other was intact and plainly marked. They set a temporary cedar post in the center of the east/west corduroy road, with the intention of returning after the thaw and replacing it with an iron pipe. They indicated a distance of 2648 feet to the northeast corner of section 33.

1937: J.A. Gjelhaug, RLS #1337 while laying out the position of the Boy River lookout tower, indicated a monument of some sort for the N1/4 of section 33 near the center of Rt. #4 and near a 3°15'± point of inflection in the road. He showed the distance east to the NE 33 as 40.31 chains (2660.46 feet) and showed it west to the NW 33 as 40.32 chains (2661.12 feet).

1969; United States Department of Agriculture-Forest Service T.143N. R27W. Field book #1, p. 54; Curt Krause chained to the area from the section corner to the west, but found no evidence.

November 23, 1998; Northern Lights Surveying and Mapping, Inc., crew of Heinle and Brunner visited the quarter corner area, and set a monument 6.5' south of centerline in County Road #4. They set a brass capped 0.015m diameter galvanized steel pipe, 0.610m long, for the corner, and established the following references:

0.186m Cedar	0.140m Ash	0.240m Ash	Standard Sign Post
S18°W	S19°E	N08°E	S05°W
45.942m to 20d nail	20.234m to 20d nail	20.452m to 20d nail	15.302m
up .450m on E face	up .744m on W face	up .340m on W face	F.S sign 54-9

Also set PK's in road at: 3.70' East and 5.75' North

The monumented corner was 811.111 meters (2661.12 feet) from the NW 33 & 808.109 meters (2651.11 feet) to the NE 33.

Northern Lights Surveying and Mapping, Inc., Boy River Township Field Book #3, p. 76.

## Coordinates:

State Plane Coordinate System  
Minnesota Central Zone  
NAD 83

## Cass County North

Northing = 70855.715 meters  
Easting = 160887.965 meters

Northing = 340,845.086 meters  
Easting = 811,014.740 meters

Latitude = 47°10'00.1891" North  
Longitude = 94°08'17.01839" West